

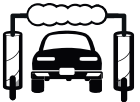
CAB SPOILER

INSTALLATION MANUAL



PART NUMBER: T591361

BEFORE INSTALLING



WASH & CLEAN PROPERLY



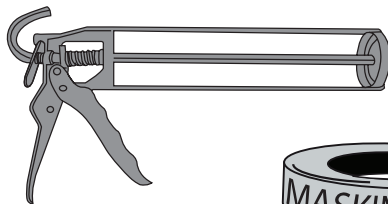
WE RECOMMEND 2 PERSONS FOR INSTALLATION

AFTER INSTALLING



DO NOT WASH IN 48 HRS

TOOLS



CHECK LIST

***ALREADY INSTALLED ON THE PART**

ITEM	DESCRIPTION	DRAWING	AMOUNT
A	*VHB TAPE		N/A
B	POLYURETHANE ADHESIVE 310 ml		1 PC

CAB SPOILER

PART NUMBER: T591361



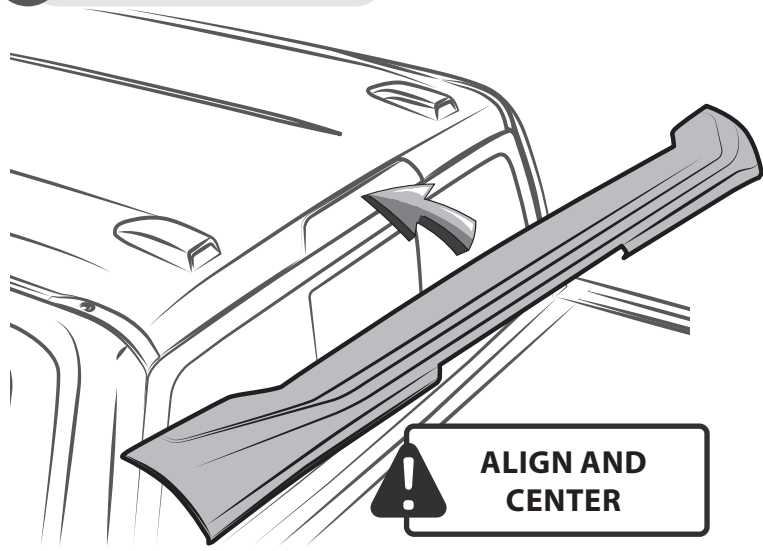
THE IDEAL TEMPERATURE RANGE OF THE PART AND THE VEHICLE WHEN INSTALLING MUST BE 16°C (60°F) TO 40°C (104°F), THIS GUARANTEES A CORRECT ASSEMBLY.

1 CLEAN



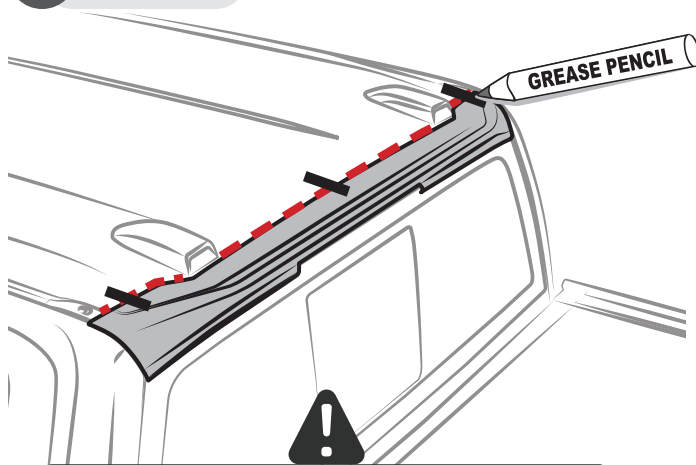
REMOVE ANY RINSE AID OR GLOSS ENHANCERS RESIDUE

2 TEST FIT THE PART



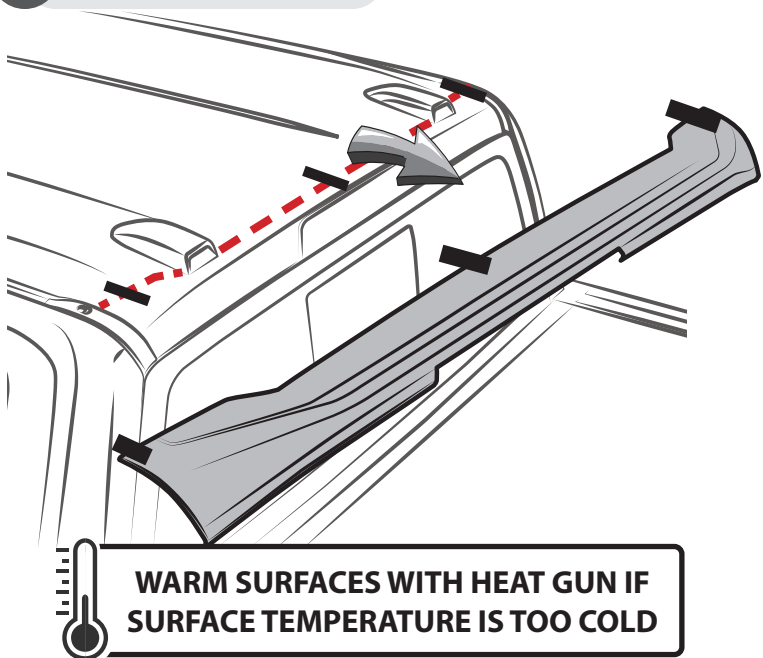
ALIGN AND CENTER

3 MARK



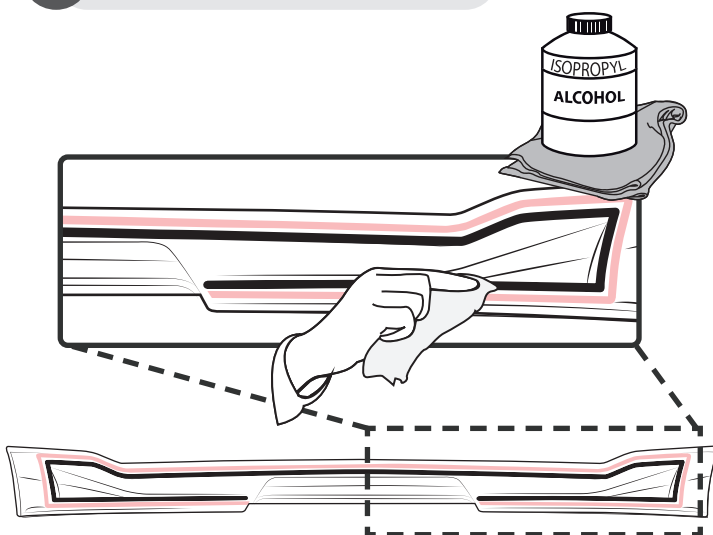
DRAW CENTER HASH MARK WITH GREASE PENCIL ON CAB SPOILER AND SHEET METAL. THIS WILL ENSURE FENDER FLARE WILL BE CENTERED TO GREASE PENCIL OUTLINE.

4 REMOVE THE PART



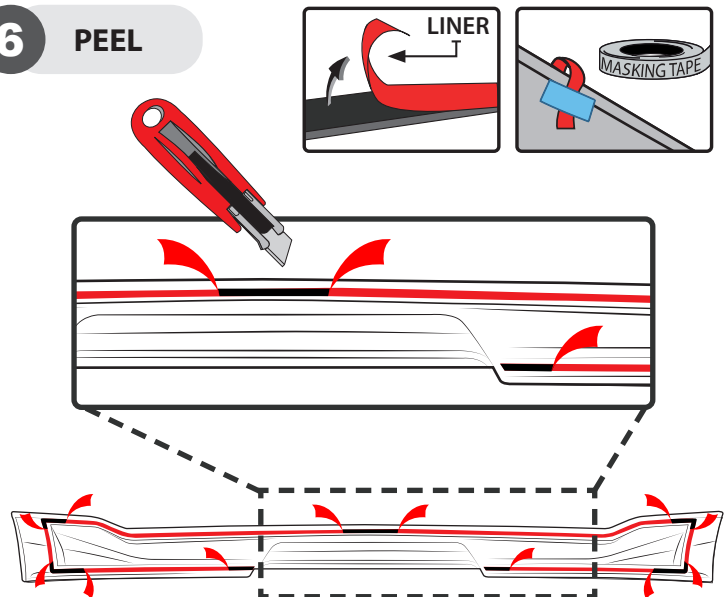
WARM SURFACES WITH HEAT GUN IF SURFACE TEMPERATURE IS TOO COLD

5 CLEAN INNER CHANNEL



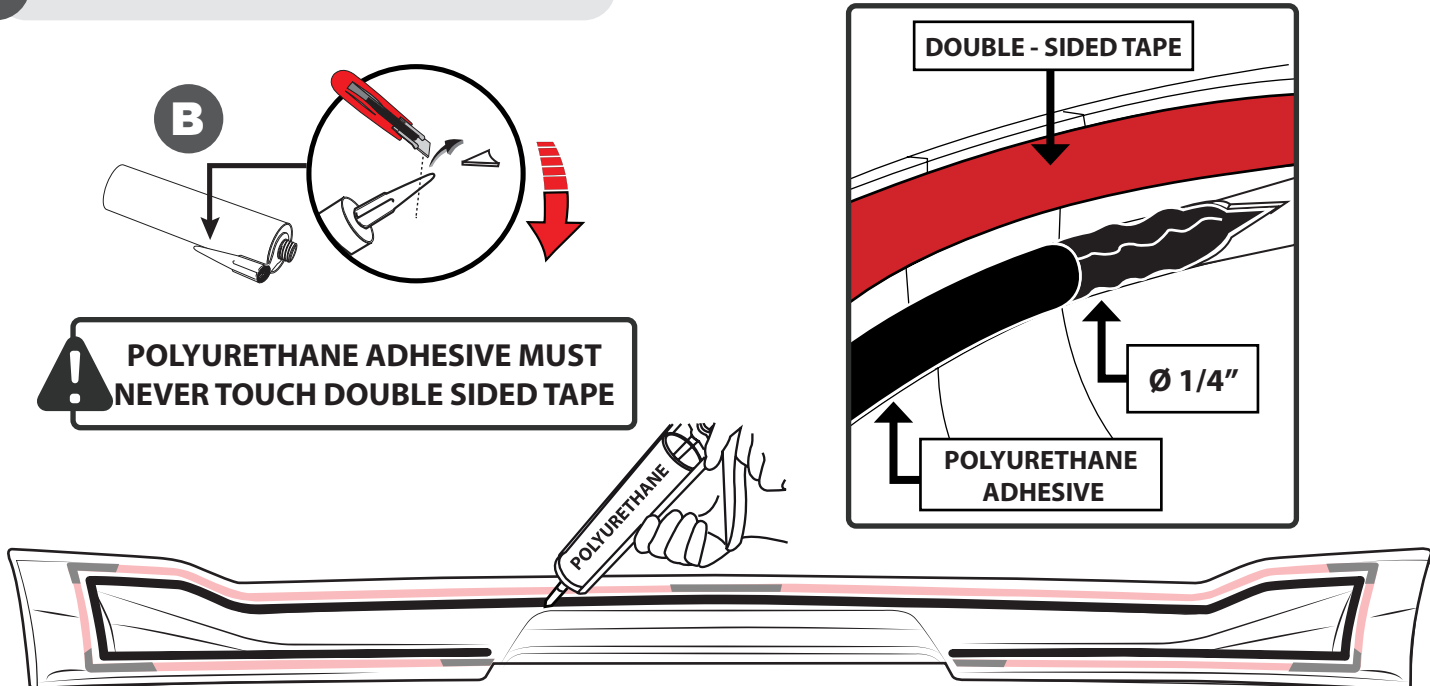
CLEAN THOROUGHLY TO ENSURE PROPER ADHESION

6 PEEL

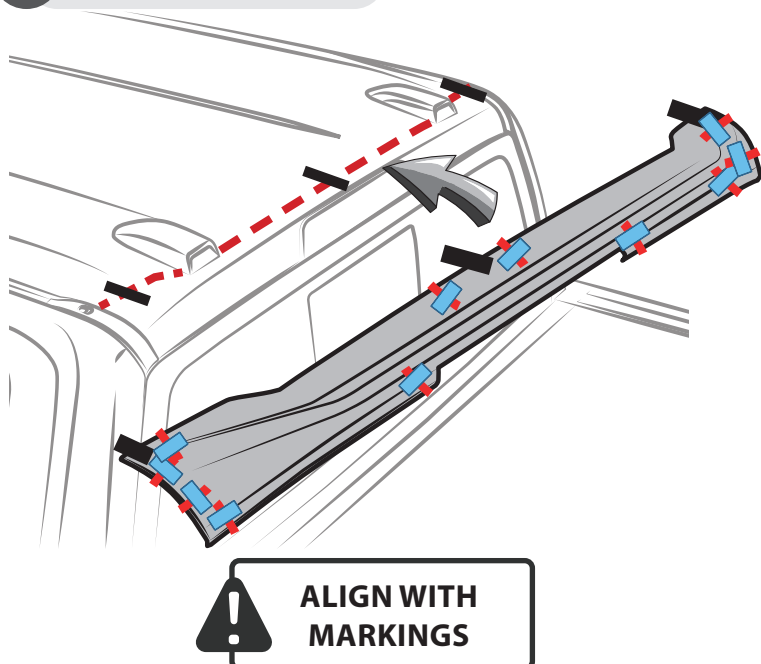


STICK THE LINER LEAD ON THE OUTSIDE OF THE PART

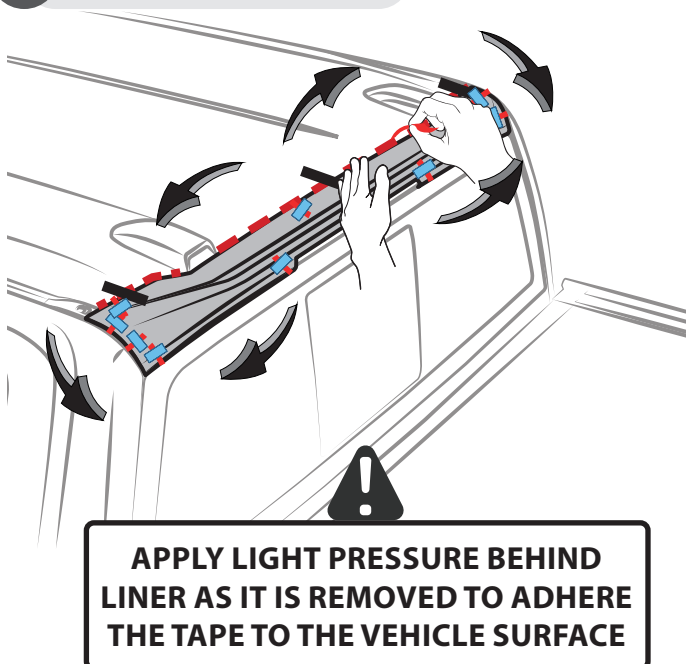
7 APPLY POLYURETHANE ADHESIVE



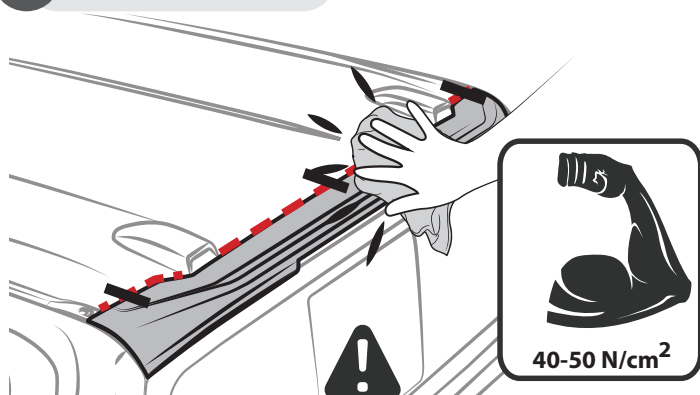
8 PLACE THE PART



9 REMOVE THE LINER



10 PRESS FIRMLY



11 CLEAN OFF GREASE PENCIL MARK



DURING APPLICATION, THE VEHICLE, ADD ON PARTS AND TAPE MUST BE AT OR ABOVE 16 °C OR 60 °F. A FULL SURFACE CONTACT BETWEEN TAPE AND SUBSTRATE IS IMPORTANT FOR GOOD ADHESION PERFORMANCE. CONTACT IS ACHIEVED BY APPLYING PRESSURE. IN PRACTICE, A PRESSURE BETWEEN 40 AND 50 N/cm² IS USUALLY NEEDED.

INSTALLED PART

