



CATALYTIC CONVERTER GUARD SKID PLATE

(2015-2023 F-150 - EXCLUDING RAPTOR & POWERBOOST)

INSTALLATION INSTRUCTIONS

CONTENTS

- (1) Skid Plate
- (2) M10 x 1.50 x 50mm Security Torx Bolts
- (2) M10 x 1.50 x 40mm Security Torx Bolts
- (4) M10 Lock Washers
- (4) M10 Flat Washers
- (4) M10 Nut Plates
- (4) Spacers

TOOLS REQUIRED

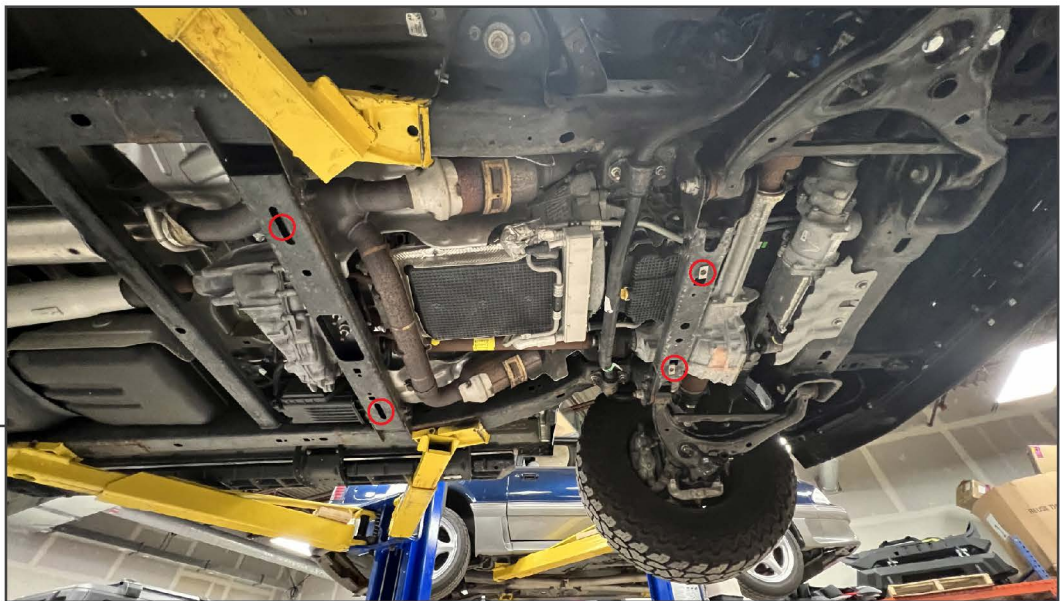
- T-45 Security Torx Bit
(Provided)
- Bit Driver
- 15mm Socket
- Ratchet
- Floor Jack
- Jack Stands

SKU # T595035

STEP 1

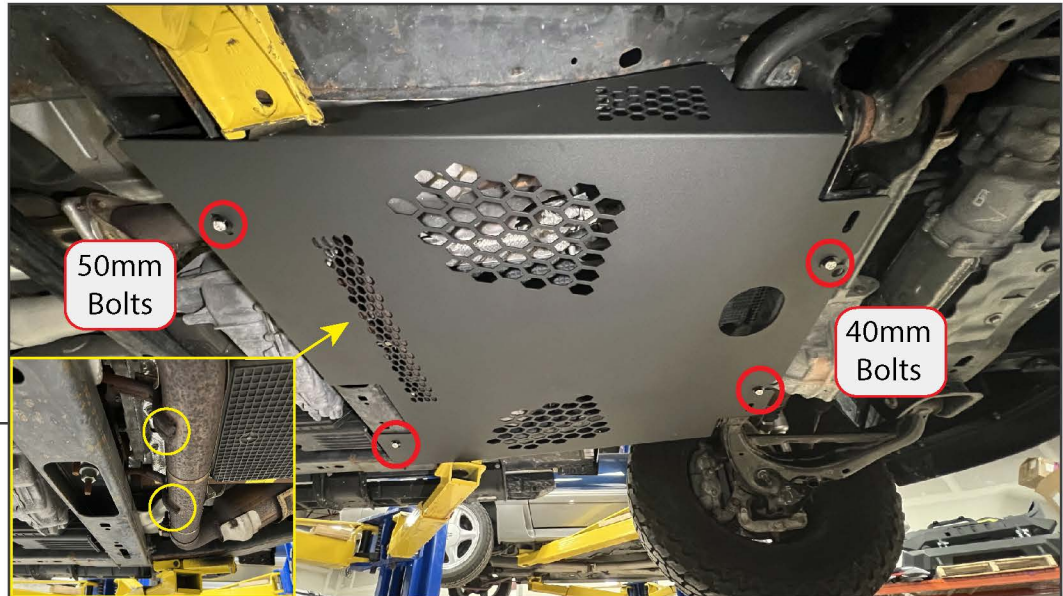
Safely lift and support the front of the vehicle.

If equipped, remove the (2) front 15mm bolts from the front of the vehicle frame. Allow the threaded inserts to remain in place if equipped.

STEP 2

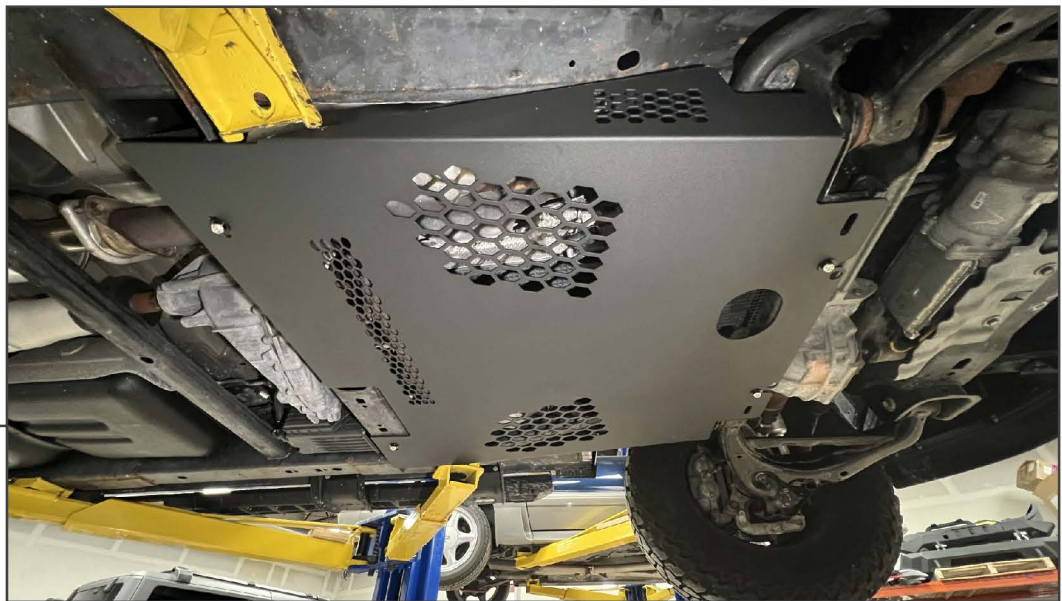
Locate the holes in the frame under the transfer case. Place (1) M10 nut plate into each frame hole.

If the vehicle did not come with the front (2) 15mm bolts, install (1) nut plate into each bolt hole.

STEP 3

With assistance, lift the skid plate to the vehicle frame. Fit (1) spacer between the skid plate and the vehicle frame at each bolt hole location. Loosely secure the skid plate to the vehicle using the included (4) M10 Torx bolts, lock washers, and flat washers. See diagram above for bolt locations.

Note: On some vehicles, the exhaust hangers may be welded low and may interfere with the skid plate. Use a grinder to remove some material from the hangers for clearance, if necessary.

STEP 4

Adjust the skid plate as necessary for a symmetrical fit to the vehicle frame.

Secure the skid plate by tightening all hardware evenly until secure.

Installation is now complete.