



BAJA GRILLE WITH LED DRL AND TURN SIGNALS

(2004-2008 F-150)

INSTALLATION INSTRUCTIONS

CONTENTS

- (1) Grille Assembly
- (1) LH Grille Mounting Bracket
- (1) RH Grille Mounting Bracket
- (1) DRL Wiring Harness
- (1) Turn Signal Harness
- (6) Scotchlok Connectors
- (12) Cable Ties
- (8) Phillips Screws
- (8) Flat Washers
- (6) M6 Flange Nuts

TOOLS REQUIRED

- 10mm Socket/Wrench
- Ratchet
- Phillips Screwdriver
- Pry Bar
- Wire Strippers/Pliers

SKU # T600196
Edited: 04/05/2023

STEP 1



Open the vehicle hood. Remove (6) 10mm nuts connecting the front edge of the hood to the grille.

STEP 2



Remove (4) 10mm bolts connecting the grille assembly/brackets to the bottom of the hood. With the hardware removed, gently lower the vehicle hood to remove the grille from the vehicle.

Place the hood on a soft surface to remove the vehicle emblem.

STEP 3



The grille emblem is double sided taped to the vehicle with posts fitted through the grille. Using a plastic pry tool, relieve tension from the posts while pulling/prying the emblem from the grille.

STEP 4



Fit the grille emblem into the new grille cutout. Press firmly to engage the double sided tape and the rear post mounts.

Note: Re-applying double sided tape to the emblem is recommended to encourage proper adhesion.



STEP 5

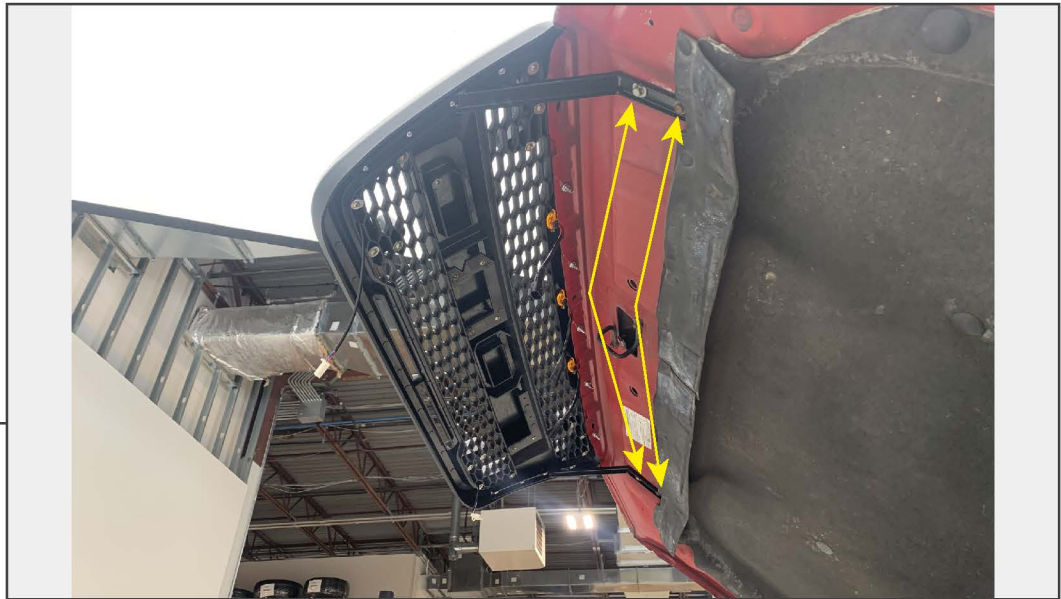
Place the new grille on a soft workable surface for assembly. Secure the LH and RH mounting brackets to the new grille using (3) Phillips screws and (3) flat washers per bracket.



STEP 6

Align the grille to the vehicle, and secure the grille to the front of the hood using (6) M6 flange nuts.

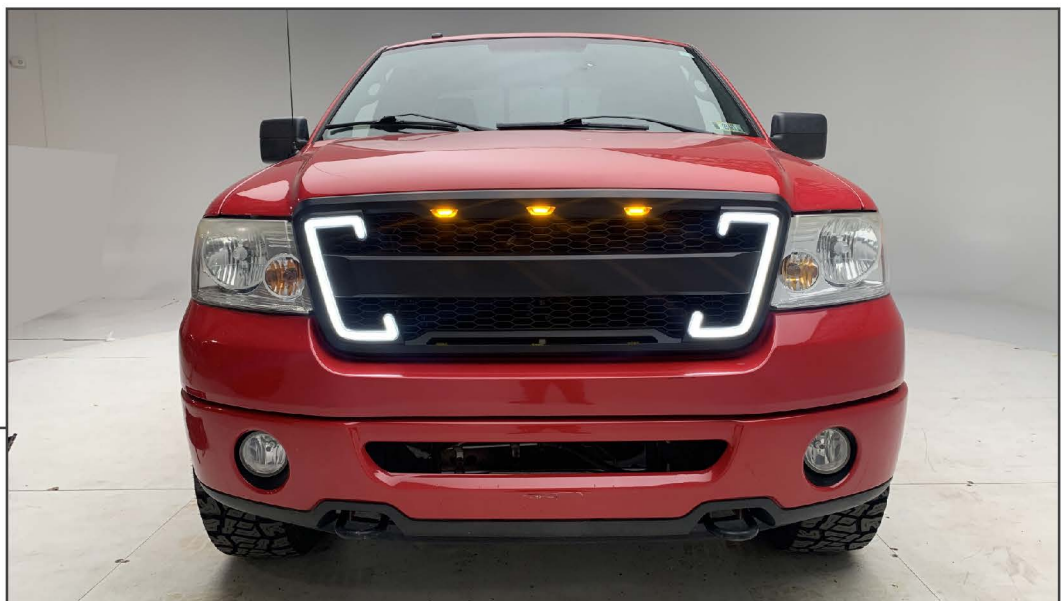
STEP 7



Secure the grille to the bottom of the hood using the original (4) 10mm bolts.

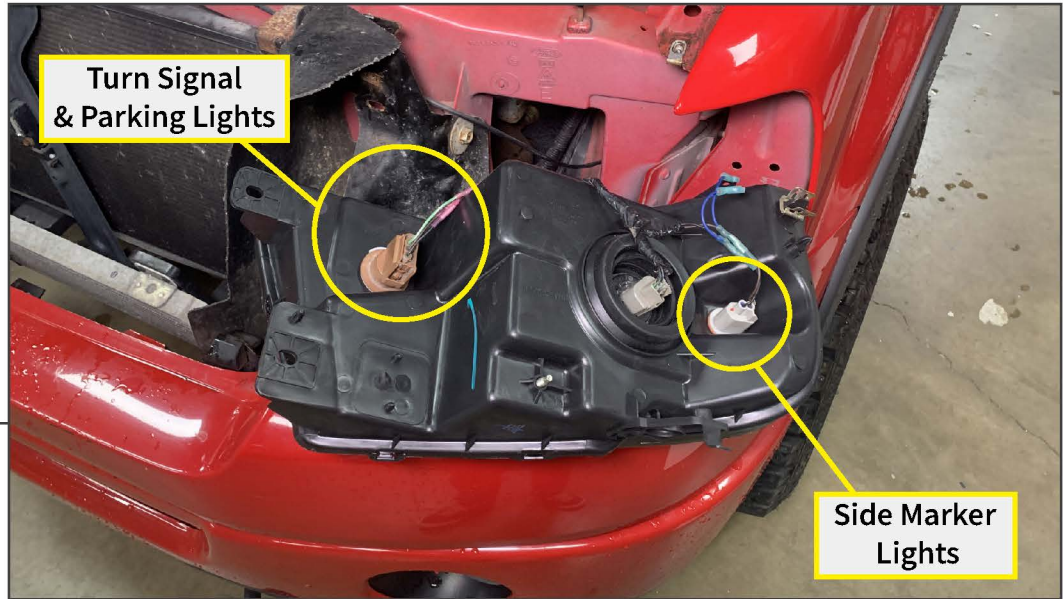
If necessary, the grille can be adjusted by loosening the grille bracket Phillips screws and the upper M6 flange nuts.

STEP 8



Remove the vehicle headlights by removing (3) 10mm bolts. Splice the DRL and turn signal lights to the vehicle headlight wiring using the diagram on Step 9.

Installation is now complete.



STEP 9

Remove the vehicle headlights by removing (3) 10mm bolts per light housing. Splice the DRL and turn signal lights to the vehicle headlight wiring following the diagram below.

Amber Center Grille Lights	-	Vehicle Wiring Harness
Red (+)	-	Brown (+) [Side Marker Lights]
Black (-)	-	Black (-) [Side Marker Lights]
Side DRL/Turn Signal Bar Lights	-	Vehicle Wiring Harness
LH Yellow (+)	-	Light Blue/White (LH Turn Signal +)
RH Yellow (+)	-	Light Green/White (RH Turn Signal +)
Red (+)	-	Brown (Parking Light +)
Black (-)	-	Black (Parking Light -)