



FORMED HD RUNNING BOARDS

(2015-2024+ F-150 SUPERCREW CAB)

(2017-2024+ F-250/F-350 SUPERCREW CAB)

INSTALLATION INSTRUCTIONS

CONTENTS

- (1) LH Running Board
- (1) RH Running Board
- (6) Stud Brackets
- (1) LH Front Bracket [DF]
- (1) LH Center Bracket [DC]
- (1) LH Rear Bracket [DR]
- (1) RH Front Bracket [PF]
- (1) RH Center Bracket [PC]
- (1) RH Rear Bracket [PR]
- (18) Plastic Retainers
- (12) M8x1.25 x 25mm Combo Bolts
- (24) M8x1.25 Lock Nuts
- (24) M8 Flat Washers

TOOLS REQUIRED

13mm Socket/Wrench
Ratchet

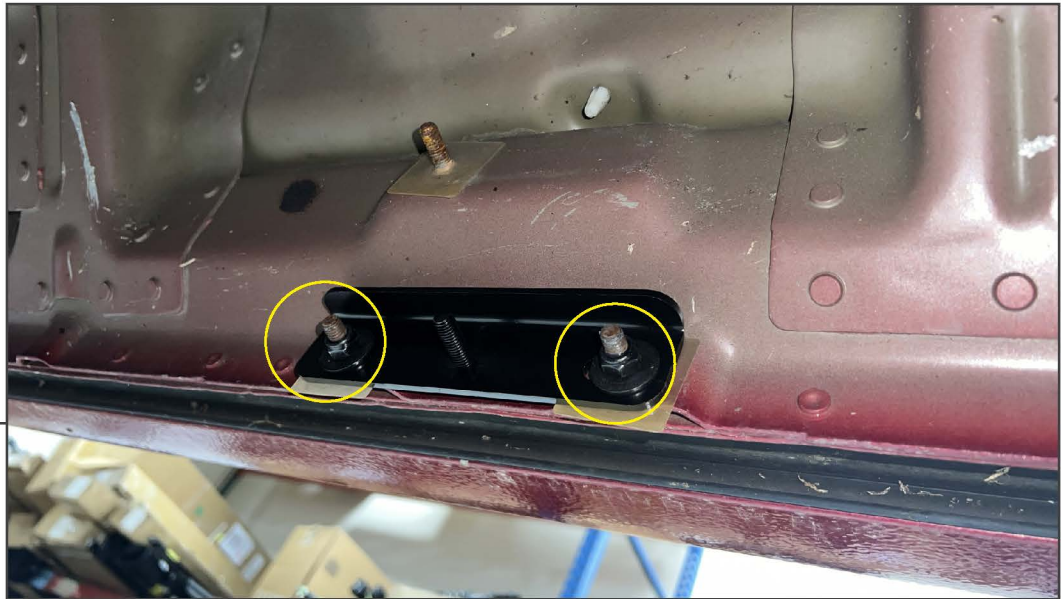
SKU # T604412
Edited: 08/19/2024

STEP 1

Identify the running board mounting brackets using the diagram above. The front mounting brackets are different from the center/rear brackets.

STEP 2

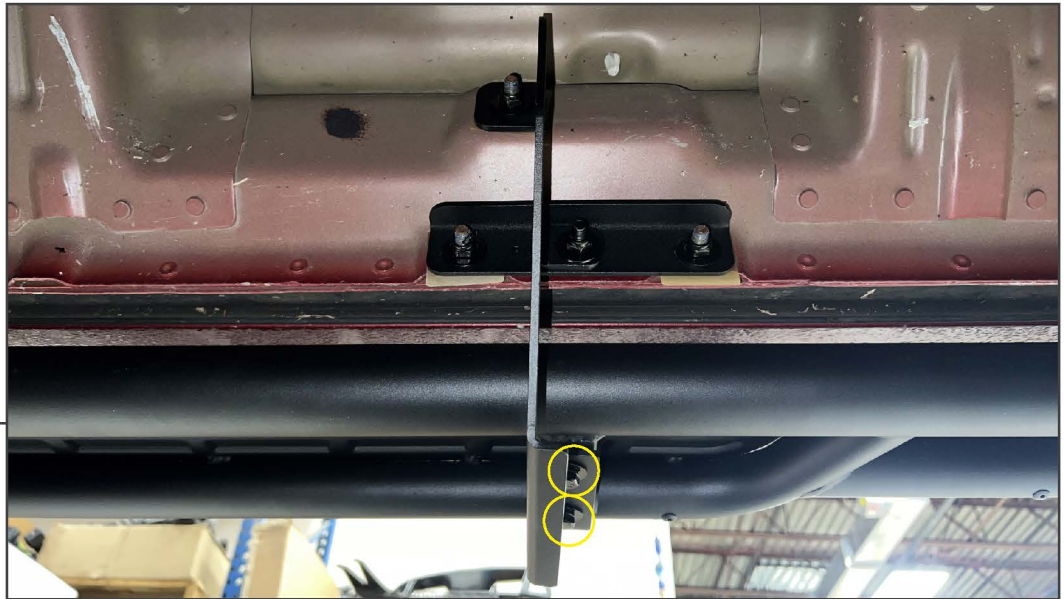
Locate the vehicle rocker panel studs. Install (1) plastic stud retainer to each rocker panel stud.

STEP 3

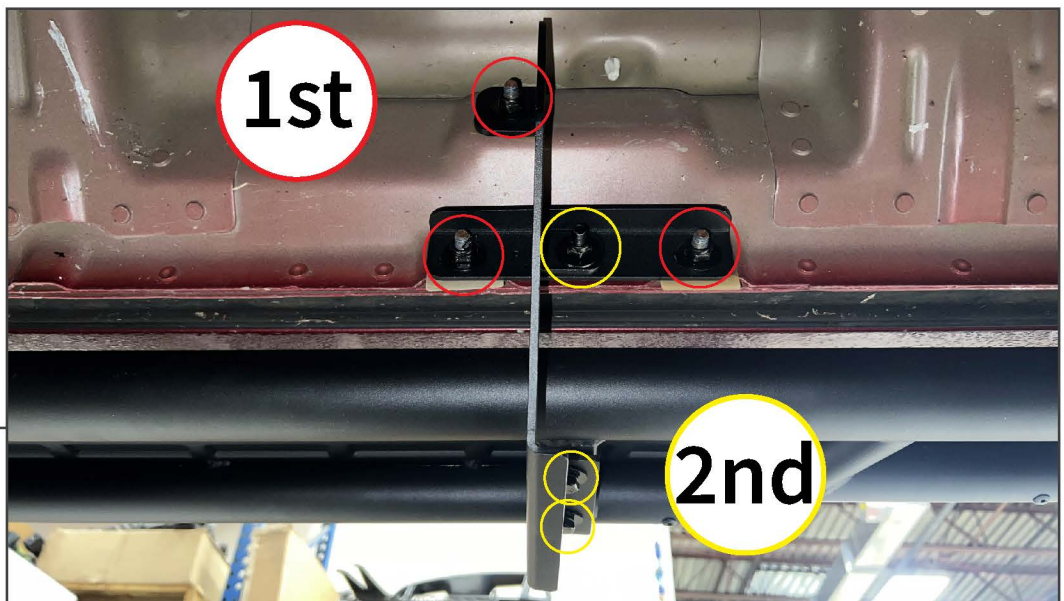
Place (3) plastic retainers onto the vehicle rocker panel studs. Loosely install the appropriate stud plates to the inner rocker panel studs using (2) M8 flat washers and (2) M8 lock nuts per stud plate.

STEP 4

Loosely install the appropriate outer mounting brackets to the inner rocker panel studs using (2) M8 flat washers and (2) M8 lock nuts per mounting bracket plate.

STEP 5

With a helper, lift the drop side step to the mounting brackets. Adjust, then loosely secure the drop side step to the brackets using (6) M8 x 25mm combo bolts.

STEP 6

Once adjusted, tighten all drop side step mounting hardware using the diagram above.



STEP 7

Repeat steps 1-6 for the remaining side step.

Installation is now complete.