



BED CORNER STEP

(2021-2023+ F-150)

(EXCLUDING RAPTOR AND OEM DUAL EXHAUST MODELS)

INSTALLATION INSTRUCTIONS

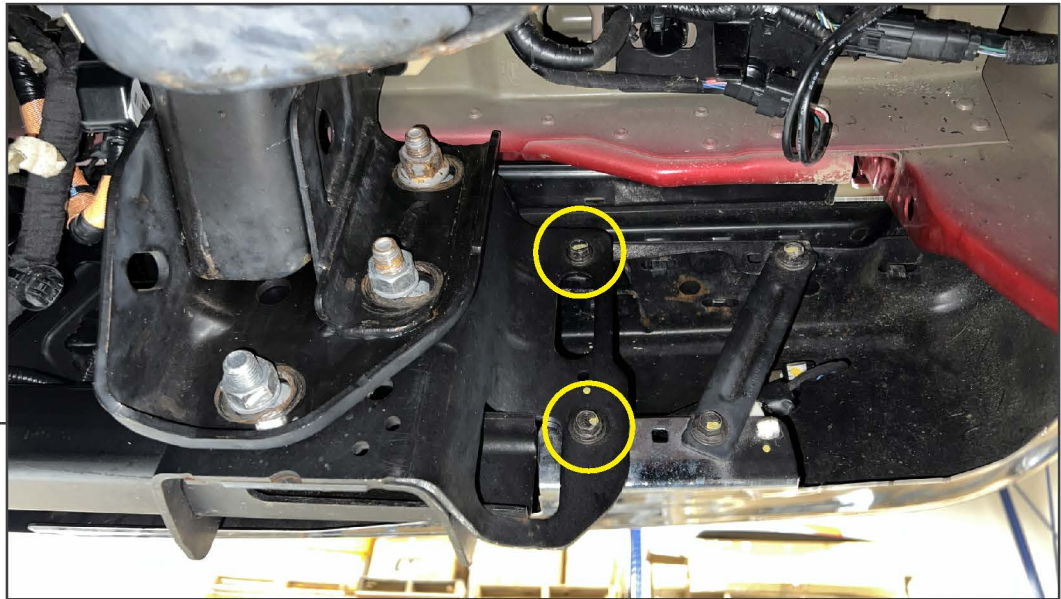
CONTENTS

- (1) Rear Bumper Mounting Bracket
- (1) Frame Mounting Bracket
- (1) Bed Step Hinge Assembly
- (1) Step Pad
- (4) M8x1.25 x 20mm T-Studs
- (4) M8x1.25 x 25mm Combo Bolts
- (2) M8x1.25 x 30mm Bolts
- (1) M8x1.25 x 20mm Bolt
- (3) M8 Lock Washers
- (7) M8 Flat Washers
- (4) M8 Lock Nuts

TOOLS REQUIRED

- 13mm Socket/Wrench
- 21mm Socket/Wrench
- Ratchet

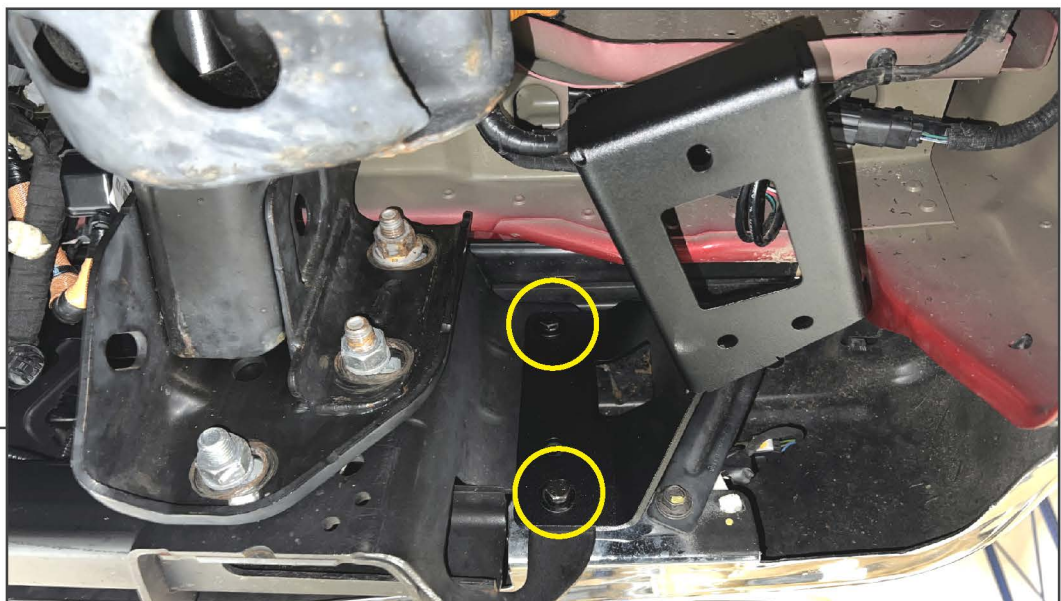
SKU # T615680

STEP 1

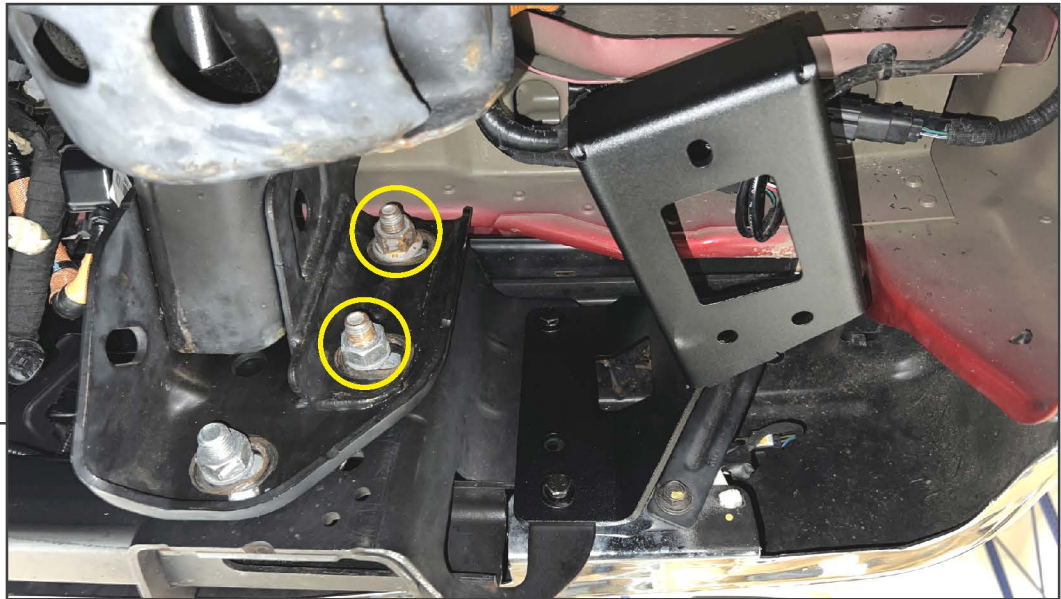
The bed corner step can only be installed on the LH (Driver's) side of the vehicle.

From under the vehicle, loosen and remove (2) 13mm bolts from the vehicle rear bumper.

Note: The (2) 13mm bolts will not be reused.

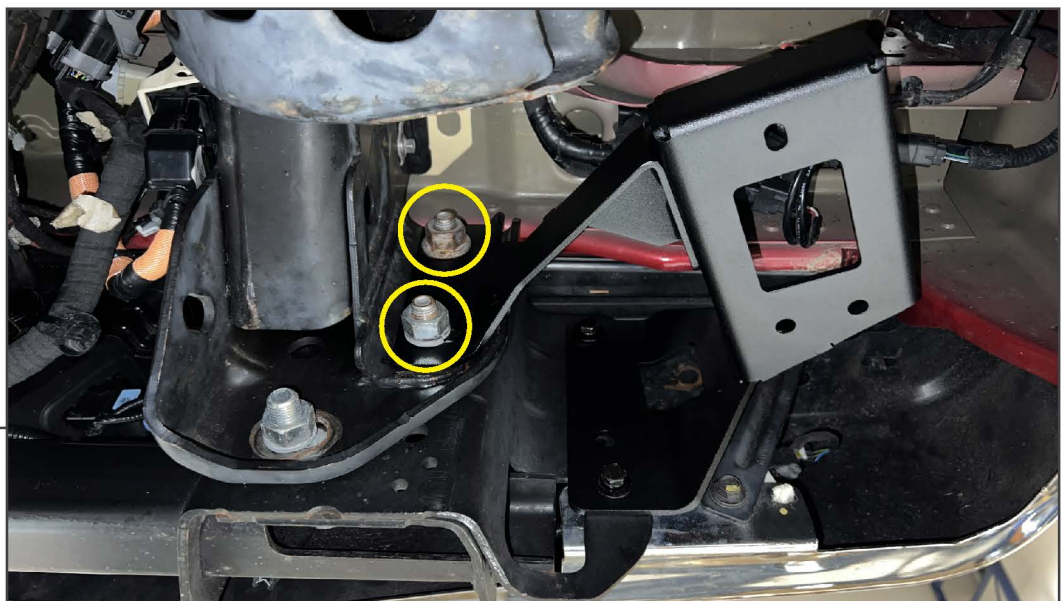
STEP 2

Fit the bumper mounting bracket to the vehicle bumper, and loosely secure into place using the provided (2) M8 x 30mm bolts, (2) M8 lock washers, and (2) M8 flat washers.

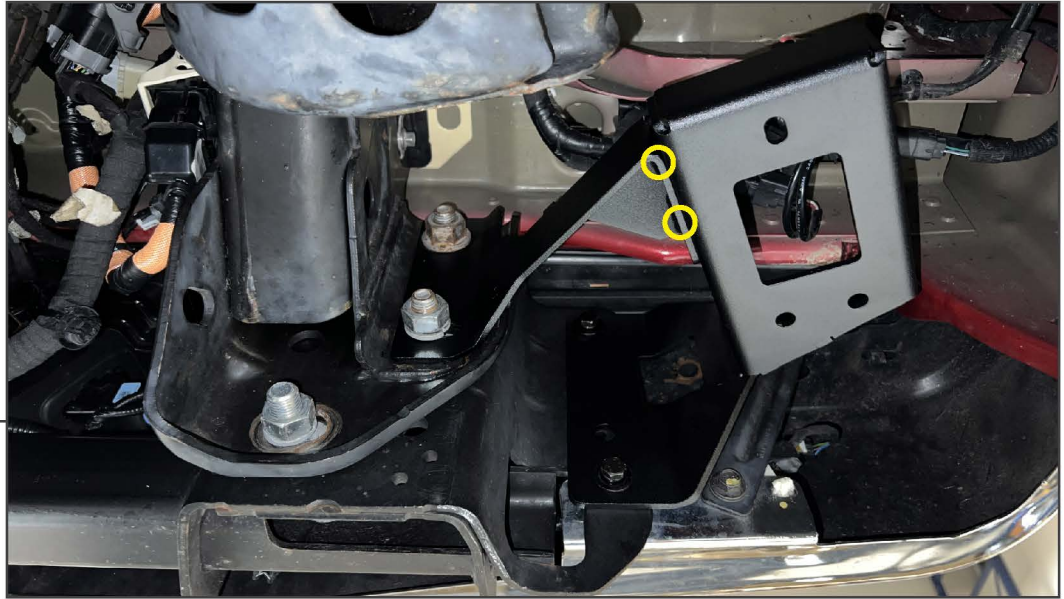
**STEP 3**

Loosen and remove the (2) 21mm nuts securing the bumper to the frame.

Note: The (2) 21mm nuts will be reused.

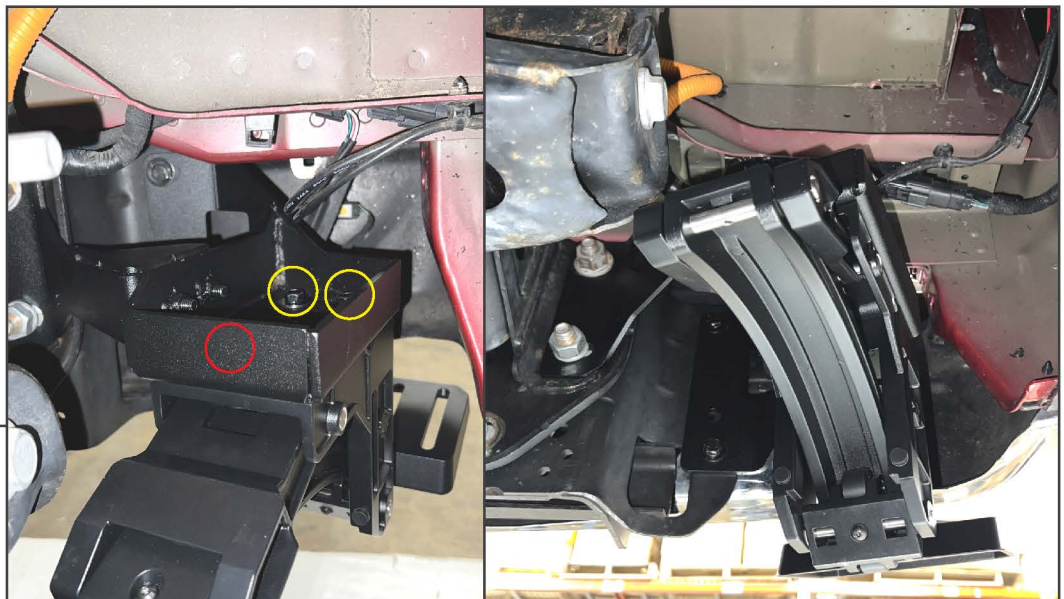
**STEP 4**

Fit the frame bracket to the vehicle frame over the bumper mounting studs, and loosely secure into place using the original (2) 21mm nuts.

STEP 5

Secure the bumper and frame mounting brackets together using (2) M8 combo bolts.

With the brackets secure, tighten the brackets to the frame/bumper until secure.

STEP 6

Fit the step hinge assembly to the bracket assembly using (1) M8 x 20mm bolt, (1) M8 lock washer, and (1) M8 flat washer into the front-most bolt hole. Then, secure the step hinge assembly bracket assembly using (2) M8 x 25mm combo bolts through the rear-most holes.

With all bolts started, tighten all hardware evenly until the hinge assembly is secure.

STEP 7

Slide (2) T-Studs into each row on the bottom of the step pad. Then, position the studs through the step hinge assembly pad. Secure the step pad to the hinge assembly using (4) M8 flat washers and (4) M8 lock nuts. Tighten evenly until secure.

STEP 8

Use your foot to raise and lower the step as needed.

Installation is now complete.