



V2 ALUMINUM HARD ROLL-UP TONNEAU COVER

INSTALLATION INSTRUCTIONS

CONTENTS

- (1) Tonneau Cover
- (1) LH Side Rail
- (1) RH Side Rail
- (4) Side Rail Clamps
- (2) Drain Tubes
- (1) Bulkhead Seal
- (2) Tonneau Straps
- (4) M8 Bolts
- (4) M8 Lock Washers
- (4) M8 Flat Washers
- (4) M8 Wing Nuts
- (1) Allen Key
- (1) Wrench

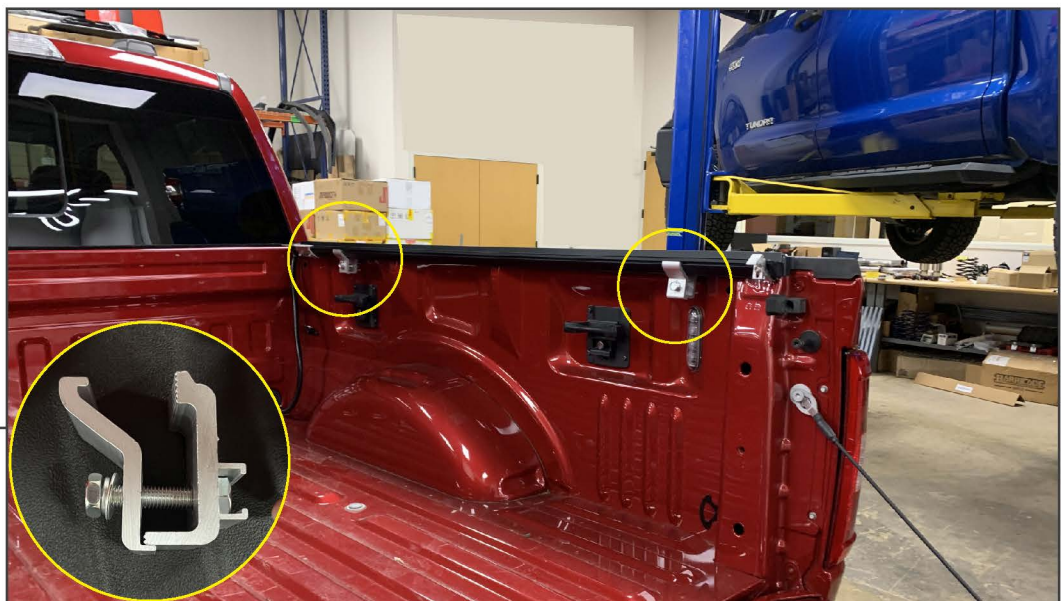
TOOLS REQUIRED

- 17mm Wrench (Provided)
- Allen Key (Provided)
- Isopropyl Alcohol
- Microfiber Cloth



STEP 1

Clean the vehicle bulkhead using isopropyl alcohol and a microfiber cloth, allow to dry. Then, adhere the bulkhead gasket to the vehicle bulkhead.



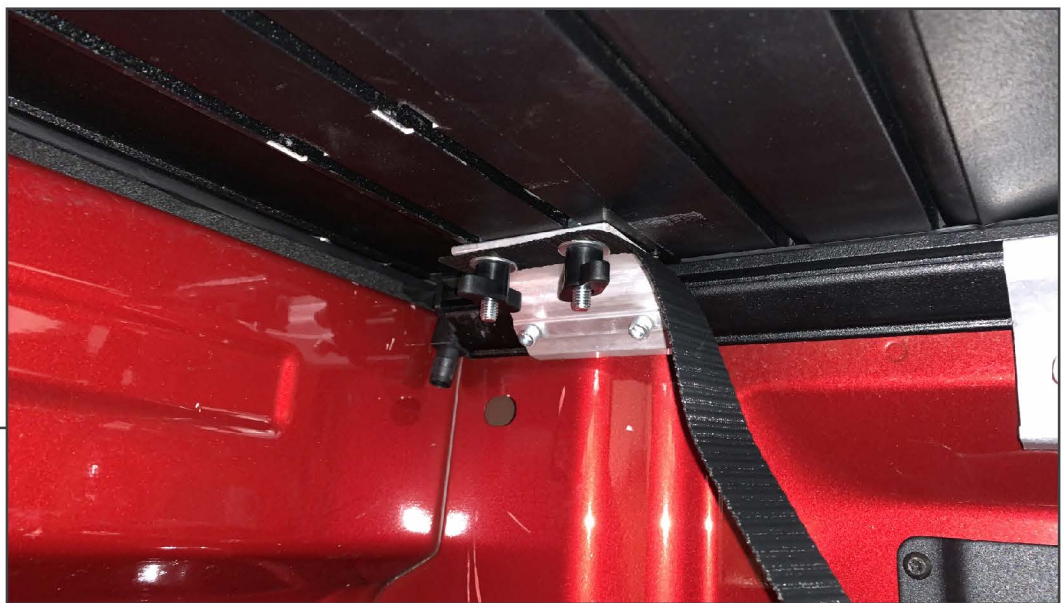
STEP 2

Fit the side rails to the vehicle, and secure into place using (2) clamps per side rail. Ensure to evenly space the clamps along the bed rail.



STEP 3

Fit the head of (4) M8 bolts into the front of the tonneau cover. Slide (2) bolts to the driver's side and (2) bolts to the passenger's side.



STEP 4

Fit the bolts through the side rail mounting bracket holes. Fit (1) tonneau strap onto the bolts, following with (2) M8 flat washers, (2) M8 lock washers, and (2) M8 wing nuts. Evenly tighten the wing nuts until the tonneau cover is secure to the side rails.



STEP 5



Fit (1) drain tube into the side rail fitting. Route the drain tube towards the vehicle bed grommet. Carefully cut a slot in the grommet to route the drain, or remove the grommet from the bed.

STEP 6



Un-roll the tonneau cover, and press the cover down to engage the latches on both sides to secure the cover to the side rails.

If necessary, adjust the side rails/tonneau cover mounting points as necessary for best engagement. Pulling the cover outwards may be necessary to allow the latches to align initially.



STEP 7



To store the tonneau cover, roll the tonneau cover towards the vehicle cab, and secure each side using the straps into the retainers in the tonneau cover panel. Ensure the straps are tightened after clipping into place.

STEP 8



Installation is now complete.