



TUBULAR FRONT UPPER CONTROL ARMS FOR 2-4" LIFT

(2004-2022 F-150)

INSTALLATION INSTRUCTIONS

CONTENTS

(1) LH Upper Control Arm
(1) RH Upper Control Arm

TOOLS REQUIRED

8mm, 10mm, 15mm, 18mm,
19mm, 21mm Sockets/Wrenches
Ratchet & Breaker Bar
Pry Bar
Grease Gun
Spray Lubricant
Floor Jack & Jack Stands

SKU # T617088

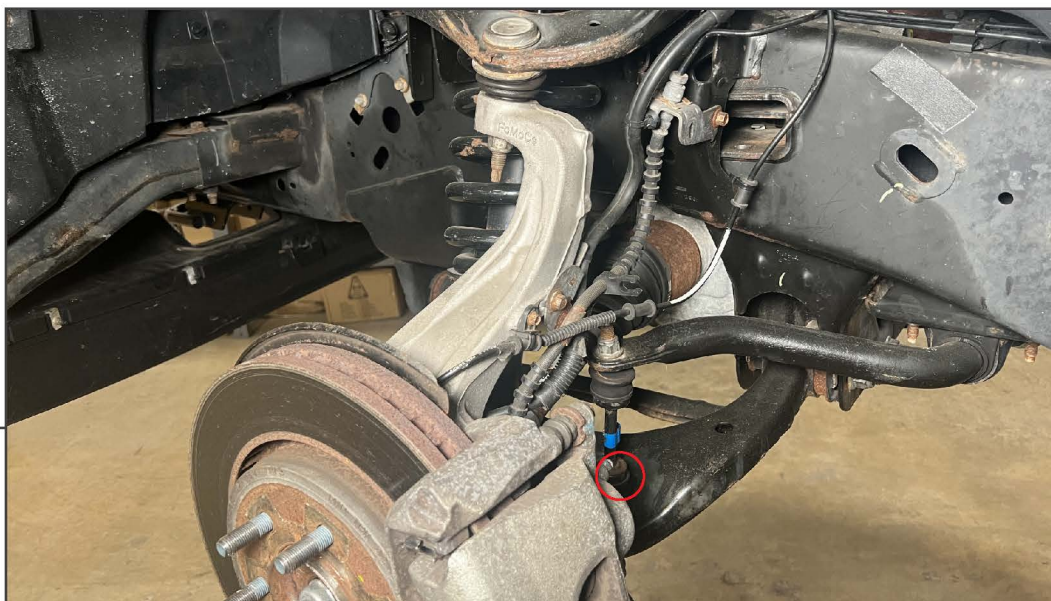
STEP 1



Lift and support the vehicle using a floor jack and jack stands. Remove the wheel from the vehicle.

Remove (1) 8mm bolt and (1) 10mm bolt from the brake line/ABS retainer brackets on the steering knuckle.

STEP 2



Remove (1) 18mm nut from the bottom of the sway bar link.

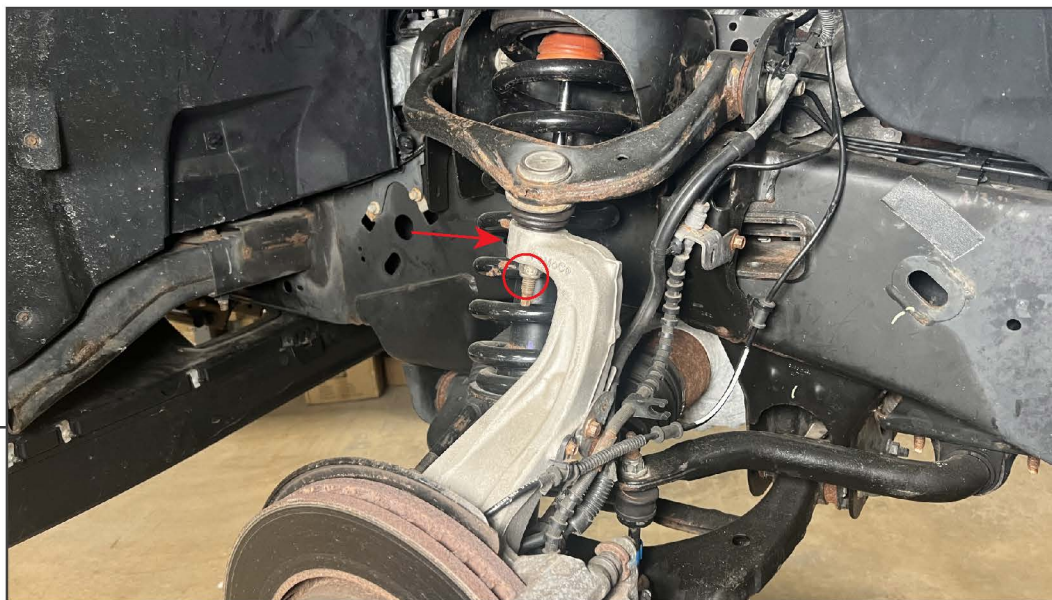
STEP 3

Remove (1) 21mm nut from the tie rod end. Strike the steering knuckle with a hammer to dislodge the tie rod end from the knuckle.

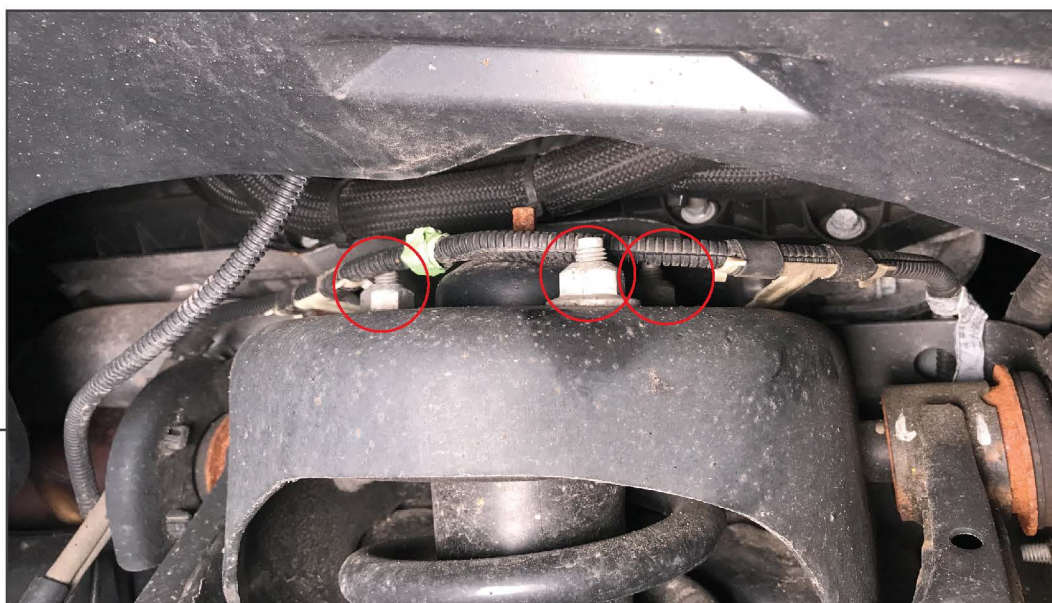
STEP 4

Remove (2) 18mm nuts securing the bottom of the strut to the lower control arm. Once the nuts are removed, the strut studs will remain. These studs are pressed into the strut from the factory and will need to be removed to make removing the strut easier. Using a hammer, hammer the studs up and out of the strut.

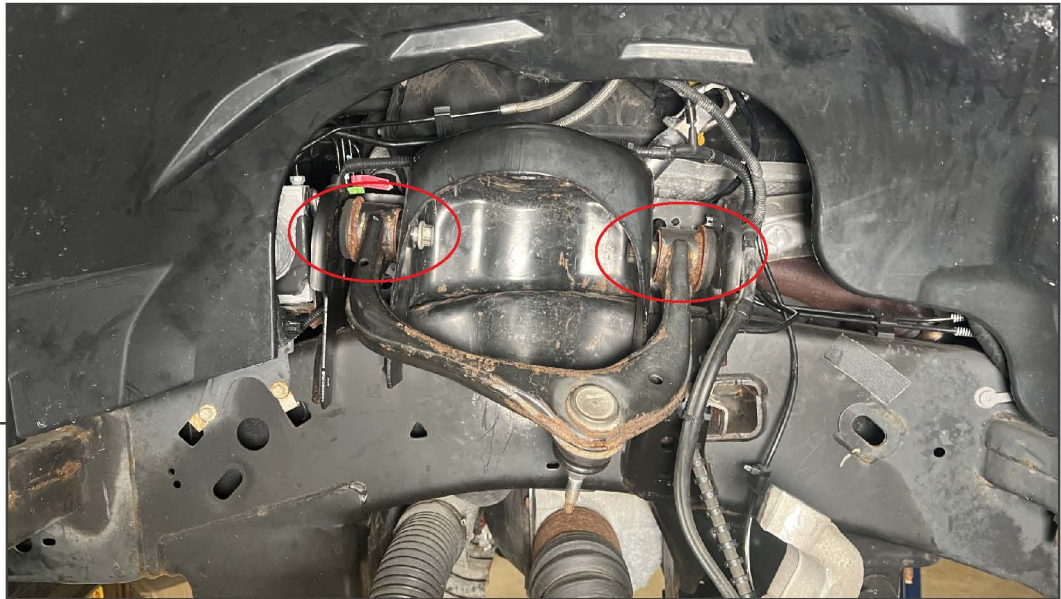
******Removing the studs requires patience, they are not easy to hammer out.

STEP 5

Loosen the 18mm nut securing the upper ball joint to the knuckle. Using a hammer, strike the steering knuckle to separate the ball joint from the knuckle. Remove the nut to separate the control arm from the knuckle. This will allow additional space when removing the strut assembly from the vehicle.

STEP 6

Remove (3) 15mm nuts from the top of the strut assembly. Remove the strut from the vehicle and set aside.



STEP 7

Remove the (2) control arm bolts from the vehicle. Then, use a pry bar to remove the control arm from the vehicle frame. Set the control arm aside.



STEP 8

Install the new control arm to the vehicle reusing the original hardware. Do not fully tighten the bolt at this time. The control arm mounting bolt will be tightened with the vehicle on the ground with the suspension loaded.

Note: Using a rubber hammer to fit the control arm to the vehicle frame mounts may be necessary.

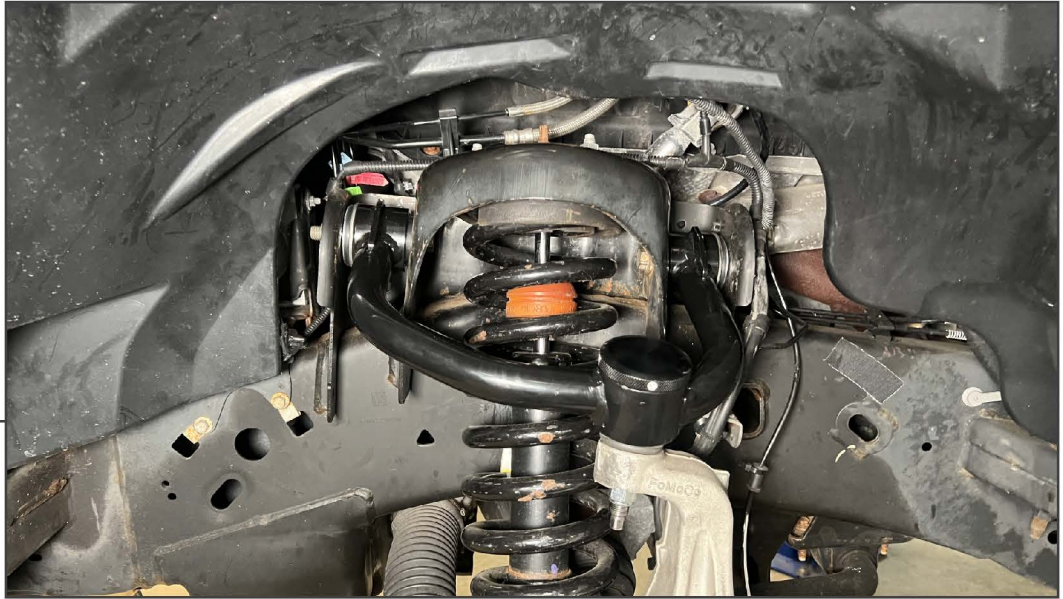
STEP 9

Re-assemble the vehicle suspension components following steps 1-6 in reverse order. Secure the upper ball joint to the vehicle steering knuckle using the included 19mm nut.

STEP 10

Turn the ball joint cap counter-clockwise to remove the ball joint cap to reveal the grease fitting. Fill the ball joint with synthetic grease until full, do not overfill.

With the ball joint greased, re-install the cap.



STEP 11

With the vehicle suspension loaded, torque the upper control arm bolts evenly to 122 ft. lbs.

Installation is now complete.