



V2 EXTREME HD FRONT BUMPER WITH LED LIGHTS

(2018-2020 F-150)

INSTALLATION INSTRUCTIONS

CONTENTS

- | | |
|--|---------------------------------------|
| (1) Front Bumper Assembly | (2) M8x1.25 x 25mm Hex Bolts |
| (1) LH LED Light Enclosure | [Optional Light Bar] |
| (1) RH LED Light Enclosure | (2) M8x1.25 x 16mm Hex Bolts |
| (1) Center Grille Panel | [Optional Light Bar] |
| (2) LH/RH Grille Panels | (4) M8 Lock Washers |
| (1) License Plate Bracket | (6) M8 Flat Washers |
| (1) LED Lights w/ Brackets & Harness Kit | (2) M8 Nuts |
| (1) LH LED Light Bar Bracket | (16) M6x1.00 x 20mm Combo Allen Bolts |
| (1) RH LED Light Bar Bracket | (2) M6x1.00 x 20mm Cap Allen Bolts |
| (2) Plastic Screw Retainers | (4) M6x1.00 x 12mm Cap Allen Bolts |
| (6) Plastic Bolt Holders | (4) M6 Flat Washers |
| (10) Cable Ties | (10) M6 Flange Nuts |
| (4) M10x1.50 x 30mm Hex Bolts | (2) M6 Nuts |
| (4) M10 Lock Washers | (4) M6 Lock Washers |
| (4) M10 Flat Washers | (1) 4mm Allen Key |

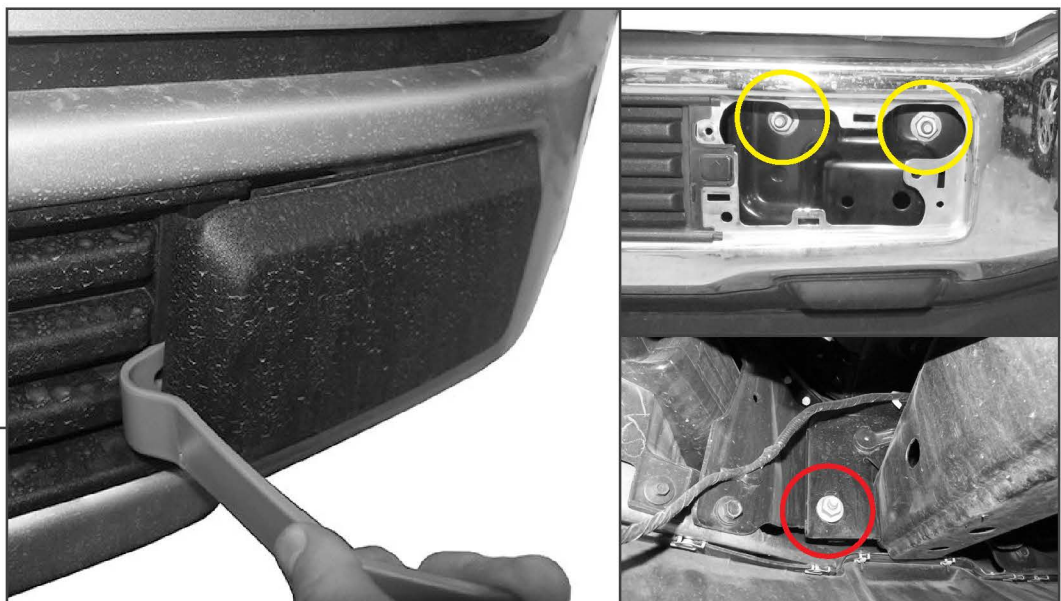
TOOLS REQUIRED

10, 13, 15, 21mm Socket/Wrench
Ratchet
Panel Removal Tool
3mm Allen Key (Provided)

SKU # T619834

**STEP 1**

From under the vehicle, locate the fog light wiring harness routing from the passenger side of the vehicle towards the driver side. Unplug the fog light harness connector along the passenger side frame rail. Using a panel removal tool, dislodge the harness retainers from the vehicle and remove the harness from the vehicle.

**STEP 2**

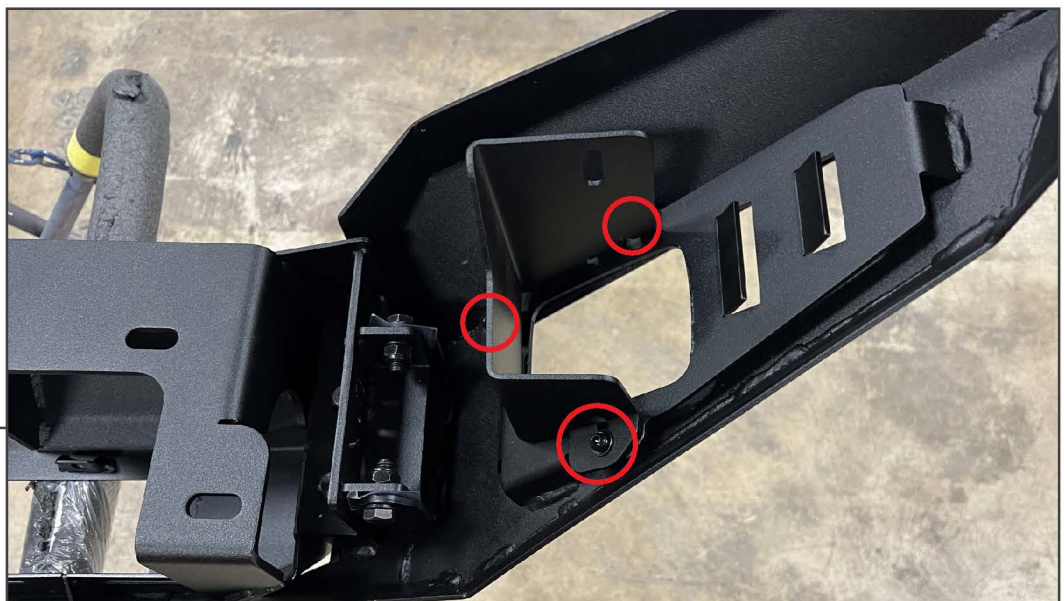
Using a pry tool, remove the (2) plastic covers from the center of the front bumper, revealing the bumper retaining hardware.

Remove (2) 15mm nuts from the inside of the bumper, then remove (4) 21mm nuts from the outside of the bumper.

Pull the bumper away from the vehicle and set aside.

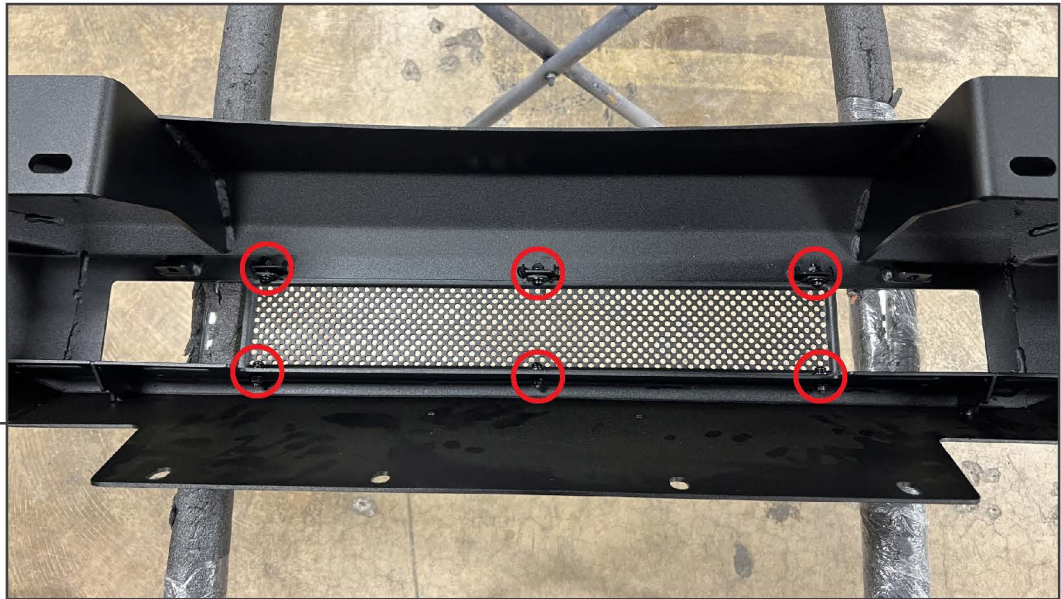
STEP 3

Place the new bumper on a workable surface for assembly. Fully fold the outer corners of the bumper, and secure the corners using (4) M10 x 30mm bolts, (4) M10 lock washers, and (4) M10 flat washers.

STEP 4

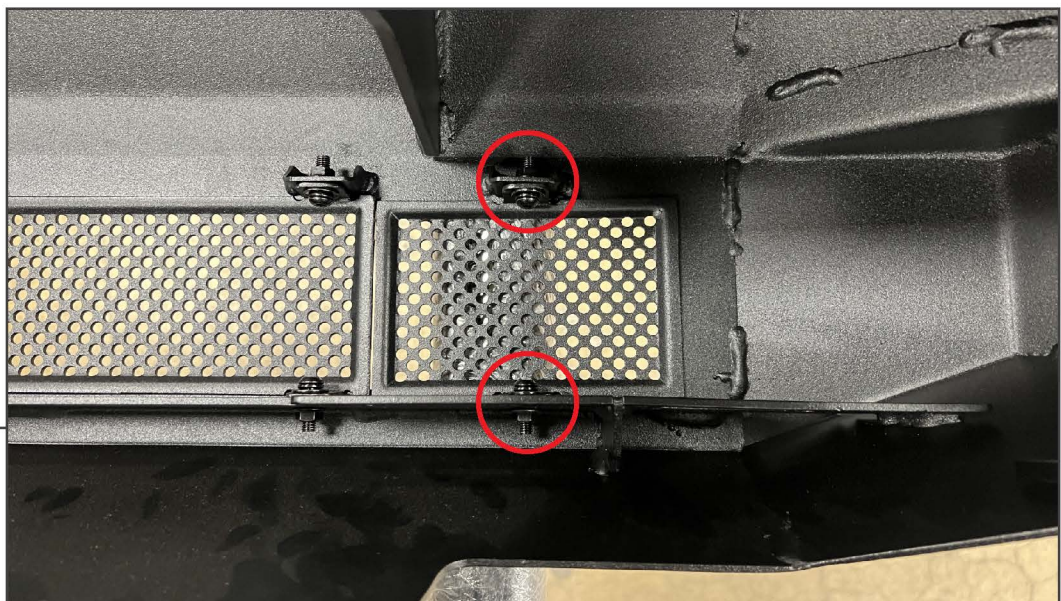
Secure the LED light enclosures to the bumper using (3) M6 combo Allen bolt per enclosure into the pre-installed threaded inserts in the bumper.

Assemble the LED light brackets to the LED lights using (2) M6 x 12mm cap Allen bolts and (2) M6 lock washers. Then, secure the included LED lights to each enclosure using (1) M8 x 30mm hex bolt, (1) M8 lock washer, (1) M8 flat washer, and (1) M8 nut included in the lighting kit.

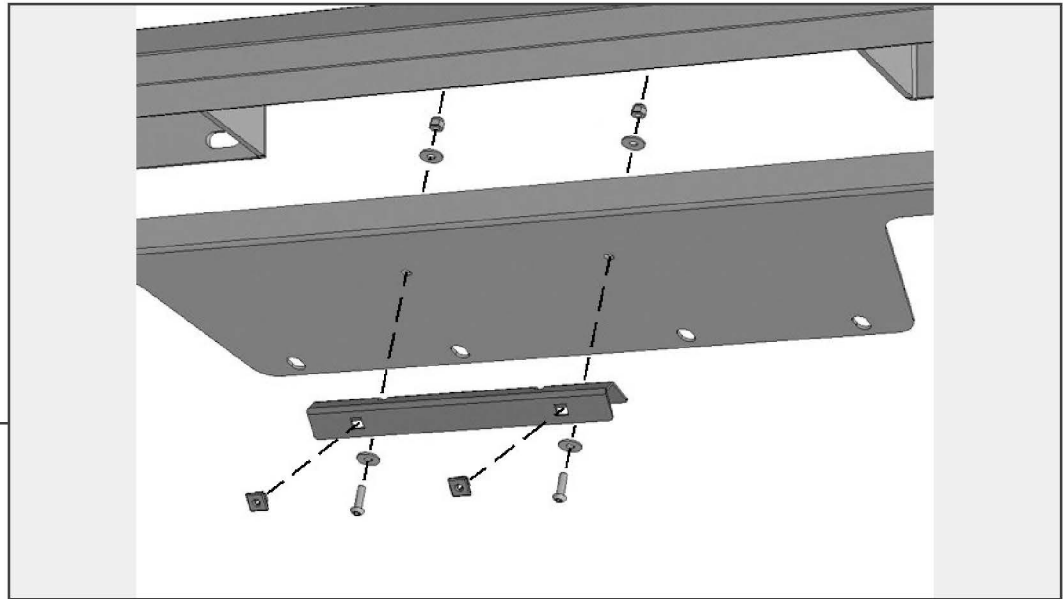
STEP 5

Secure the center grille panel to the bumper using (6) M6 x 20mm combo Allen bolts and (6) M6 flange nuts.

Note: Installing a light bar can be used instead of the grille panels using the included M8 hardware and “L” brackets.

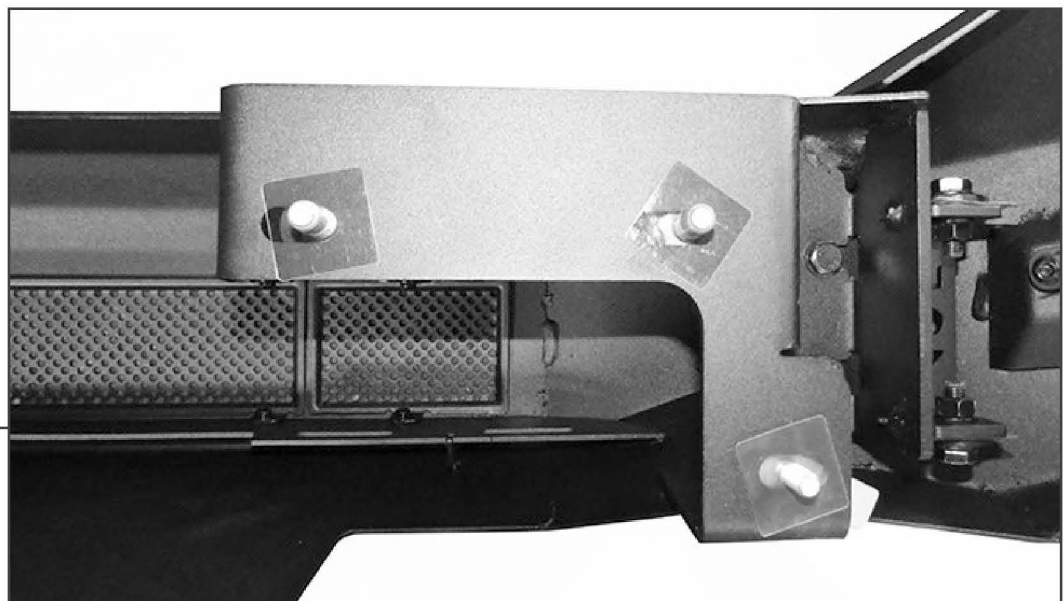
STEP 6

Secure the LH & RH grille panel to the bumper using (2) M6 x 20mm combo Allen bolts and (2) M6 flange nuts per grille panel.

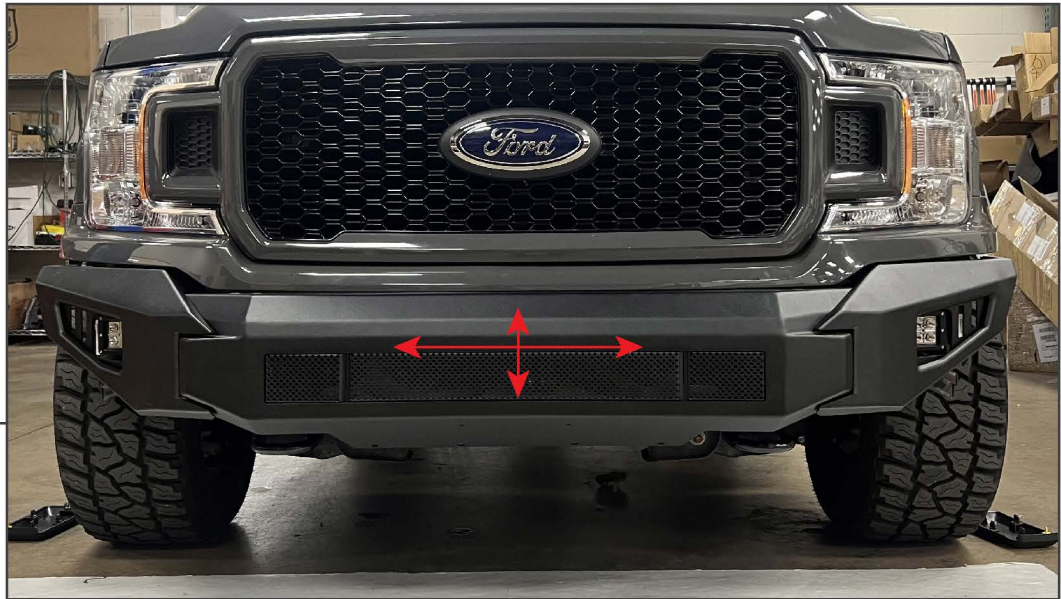
STEP 7

If desired, secure the front license plate mounting bracket to the bottom of the bumper using (2) M6 x 20mm Allen bolts, (4) M6 flat washers, and (2) M6 lock nuts. Then, fit the (2) square plastic screw retainers into the square holes in the bracket.

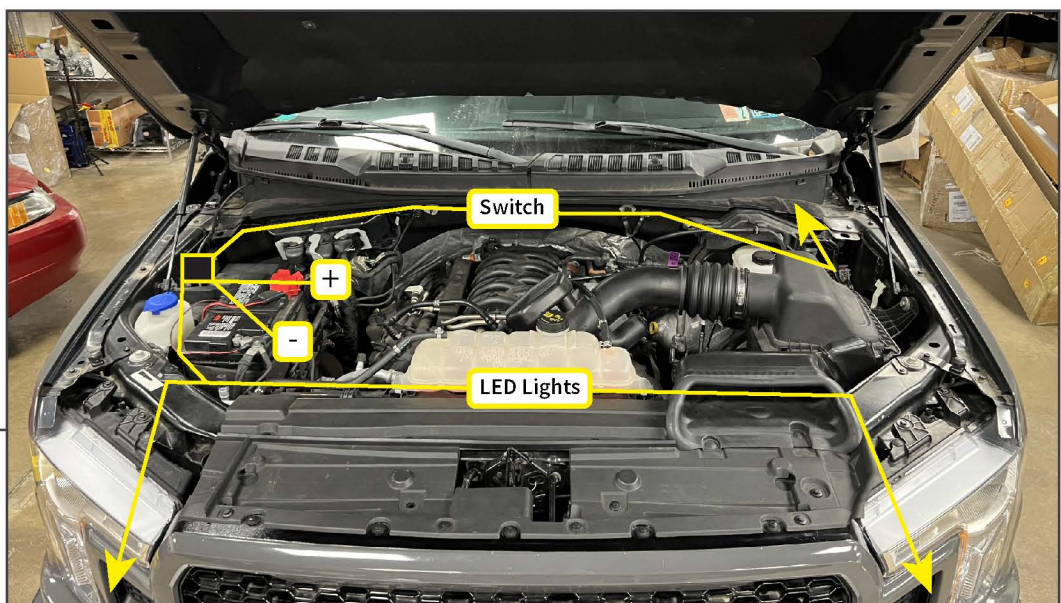
Use OEM license plate screws to secure the license plate to the bracket.

STEP 8

Remove the vehicle bumper mounting studs from the vehicle frame, and fit the studs into the new bumper, and secure using the included (8) plastic stud holders.

**STEP 9**

With a helper, carefully fit the bumper to the vehicle frame rails, and secure using the original bumper mounting nuts. Adjust until the bumper is evenly fitted to the vehicle, and tighten the hardware until the bumper is secure.

**STEP 10**

Open the vehicle hood. Route the included LED light wiring harness throughout the engine bay following the diagram above. Ensure to route the harness away from any hot/moving components. Use the included (10) cable ties to ensure the harness is secure. Mount the relay to a suitable location in the vehicle engine bay.

Unplug the switch connector, and set the switch aside. Route the switch connector on the main harness towards the main firewall grommet below the brake master cylinder. Carefully cut a small slit in the grommet to allow for the switch connector to route into the vehicle interior.

STEP 11

Using the included double sided tape attached to the switch, fit the switch to the desired position on the dashboard. Route the harness towards the vehicle firewall grommet, and plug the connectors together. Ensure the harness is secure away from the steering/pedal assemblies.

- Connect the Red ring terminal lead to battery + terminal.
- Connect the Black ring terminal lead to battery - terminal.

Test LED lighting at this time.

STEP 12

Installation is now complete.