

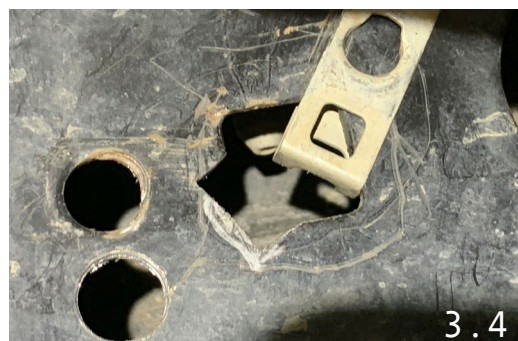


CAMBURG FORD RAPTOR '17-20 MUFFLER HANGER SPACER INSTALLATION

PART NBR	INCLUDED HARDWARE	QTY
950177	M8x1.25x50 JIS FLANGE HEAD 10.9 BOLT	3
960465	1.25" OD x 0.375" ID x 1" ALUMINUM SPACER	3

This is a guide to help you through the process. It's your responsibility to ensure parts are being installed correctly using the correct tools and procedures to the proper torque.

- Remove the muffler and rear exhaust prior to installing the 2.5 bump stop kit.
- Once the 2.5 bump stop kit is fully installed, re-install the exhaust and check all clearances.
- Depending on your year truck and exhaust system (OEM or aftermarket), you MAY need to space the muffler hangers down from the frame if the exhaust tubing makes contact with the bump stop x-member. IF your exhaust needs to be spaced down, follow these basic instructions.
- Use the supplied bolt and spacer to lower the exhaust hanger mount at the rear of the muffler. You may need to bend the tab that registers into the frame slightly. [See picture 1.1 for reference]
- For the next two exhaust hangers after the muffler that support the tubing, you will need to drill new mounting holes.
- On the passenger side, remove the hanger from the frame and position the clip-on nut in the frame out of the way vertically. [See picture 2.1 for reference]
- Bolt the hanger onto the frame with the supplied bolt and spacer under the frame rail. Then mark the hole on the side of the frame. [See picture 2.2 for reference]
- Un-bolt the hanger and drill a 1/4" hole in the new location. Then use a 1/2" drill bit to enlarge. You can also use a step-bit if you have one. [See picture 2.3 for reference]
- Then reposition the clip-on nut to the new hole. Install the spacer and supplied bolt on the lower mount and re-use the OEM bolt for the upper mount. [See picture 2.4 for reference.]
- On the driver side, remove the hanger from the frame and position the clip-on nut in the frame out of the way vertically.
- Bolt the hanger onto the frame with the supplied bolt and spacer under the frame rail. Then mark the hole on the side of the frame.
- Un-bolt the hanger and drill a 1/4" hole in the new location. Then use a 1/2" drill bit to enlarge. You can also use a step-bit if you have one. [See picture 3.3 for reference]
- To position the clip-on nut to the new hole, you'll need to use a small flat file to notch the access hole in the frame. Then reposition the clip-on nut to the new hole. Install the spacer and supplied bolt on the lower mount and re-use the OEM bolt for the upper mount. [See picture 3.4 & 3.5 for reference]
- Check all exhaust hardware and clamps for proper tightness and clearances.



[04.01.21]



[05.14.25]

FORD RAPTOR 2017-2020 2.5 REAR BUMP STOP MOUNT KIT PART# CAM-120025

[980096]

Always inspect your suspension after off-roading and at your routine service intervals. Use of products sold by Camburg Engineering is at the consumer's own risk. Proper installation and proper use of all products must be followed for optimal safety and performance. Installing most suspension products will raise the center of gravity of the vehicle and can increase the susceptibility to a rollover and alter the handling characteristics. Camburg Engineering products may void aspects of the vehicles warranty. Camburg Engineering reserves the right to change the design, material or specifications of any product without assuming any obligation to modify any product previously manufactured and without prior notice. Every effort has been made to avoid printing errors and specifications. By purchasing, installing and/or using these products you are accepting these stated conditions and accept all liability and responsibility.

Thanks for purchasing our 2.5 rear bump stop mount kit. If you are not installing these yourself have a qualified shop do so. These are designed to be used in a spring-over configuration with FOX or King 2.5 bump stops. Check the parts list to make sure you have every component prior to installing. Camburg Engineering has made every attempt to insure you receive the highest quality components in the most complete manner. This is a guide to help you through the process with some recommended torque specs & notes. It's your responsibility to ensure parts are being installed correctly using the correct tools and procedures. For step-by-step instructions refer to a Ford or service/repair manual.

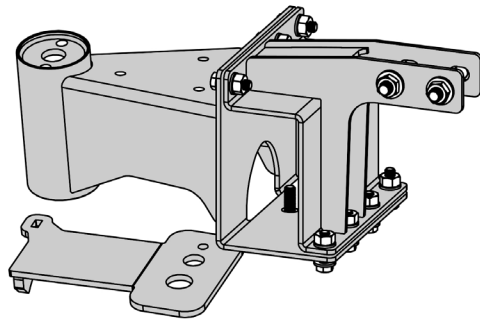
Important Installation Notes:

- We recommend removing or raising the bed from the frame rails for easier access during installation. You may need to loosen or remove the exhaust from the muffler back as well.
- These are designed to use 2.5 x 2.5" travel FOX #980-02-801, #981-25-040 or King #BS2525 bump stops in a spring-over configuration.
- Some exhaust systems may require the muffler to be spaced down with the supplied hardware. See supplied instruction sheet. In rare extreme cases the aftermarket exhaust may need to be modified depending on routing and clearances.
- Use the OEM bump stop bolt frame location to locate the bump stop mounts with the supplied M10 hardware.
- The bump stop strike pads get installed between the leaf spring and axle housing perch.
- You will need to cut & remove the small brackets the ABS sensor wire presses into for our strike pads to fit correctly. Cut, sand smooth and paint for rust prevention.
- Attach existing ABS speed sensor wire & plastic mounting clip into the lower strike pad slot with proper clearances and slack.
- Remove the driver-side brake hose bracket that attached to the same ABS mount you cut off. Pry the bracket open and slip off the hose being careful not to damage the hose. Then zip tie to ABS line.
- Attach chassis wiring harness on driver-side to underside of x-member using factory mounting clip.
- Refer to our website for installed product images.
- Use RED loctite on all fasteners > 1/4" dia.
- Use BLUE loctite on 1/4" skid plate bolts.
- Inspect and re-torque all hardware and components after the first 500 miles, inspect at your scheduled maintenance intervals and whenever using the vehicle off-road.

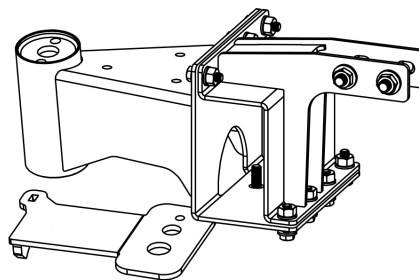
Recommended Torque Specs:

- M10 Bump Stop Bolts = 30 ft/lbs.
- 3/8-24 Hardware = 40 ft/lbs.
- 1/2-13 Hardware = 80 ft/lbs.
- Leaf Spring U-Bolt Nuts = Refer to FORD service manual or leaf spring manufacturer specs.
- Bed Torx Frame Bolts = 60 ft/lbs.

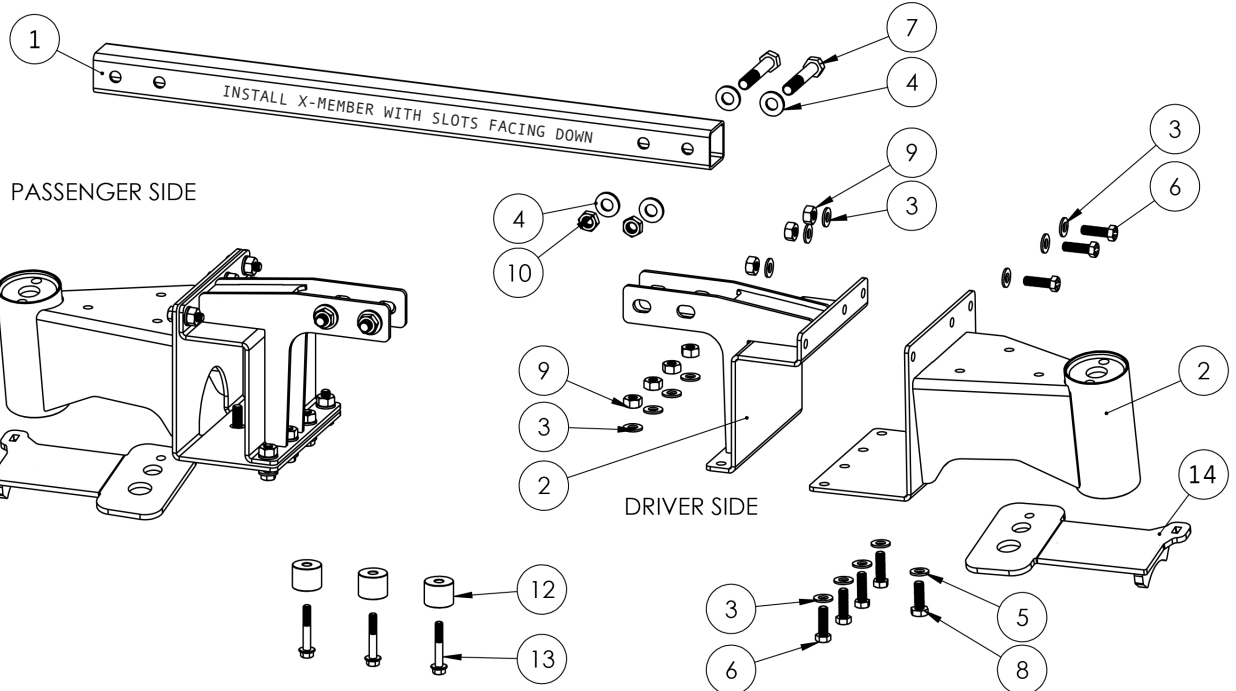
ID	PART NBR	DESCRIPTION	QTY
2		DRIVER SIDE BUMP STOP FRAME MOUNT	1
		PASSENGER SIDE BUMP STOP FRAME MOUNT	1
14		DRIVER SIDE LEAF SPRING STRIKE PAD	1
		PASSENGER SIDE LEAF SPRING STRIKE PAD	1
1		BUMP STOP X-MEMBER	1
6	950175	3/8-24 x 1.25" GRADE 8 HEX BOLT	14
3	950012	3/8" SAE GRADE 8 WASHER	28
9	950190	3/8-24 STOVER LOCK NUT	14
8	950193	M10 X 1.5 X 30 GRADE 10.9 HEX BOLT	2
5	950192	M10 WASHER	2
7	950191	1/2-13 X 3" GRADE 8 HEX BOLT	4
4	950014	1/2" SAE GRADE WASHER	8
10	950045	1/2-13 STOVER LOCK NUT	4
13	950177	M8 X 1.25 X 50 GRADE 10.9 FLANGE HEAD BOLT	3
12	960465-116	MUFFLER SPACER (1.25" OD X 3/8" ID X 1" THK)	3
	030017	CAMBURG 8.5" STICKER	



PASSENGER SIDE



DRIVER SIDE



Warranty Information
Scan or Click QR Code

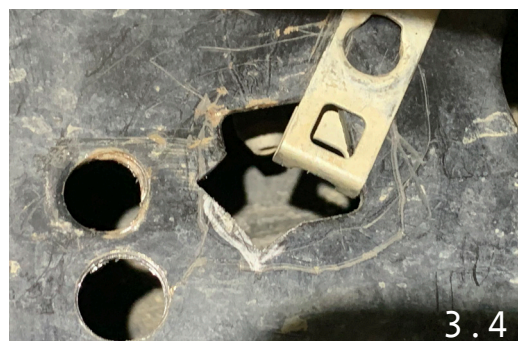


CAMBURG FORD RAPTOR '17-20 MUFFLER HANGER SPACER INSTALLATION

PART NBR	INCLUDED HARDWARE	QTY
950177	M8x1.25x50 JIS FLANGE HEAD 10.9 BOLT	3
960465	1.25" OD x 0.375" ID x 1" ALUMINUM SPACER	3

This is a guide to help you through the process. It's your responsibility to ensure parts are being installed correctly using the correct tools and procedures to the proper torque.

- Remove the muffler and rear exhaust prior to installing the 2.5 bump stop kit.
- Once the 2.5 bump stop kit is fully installed, re-install the exhaust and check all clearances.
- Depending on your year truck and exhaust system (OEM or aftermarket), you MAY need to space the muffler hangers down from the frame if the exhaust tubing makes contact with the bump stop x-member. IF your exhaust needs to be spaced down, follow these basic instructions.
- Use the supplied bolt and spacer to lower the exhaust hanger mount at the rear of the muffler. You may need to bend the tab that registers into the frame slightly. [See picture 1.1 for reference]
- For the next two exhaust hangers after the muffler that support the tubing, you will need to drill new mounting holes.
- On the passenger side, remove the hanger from the frame and position the clip-on nut in the frame out of the way vertically. [See picture 2.1 for reference]
- Bolt the hanger onto the frame with the supplied bolt and spacer under the frame rail. Then mark the hole on the side of the frame. [See picture 2.2 for reference]
- Un-bolt the hanger and drill a 1/4" hole in the new location. Then use a 1/2" drill bit to enlarge. You can also use a step-bit if you have one. [See picture 2.3 for reference]
- Then reposition the clip-on nut to the new hole. Install the spacer and supplied bolt on the lower mount and re-use the OEM bolt for the upper mount. [See picture 2.4 for reference.]
- On the driver side, remove the hanger from the frame and position the clip-on nut in the frame out of the way vertically.
- Bolt the hanger onto the frame with the supplied bolt and spacer under the frame rail. Then mark the hole on the side of the frame.
- Un-bolt the hanger and drill a 1/4" hole in the new location. Then use a 1/2" drill bit to enlarge. You can also use a step-bit if you have one. [See picture 3.3 for reference]
- To position the clip-on nut to the new hole, you'll need to use a small flat file to notch the access hole in the frame. Then reposition the clip-on nut to the new hole. Install the spacer and supplied bolt on the lower mount and re-use the OEM bolt for the upper mount. [See picture 3.4 & 3.5 for reference]
- Check all exhaust hardware and clamps for proper tightness and clearances.



[04.01.21]