

FRONT BUMPER MOUNTED 20-INCH LED LIGHT BAR AND BRACKET

(2006-2008 F-150)

INSTALLATION INSTRUCTIONS

CONTENTS

- (1) 20" LED Light Bar
- (1) LH Mounting Bracket
- (1) RH Mounting Bracket
- (2) M8x1.25 x 20mm Allen Bolts
- (2) M8x1.25 x 25mm Hex Bolts
- (2) M8 Lock Washers
- (6) M8 Flat Washers
- (2) M8 Lock Nuts
- (2) M8 Spacers
- (1) 6mm Allen Key

TOOLS REQUIRED

- 8mm, 13mm Socket/Wrench
- Ratchet
- 6mm Allen Key
- Small Pry Tool

SKU # T621253

STEP 1



Begin by locating the hardware inside the bumper slot.

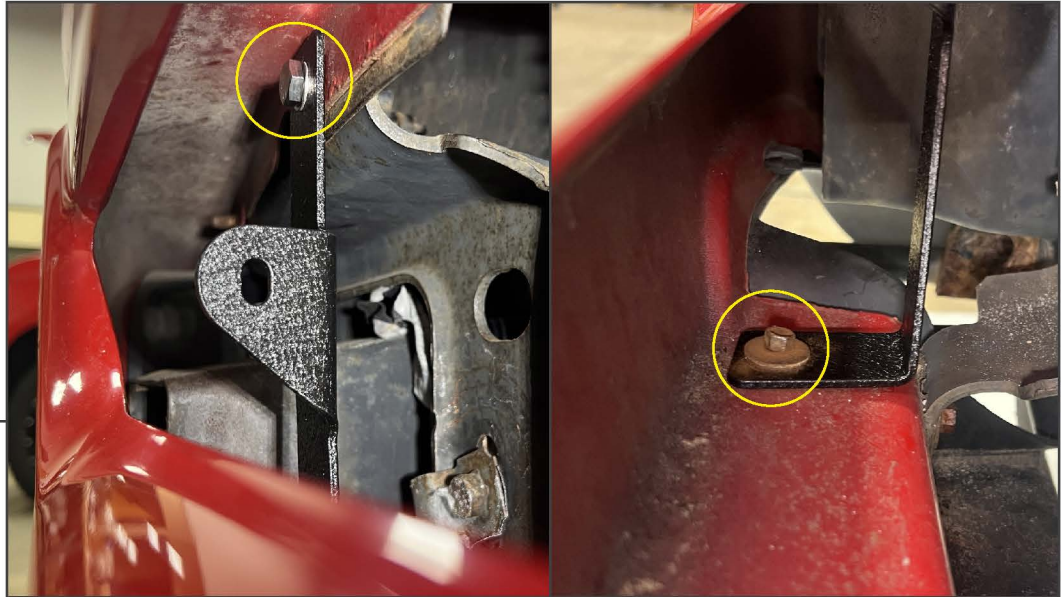
- Locate and remove the upper mounting bolt fitted through the bumper bracket. Remove the threaded insert using a pry tool.
- Locate and remove the lower bolt from the air dam.

Repeat this step for the opposite side of the bumper.

STEP 2



Identify the front/rear of the mounting bracket. Then, place the light bar onto the mounting bracket, ensuring the wiring harness lead is on the passenger's side of the vehicle when mounted.



STEP 3

Loosely the top of each mounting bracket using (1) M8 x 25mm hex bolt, (2) M8 flat washers, and (1) M8 lock nut.

Loosely secure the bottom of each mounting bracket using the original bumper hardware.

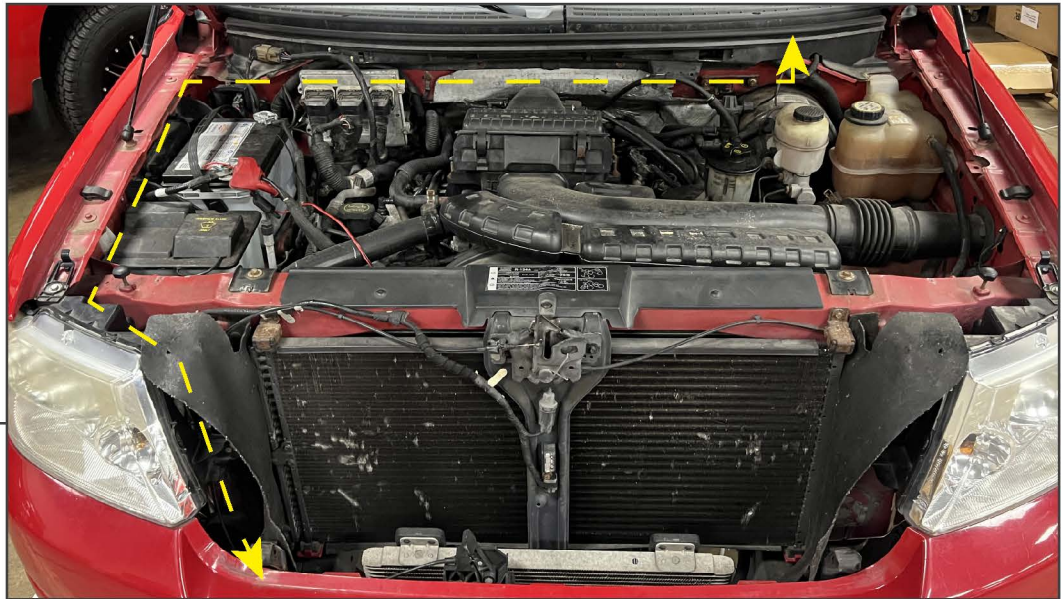
Tighten the lower bolts first, then fully tighten the upper M8 hardware until secure.



STEP 4

Fit the light bar to the brackets, ensuring the wire lead is on the passenger side of the vehicle.

Use the included (2) M8 Allen bolts, (2) M8 lock washers, (2) M8 flat washers, and (2) M8 spacers to loosely secure the light bar to the bracket. The spacers will fit between the light bar and the bracket.



STEP 5

Carefully route the wiring harness across the vehicle.

- Plug the light bar into the harness connector.
- Route switch into vehicle through suitable firewall grommet. Secure switch to dashboard.
- Connect Red ring terminal to battery +.
- Connect Black ring terminal to battery -.
- Mount relay to a secure location.



STEP 6

Test the light bar, and adjust the light bar for best lighting output. Tighten the light bar adjusting hardware once properly adjusted.

Installation is now complete.