



---

# CANYON DROP STEPS

(2004-2014 F-150 - SUPERCAB)

---

## INSTALLATION INSTRUCTIONS

### CONTENTS

---

- (1) LH Drop Step
- (1) RH Drop Step
- (6) Rectangular Brackets
- (3) LH Mounting Brackets
- (3) RH Mounting Brackets
- (12) M8x1.25 Clip Nuts
- (12) M8x1.25 x 25mm Combo Bolts
- (36) M8x1.25 x 30mm Bolts
- (12) M8 Flat Washers [28mm OD]
- (48) M8 Flat Washers [22mm OD]
- (12) M8 Lock Washers
- (24) M8 Lock Nuts

### TOOLS REQUIRED

---

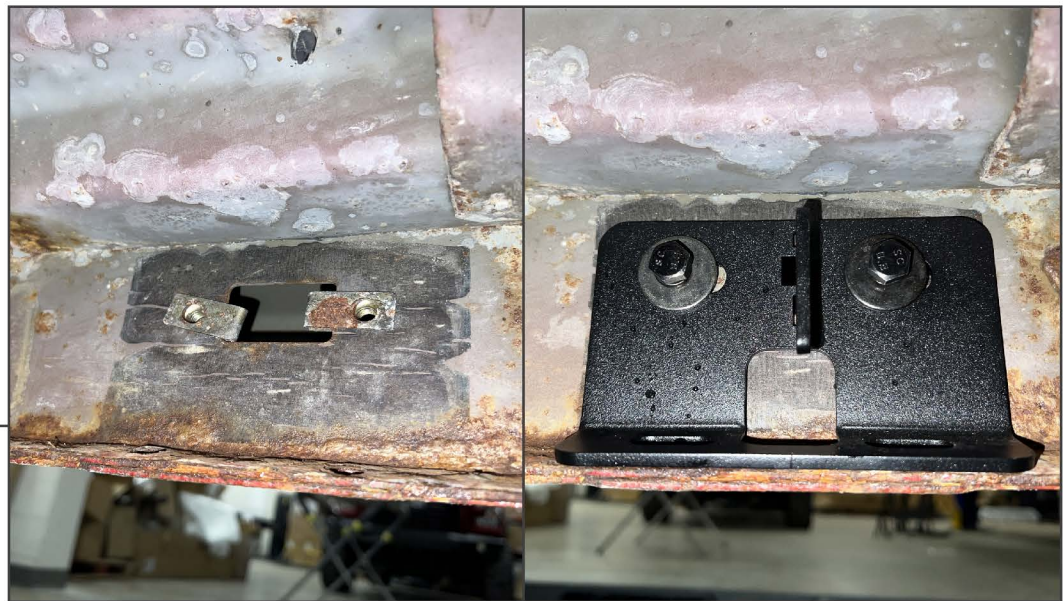
13mm Socket/Wrench  
Ratchet

SKU # T623107

**STEP 1**

Identify the side steps mounting brackets using the diagram above. The LH and RH mounting brackets are different.

The included (6) rectangular shaped bracket are identical and work on both LH and RH sides of the vehicle.

**STEP 2**

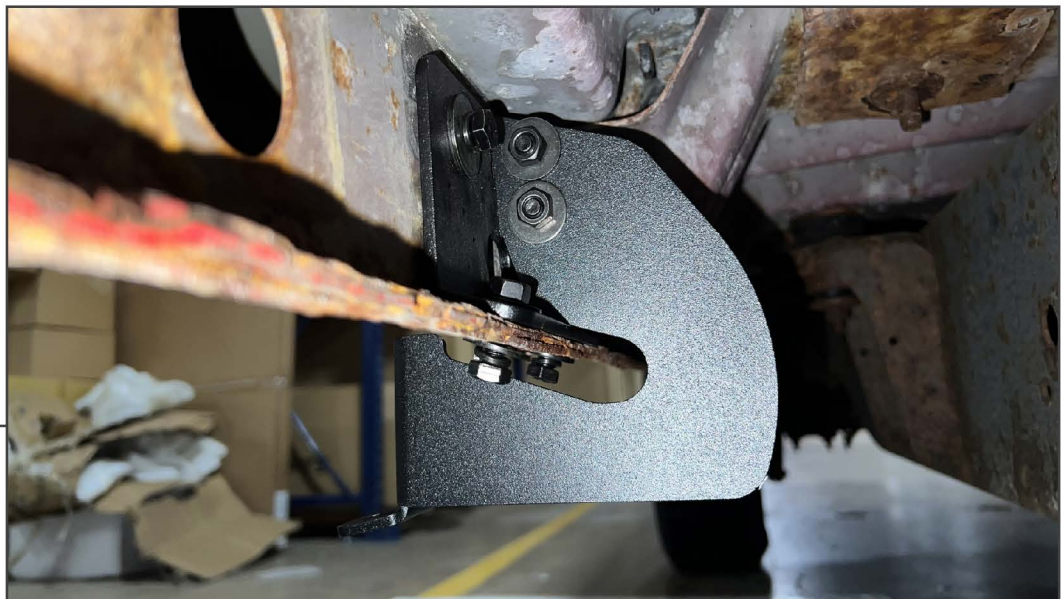
From under the vehicle, look along the inside of the rocker panel for the side step mounting points. Fit (2) M8 clip nuts into each of the vehicle rocker panel mounts.

Using (2) M8 x 30mm bolts, (2) M8 lock washers, and (2) M8 flat washers [28mm OD], loosely secure each rectangular bracket to the rocker panel.



**STEP 3**

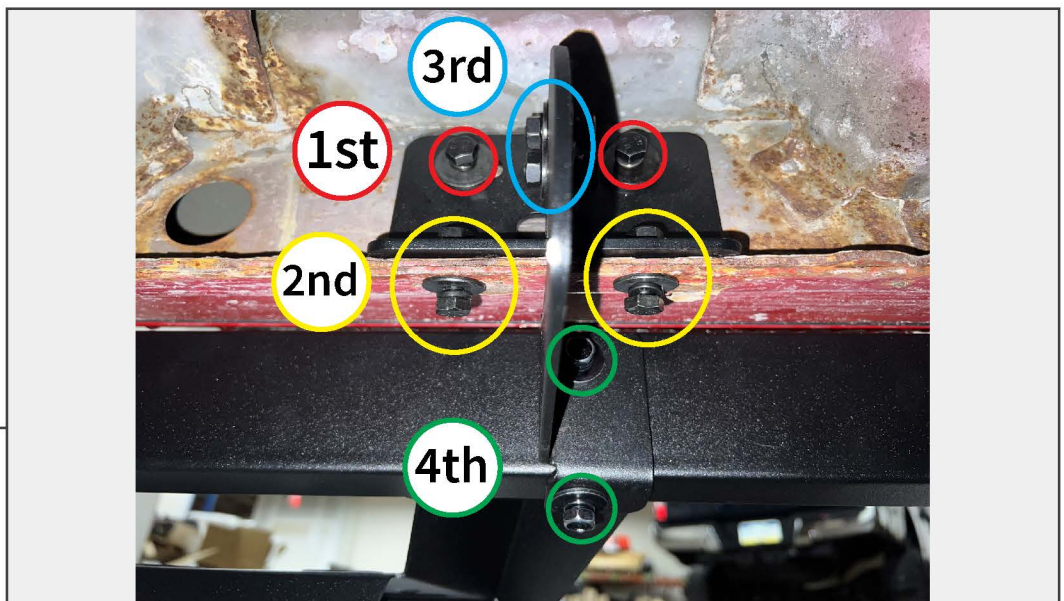
Loosely secure the rectangular brackets to the bottom of the rocker panel using (2) M8 x 30mm bolts, (4) M8 flat washers [22mm OD], and (2) M8 lock nuts per bracket.

**STEP 4**

Fit the appropriate step brackets to the front-most side of the rectangular brackets. Secure each step bracket to the rectangular bracket using (2) M8 x 25mm bolts, (4) M8 flat washers [22mm OD], and (2) M8 lock nuts.

**STEP 5**

With a helper, align the side step to the previously mounted step brackets. Loosely secure the side step to the step brackets using (2) M8 x 25mm combo bolts per bracket.

**STEP 6**

Adjust the side step to best fit the vehicle, then tighten the mounting hardware following the diagram above.



---

**STEP 7**

Repeat Steps 1-6 to install the remaining drop step to the opposite side of the vehicle.

Installation is now complete.