



CANYON DROP STEPS

(2004-2014 F-150 - SUPERCREW)

INSTALLATION INSTRUCTIONS

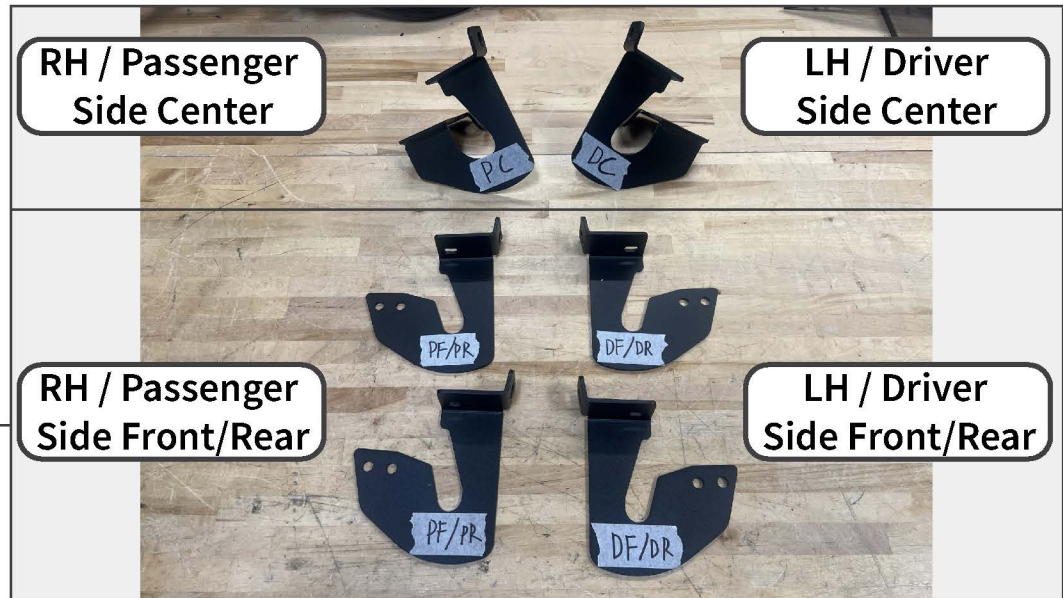
CONTENTS

- (1) LH Drop Step
- (1) RH Drop Step
- (4) Rectangular Brackets
- (2) LH Front/Rear Brackets
- (2) RH Front/Rear Brackets
- (1) LH Center Bracket
- (1) RH Center Bracket
- (10) M8 Clip Nuts
- (12) M8 x 25mm Combo Bolts
- (28) M8 x 30mm Bolts
- (36) M8 Flat Washers [22mm OD]
- (10) M8 Flat Washers [28mm OD]
- (10) M8 Lock Washers
- (18) M8 Lock Nuts

TOOLS REQUIRED

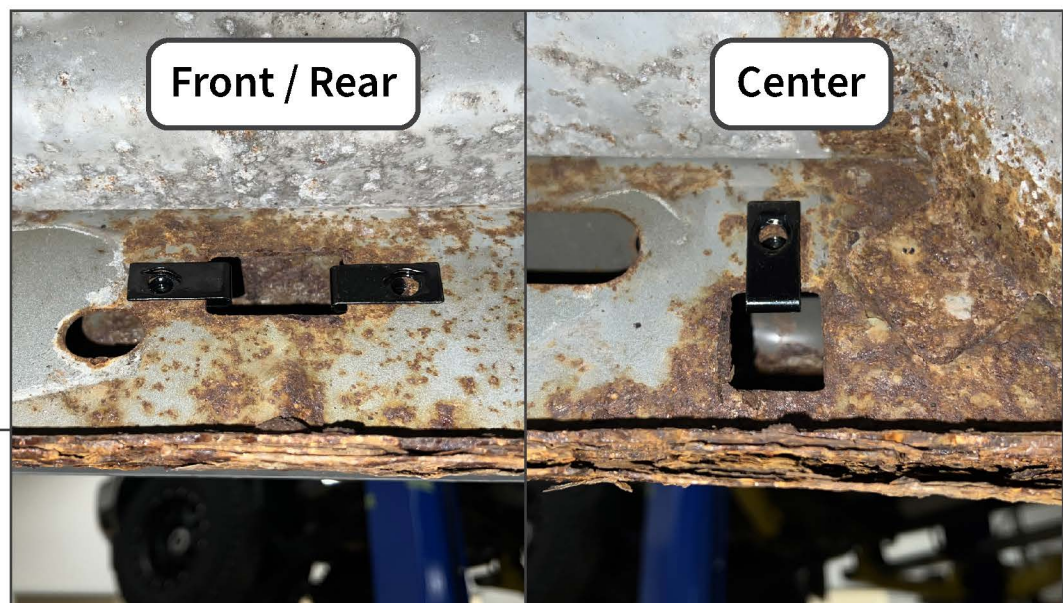
- 13mm Socket/Wrench
- Ratchet

SKU # T623108

STEP 1

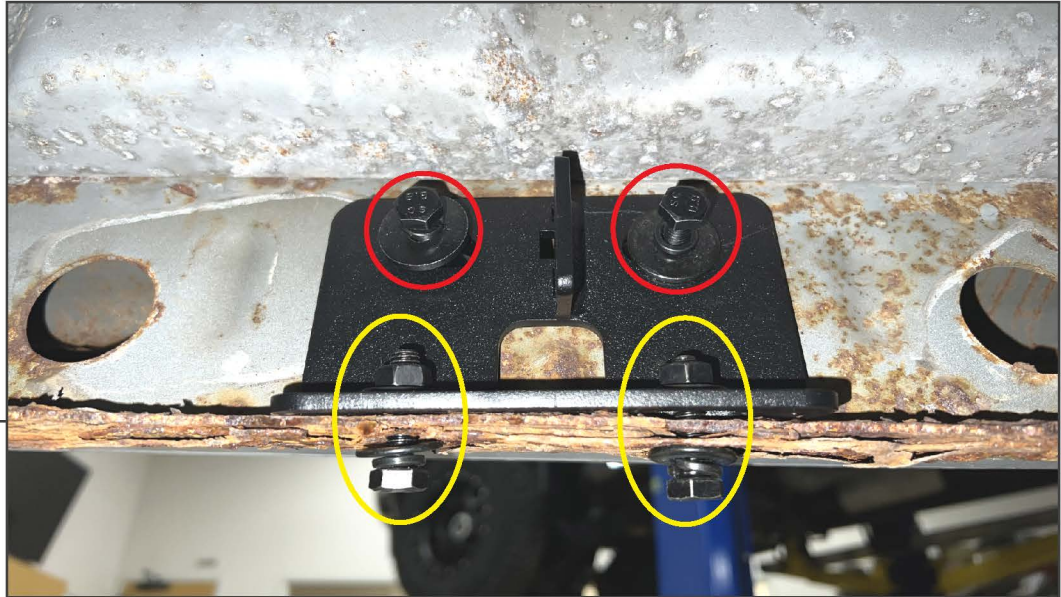
Identify the side steps mounting brackets using the diagram above. The LH and RH mounting brackets are different. The center mounting bracket is different from the front/rear brackets.

The included (6) rectangular shaped bracket are identical and work on both LH and RH sides of the vehicle.

STEP 2

From under the vehicle, look along the inside of the rocker panel for the side step mounting points. Fit (2) M8 clip nuts into the front and rear rocker panel mounts. Fit (1) M8 clip nut into the center rocker panel mount.

The clip nuts will allow bolts to secure the provided brackets to the vehicle rocker panel.

STEP 3

Using (2) M8 x 30mm bolts, (2) M8 lock washers, and (2) M8 flat washers [28mm OD], loosely secure each rectangular bracket to the rocker panel utilizing the previously installed M8 clip nuts.

Loosely secure the rectangular brackets to the bottom of the rocker panel using (2) M8 x 30mm bolts, (4) M8 flat washers [22mm OD], and (2) M8 lock nuts per bracket.

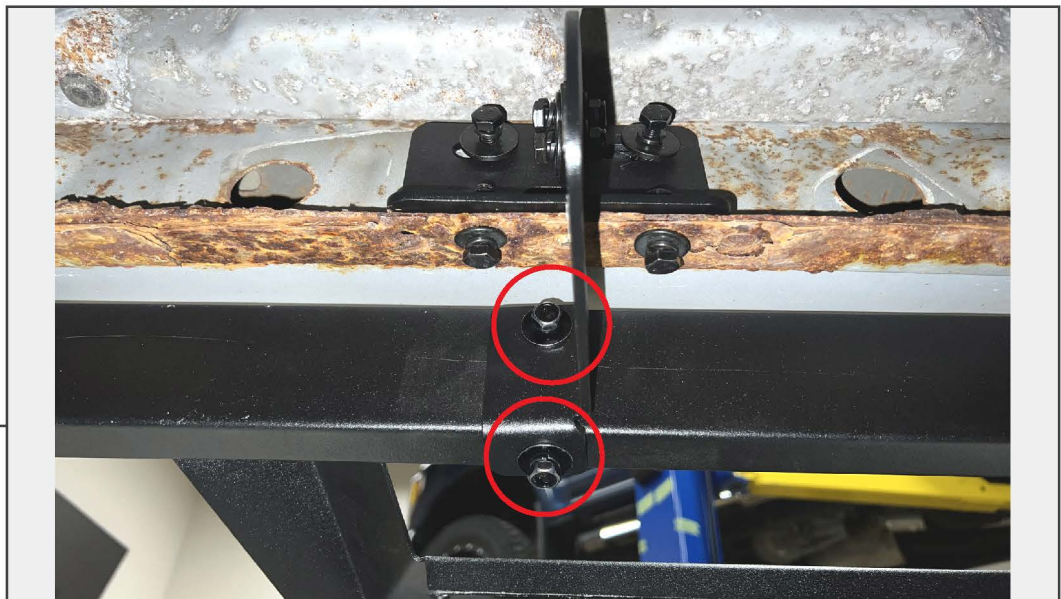
STEP 4

Using (1) M8 x 30mm bolt, (1) M8 lock washer, and (1) M8 flat washer [28mm OD], loosely secure the center mounting bracket to the rocker panel utilizing the previously installed M8 clip nut.

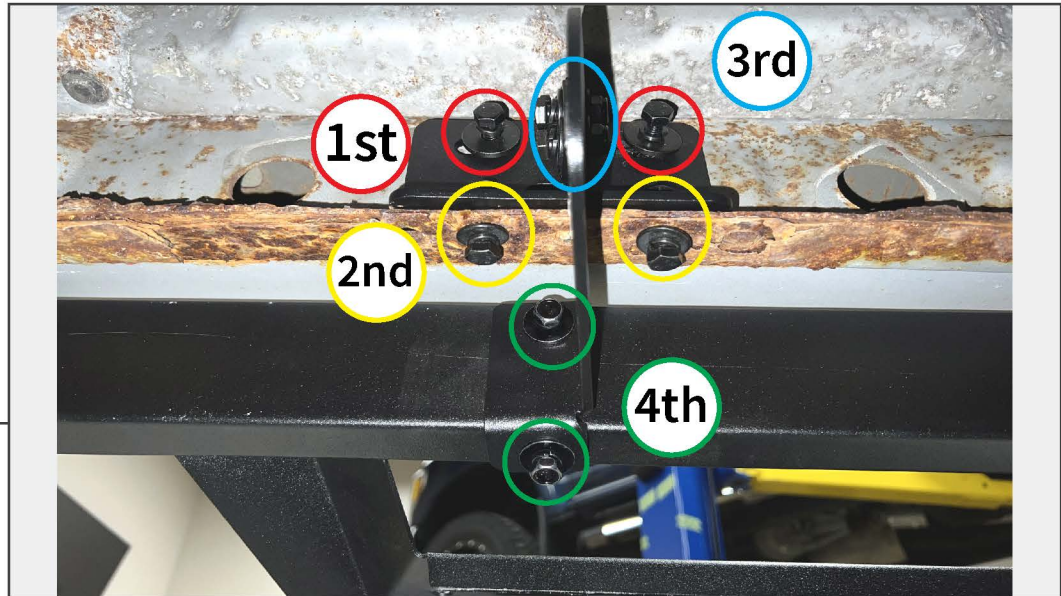
Loosely secure the center mounting bracket to the bottom of the rocker panel using (1) M8 x 30mm bolt, (2) M8 flat washer [22mm OD], and (1) M8 lock nut per bracket.

**STEP 5**

Fit the front and rear step brackets to the front-most side of the rectangular brackets. Secure each step bracket to the rectangular bracket using (2) M8 x 30mm bolts, (4) M8 flat washers [22mm OD], and (2) M8 lock nuts.

**STEP 6**

With a helper, align the side step to the previously mounted step brackets. Loosely secure the side step to the step brackets using (2) M8 x 25mm combo bolts per bracket.

**STEP 7**

Adjust the side step to best fit the vehicle, then tighten the mounting hardware following the diagram above.

**STEP 8**

Repeat Steps 1-6 to install the remaining drop step to the opposite side of the vehicle.

Installation is now complete.