



HD MODULAR FRONT BUMPER WITH LED LIGHTS

(2015-2017 F-150)

INSTALLATION INSTRUCTIONS

CONTENTS

- | | |
|--|--|
| (1) Front Bumper w/ Folding End Caps | (2) M8x1.25 x 25mm Hex Bolts
(Optional Light Bar) |
| (1) LH LED Light Enclosure | (2) M8x1.25 x 16mm Hex Bolts
(Optional Light Bar) |
| (1) RH LED Light Enclosure | (4) M8 Lock Washers |
| (1) Center Mesh Panel | (6) M8 Flat Washers |
| (2) LH/RH Mesh Panels | (14) M6x1.00 x 20mm Combo Allen
Bolts |
| (1) License Plate Bracket | (2) M6x1.00 x 20mm Allen Bolts |
| (2) License Plate Screw Retainers | (4) M6 Flat Washers |
| (1) LH Light Bar "L" Bracket | (10) M6 Flange Nuts |
| (1) RH Light Bar "L" Bracket | (2) M6 Lock Nuts |
| (1) LED Lights w/ Brackets & Harness Kit | (1) 4mm Allen Key |
| (6) M12x1.75 x 35mm Hex Bolts | (6) Plastic Bolt Holders |
| (6) M12 Lock Washers | (10) Cable Ties |
| (12) M12 Flat Washers | |
| (6) M12 Nuts | |
| (4) M10x1.50 x 30mm Hex Bolts | |
| (4) M10 Lock Washers | |
| (4) M10 Flat Washers | |

TOOLS REQUIRED

10, 13, 15, 16, 21mm Socket/Wrench
Ratchet
Panel Removal Tool
3mm, 4mm Allen Key (Provided)

SKU # T623854

**STEP 1**

From under the vehicle, locate the fog light wiring harness routing from the passenger side of the vehicle towards the driver side. Unplug the fog lights from the harness. Using a panel removal tool, dislodge the harness retainers from the vehicle bumper.

**STEP 2**

Using a pry tool, remove the plastic cover from the center of the front bumper, revealing the bumper retaining hardware.

Remove (2) 15mm nuts from the inside of the bumper, then remove (4) 21mm nuts from the outside of the bumper.

Pull the bumper away from the vehicle and set aside.

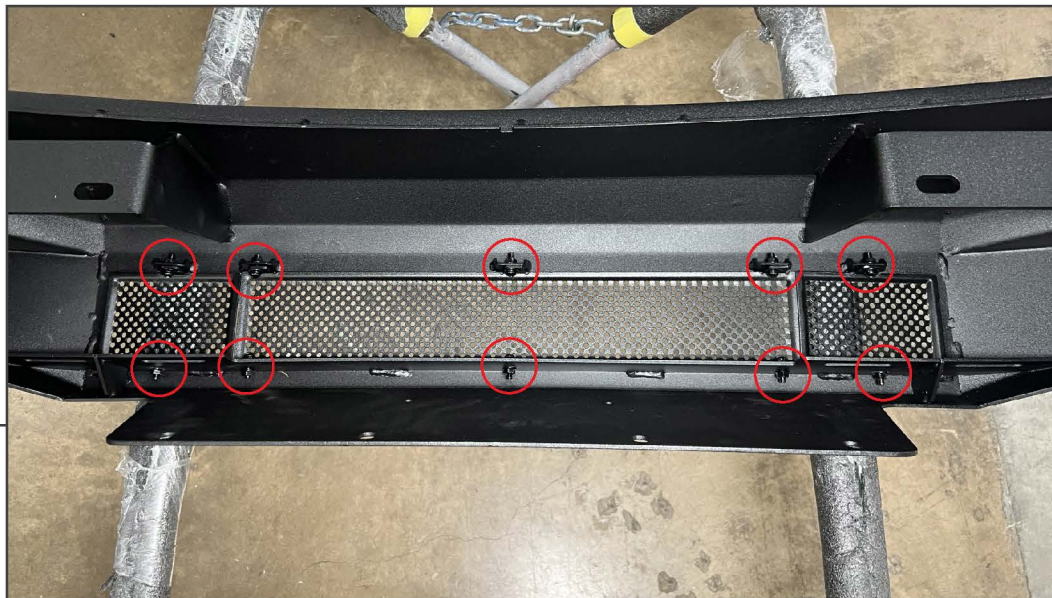
STEP 3

Un-fold the bumper end caps. Then, secure the end caps using (2) M10 x 30mm bolts, (2) M10 lock washers, and (2) M10 flat washers per end cap.

STEP 4

Secure the LED light enclosures to the bumper using (2) M6 combo Allen bolt per enclosure into the pre-installed threaded inserts in the bumper.

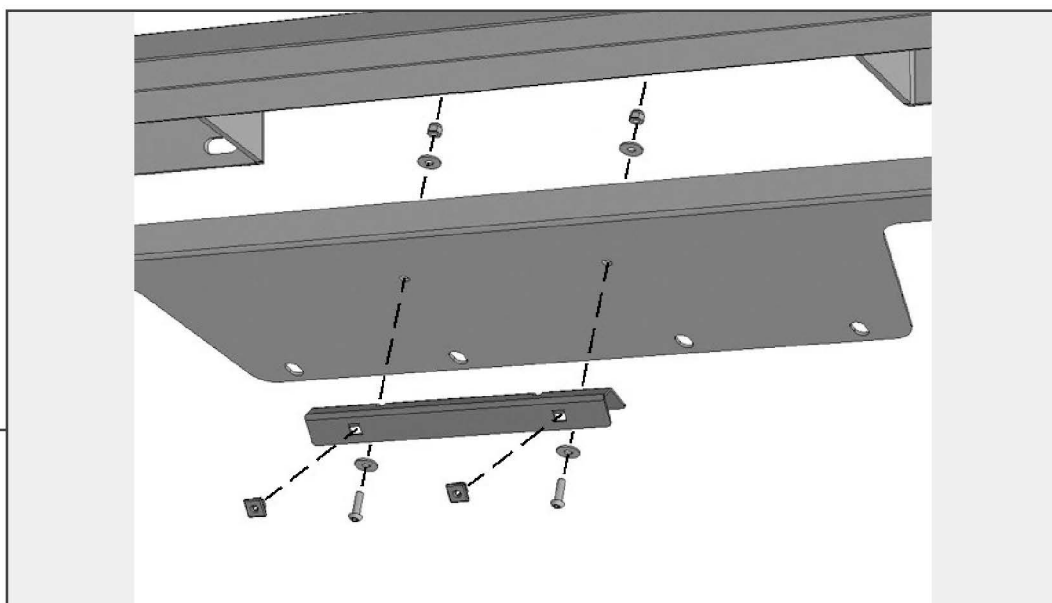
Assemble the LED light brackets to the LED lights using (2) M6 x 12mm cap Allen bolts and (2) M6 lock washers. Then, secure the included LED lights to each enclosure using (1) M8 x 30mm hex bolt, (1) M8 lock washer, (1) M8 flat washer, and (1) M8 nut included in the lighting kit.

**STEP 5**

Secure the LH, RH, and Center mesh panels to the bumper using (10) M6 x 20mm combo Allen bolts and (10) M6 flange nuts.

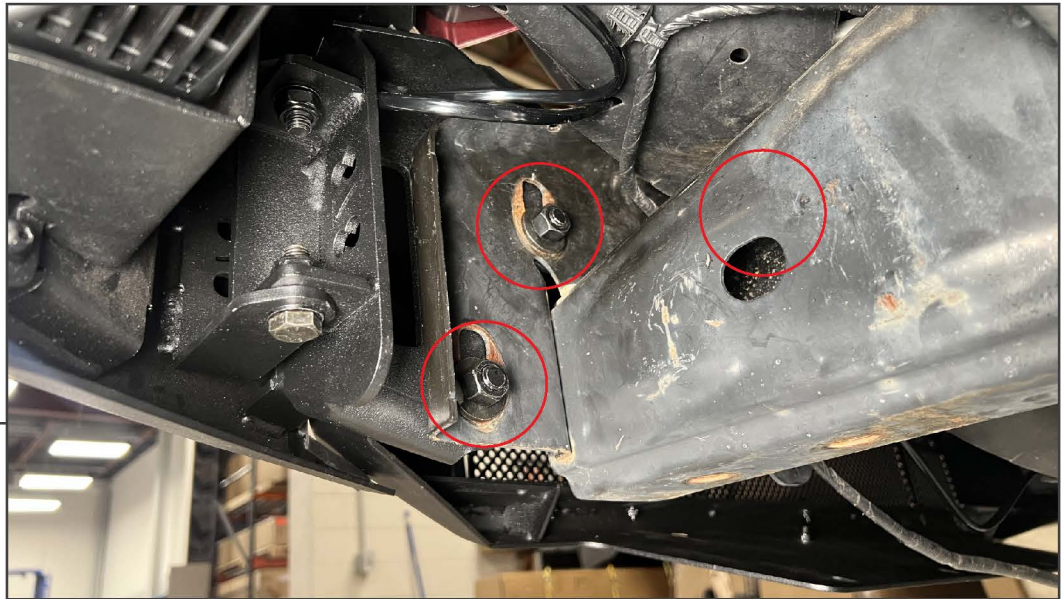
Note: Installing a light bar can be used instead of the grille panels using the included M8 hardware and “L” brackets. Light bar sold separately, SKU # T542547 [20”] OR T542548 [30”].

“L” Brackets: (2) M8 x 25mm Bolts, (2) M8 Lock Washers, (4) M8 Flat Washers, (2) M8 Nuts
Light Bar to “L” Brackets: (2) M8 x 16mm Bolts, (2) M8 Lock Washers, (2) M8 Flat Washers

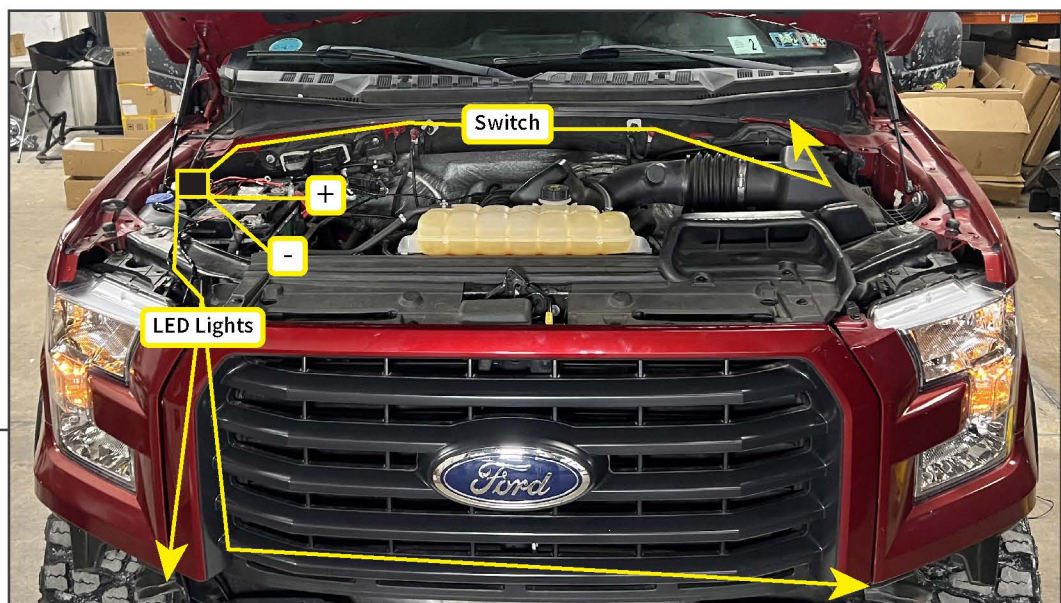
**STEP 6**

If desired, secure the front license plate mounting bracket to the bottom of the bumper using (2) M6 x 20mm Allen bolts, (4) M6 flat washers, and (2) M6 lock nuts. Then, fit the (2) square plastic screw retainers into the square holes in the bracket.

Use OEM license plate screws to secure the license plate to the bracket.

STEP 7

With a helper, lift the new bumper to the vehicle, and secure into place using (6) M12 x 35mm bolts, (6) M12 lock washers, (12) M12 flat washers, and (6) M12 nuts. Adjust the bumper to best fit the vehicle, and then tighten all hardware to fully secure the bumper into place.

STEP 8

Open the vehicle hood. Route the included LED light wiring harness throughout the engine bay following the diagram above. Ensure to route the harness away from any hot/moving components. Use the included (10) cable ties to ensure the harness is secure. Mount the relay to a suitable location in the vehicle engine bay.

Unplug the switch connector, and set the switch aside. Route the switch connector on the main harness towards the main firewall grommet below the brake master cylinder. Carefully cut a small slit in the grommet to allow for the switch connector to route into the vehicle interior.

STEP 9

Using the included double sided tape attached to the switch, fit the switch to the desired position on the dashboard. Route the harness towards the vehicle firewall grommet, and plug the connectors together. Ensure the harness is secure away from the steering/pedal assemblies.

- Connect the Red ring terminal lead to battery + terminal.
- Connect the Black ring terminal lead to battery - terminal.

Test the LED lighting at this time.

STEP 10

Installation is now complete.