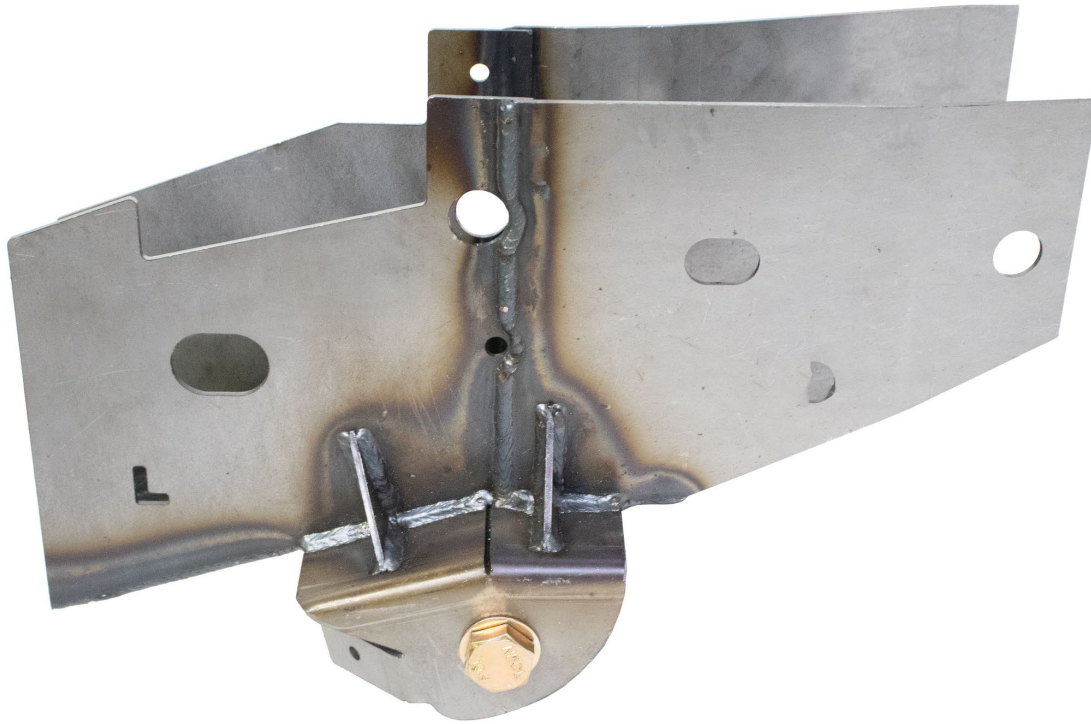




RUST BUSTER

RB7083L & RB7083R
Forward Leaf Spring Mount
2004-2008 Ford F-150 – Super Cab – 6.5' Bed



REQUIRED TOOLS

Jack Stands or Lift
Mig Welder
Paint/Primer
Hand Grinder
Cutting Wheel or Torch
Welding Gloves
Welding Hood/Shield
Ear & Eye Protection
Sockets & Ratchet
Fire Extinguisher
Hammer
Pliers

KIT CONTAINS

Leaf Spring Mount
M18 Hex Screw
M18 Hex Nut
M18 Flat Washer

QTY

1
1
1
2



RUST BUSTER

RB7083L & RB7083R
Forward Leaf Spring Mount
2004-2008 Ford F-150 – Super Cab – 6.5' Bed

1) **PREPARING YOUR VEHICLE**

Begin by disconnecting your battery prior to starting your installation.

Inspect your vehicle for leaking fuel lines, fuel tank and engine components. If you have fuel leaks repair all leaks prior to starting your installation. If your fuel tank is near your welding area **remove your tank prior to welding.**

Remove all combustible items above the work area such as seats, carpets, padding, etc.

Keep all flammable materials away from the vehicle work area.

2) **PREPARING YOUR WORKSTATION**

Keep a fire extinguisher close by in the case of fire and make sure you always have a designated "Fire Watch" to assist during the cutting or welding phases.

Abide by all apprenticed welding safety standards and practices.

Always use appropriate welding eye protection, ear protection, and work and fire safety gloves during the installation and within the work area.



WARNING!

If you are unsure on how to perform the installation or how to operate any of the required tools listed above, it is **HIGHLY** advised that you enlist the work of a certified welder/installer.

Failure to follow proper safety precautions and instructions may result in serious injury. **The user assumes all liability when installing the product.**



RUST BUSTER

RB7083L & RB7083R Forward Leaf Spring Mount 2004-2008 Ford F-150 – Super Cab – 6.5' Bed

3) PREPARING FOR YOUR INSTALL

Lift your vehicle and support your axle. Remove the vehicle's wheel, and remove the bolt securing the leaf spring to the mount. Push the leaf spring down and out of the way. You may need to work on both leaf springs at the same time to allow enough clearance for the installation.



Hold the part up to the frame and mark off its coverage. Measure $\frac{1}{4}$ " up from the bottom of the frame and mark off your cut line.



4) CUT

Begin cutting the mount off along your cut line.



Grind down the frame free of rust and debris, revealing bare metal.



Paint the part with a weld through primer to help prevent against rust development.





RUST BUSTER

RB7083L & RB7083R Forward Leaf Spring Mount 2004-2008 Ford F-150 – Super Cab – 6.5' Bed

5) **WELD**

Slide your leaf spring section onto the frame using the frame holes to help with the alignment.



Following proper welding procedures, tack weld the frame section to the frame. Confirm its fitment, and weld the part on fully. Weld 100% around all edges.



6) **PAINT AND PROTECT**

Coat the part and work area with a primer or other rust inhibitor to help prevent or reduce the risk of rust formation.

We recommend our Rust Buster Rust Converter & Primer Spray Paint (RB9917).



7) **REINSTALL**

Reinstall your leaf spring.
Reinstall your wheel.