



RUST BUSTER

RB7081

Fuel Tank Crossmember

2004-2008 Ford F-150 – Super Cab – 6.5' Bed



VIDEO AVAILABLE



REQUIRED TOOLS

Jack Stands or Lift
Paint/Primer
Cutting Wheel or Torch
Welding Gloves
Welding Hood/Shield
Ear & Eye Protection
Sockets and Wrench
Fire Extinguisher
Hammer
Hole Punch

KIT CONTAINS

Fuel Tank Crossmember
Support Plates
Shock Mount (Left/Right)
M10 Clip-on Nut
M8 Clip-on Nut
M10 Hex Bolt
M8 Hex Bolt
M12 Hex Bolt
M12 Lock Nut

QTY

1
4
1ea
1
1
1
1
2
2



RUST BUSTER

RB7081

Fuel Tank Crossmember

2004-2008 Ford F-150 – Super Cab – 6.5' Bed

1) PREPARING YOUR VEHICLE

Begin by disconnecting your battery prior to starting your installation.

Inspect your vehicle for leaking fuel lines, fuel tank and engine components. If you have fuel leaks repair all leaks prior to starting your installation. If your fuel tank is near your welding area **remove your tank prior to welding.**

Remove all combustible items above the work area such as seats, carpets, padding, etc.

Keep all flammable materials away from the vehicle work area.

2) PREPARING YOUR WORKSTATION

Keep a fire extinguisher close by in the case of fire and make sure you always have a designated “Fire Watch” to assist during the cutting or welding phases.

Abide by all apprenticed welding safety standards and practices.

Always use appropriate welding eye protection, ear protection, and work and fire safety gloves during the installation and within the work area.



WARNING!

If you are unsure on how to perform the installation or how to operate any of the required tools listed above, it is **HIGHLY** advised that you enlist the work of a certified welder/installer.

Failure to follow proper safety precautions and instructions may result in serious injury. **The user assumes all liability when installing the product.**



RUST BUSTER

RB7081

Fuel Tank Crossmember

2004-2008 Ford F-150 – Super Cab – 6.5' Bed

3) **PREPARING FOR YOUR INSTALL**

Lift up your vehicle. Remove any lines or power harnesses from the work area. Disconnect each shock from the factory mounts.



Clean and grind the work area free of rust and debris, revealing bare metal.

4) **CUT**

Begin by removing the crossmember by cutting the welds on the inside and outside of the crossmember that retain it to the frame rails. You may need to cut the crossmember in half to make it easier to remove.



Spray the work area with a weld through primer to help prevent against rust development.





RUST BUSTER

RB7081

Fuel Tank Crossmember

2004-2008 Ford F-150 – Super Cab – 6.5' Bed

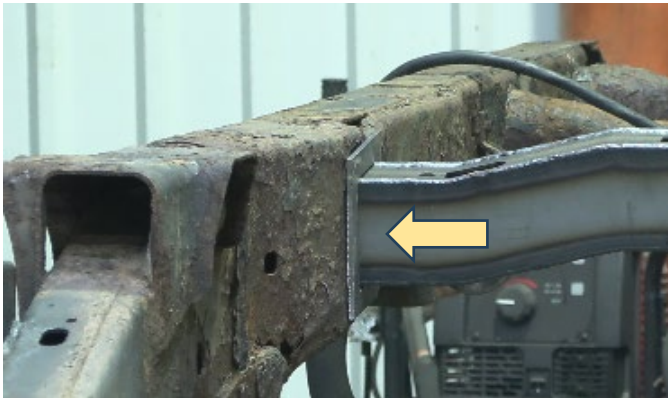
5) INSTALL

Slide (1) support plate onto each end of the crossmember, followed by inserting the crossmember into the frame's cut openings.



(Crossmember Orientation: See Front Page)

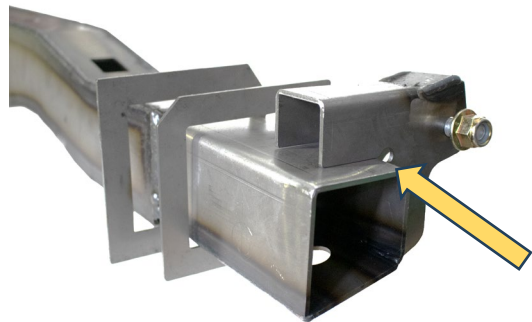
Slide the remaining support plates onto each end of the crossmember, and push each plate up to each rail, closing off any excess openings. Measure the amount of crossmember sticking out of each rail, and ensure that it is centered.



Tac weld the plates into place before fully welding the inside and outside edges to the crossmember and frame rails.



Place the included shock mounts onto the outside ends of the crossmember while leaving about a 1/8" space from the edge, followed by welding them into place. **Note: The shock mounts are driver and passenger specific. When pushed into place, they should tilt away from the frame.**



6) PAINT

Paint the part with primer or other rust inhibitor to help prevent or reduce the risk of rust formation.

We recommend our Rust Buster Rust Converter & Primer Spray Paint (RB9917).



RUST BUSTER

RB7081

Fuel Tank Crossmember

2004-2008 Ford F-150 – Super Cab – 6.5' Bed

