

LDS SERIES LED TAIL LIGHTS

(2015-2020 F-150 - WITHOUT OEM LED TAIL LIGHTS)

INSTALLATION INSTRUCTIONS

CONTENTS

- (1) LH Tail Light
- (1) RH Tail Light
- (2) 2015-2017 Harness Adapters
- (2) Resistor Brackets
- (4) Vampire Clips
- (4) M4 Bolts
- (4) M4 Nuts

TOOLS REQUIRED

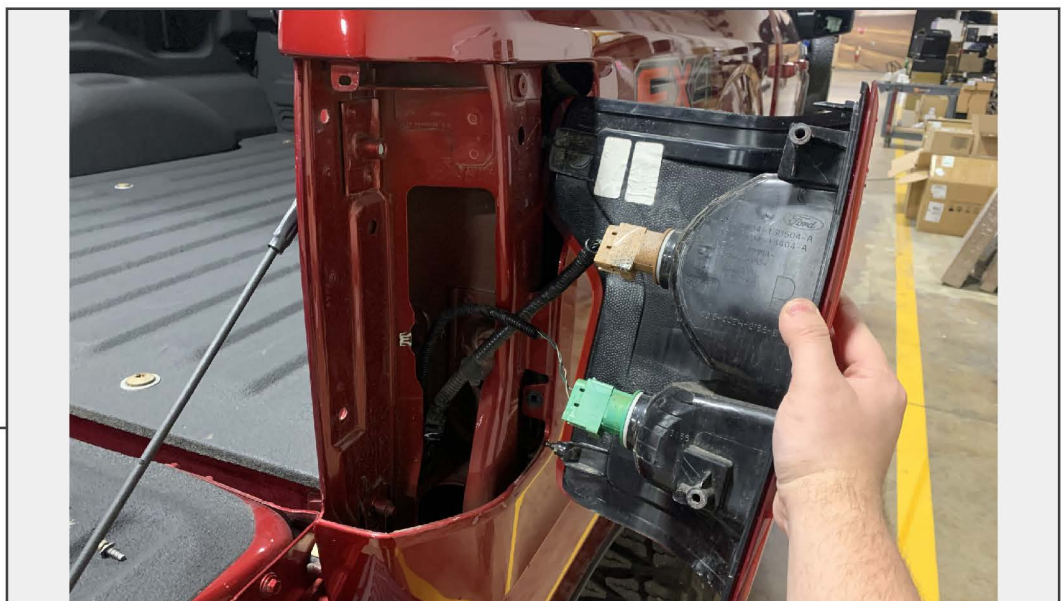
- 8mm Socket
- Ratchet
- Pliers
- Phillips Screwdriver

STEP 1



Lower the vehicle tailgate and remove (2) 8mm bolts from the tail light assembly.

STEP 2



Firmly pull the tail light rear-wards to dislodge the (2) alignment pins in the vehicle bed.

2015-2017 Model Year: Unplug the (2) electrical connectors from the tail light assembly.

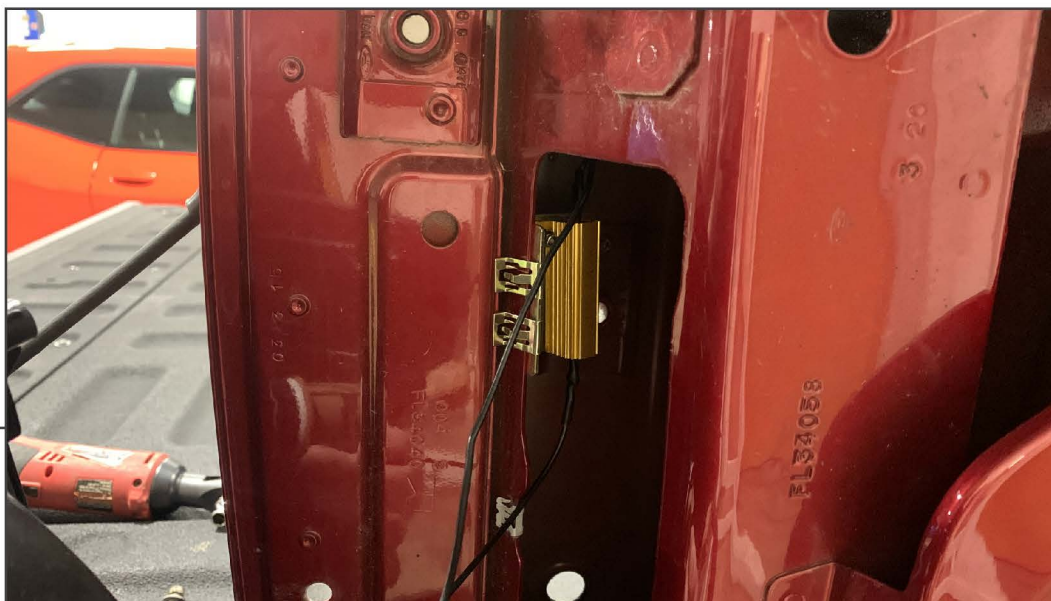
2018-2020 Model Year: Unplug the (1) electrical connector from the tail light assembly.

STEP 3



Secure the resistor to the resistor bracket using (2) M4 bolts and (2) M4 nuts. Tighten the hardware until secure.

STEP 4



Using (2) vampire clips, secure the resistor bracket to the inside of the tail light area of the vehicle. Ensure the resistor is placed away from the tail light wiring connector(s).

STEP 5



2015-2017 Model Year Only: Plug in the included adapter harness into the corresponding vehicle tail light connector.

Align the new tail light to the vehicle and plug in the wiring harness to the vehicle harness. Fit the tail light to the vehicle bed, ensuring to align all mounting points before firmly pressing into place. Secure the tail light to the bed using the original (2) 8mm screws.

STEP 6



Repeat Steps 1-5 to the opposite side of the vehicle.

Installation is now complete.