

LDS SERIES LED TAIL LIGHTS

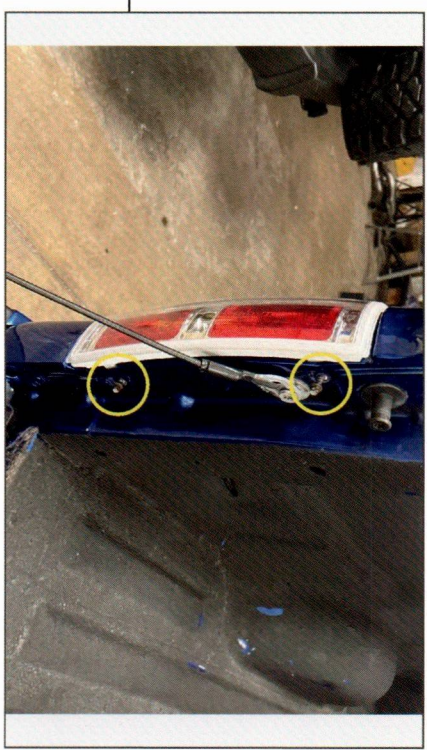
(2009-2014 F-150)

INSTALLATION INSTRUCTIONS

CONTENTS	TOOLS REQUIRED
(1) LH Tail Light	8mm Socket
(1) RH Tail Light	Ratchet
(4) Resistor Brackets	Pliers
(8) Phillips Bolts	Phillips Screwdriver
(8) Lock Nuts	
(8) Vampire Clips	

SKU # T625922

STEP 1

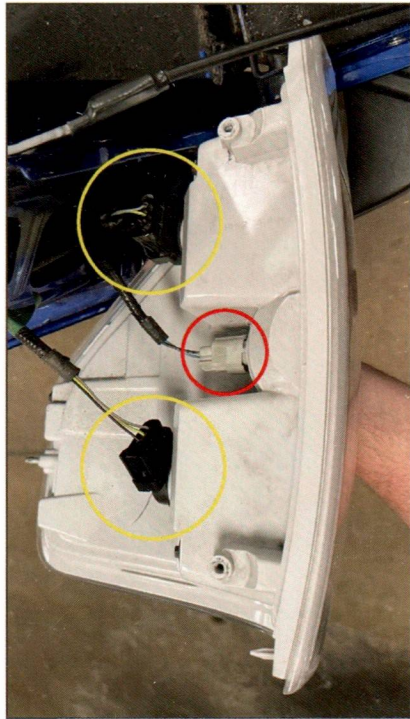


Lower the vehicle tailgate. Locate and remove (2) 8mm screws from the tail light.

STEP 2



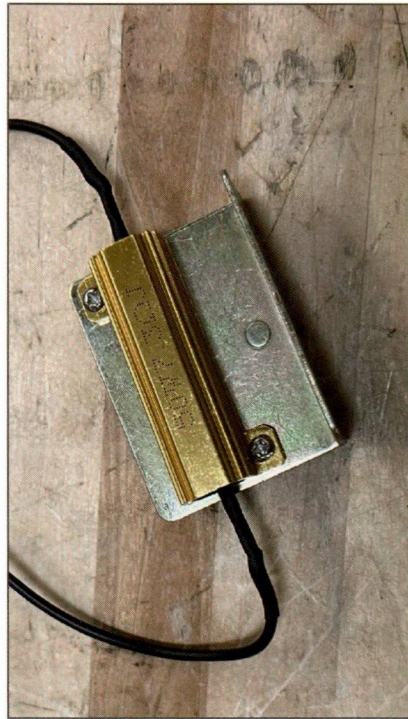
Firmly pull the tail light away from the bed to dislodge the (2) alignment posts.
If the rubber alignment pin holders come out of the bed with the alignment post, remove the holders and re-install into the bed.



STEP 3

Unplug the (2) tail light connectors by pressing the black tab while pulling the harness from the light socket.

Twist the reverse light socket counter-clockwise to remove the socket with bulb from the tail light.



STEP 4

Fit the included resistor brackets to each tail light resistor, and secure into place using (2) Phillips bolts and (2) lock nuts per bracket.



STEP 5

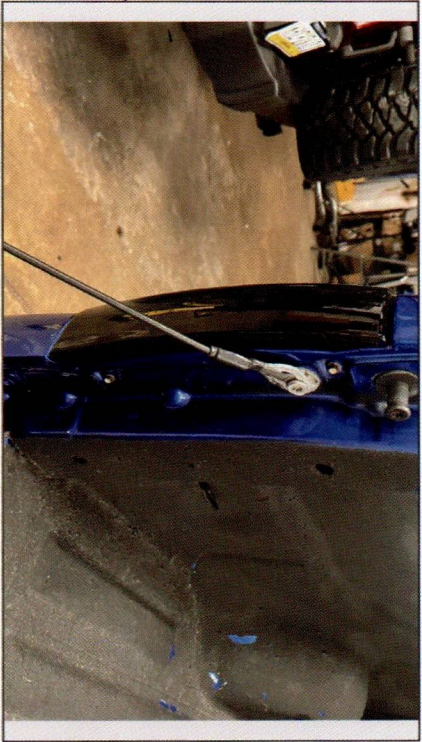
Use the included vampire clips to secure the resistor and bracket to the vehicle, use (2) clips per resistor.



STEP 6

Fit the reverse light socket into the tail light, and turn clockwise until seated in the light housing.

Plug in the (2) tail light connectors into the new tail light harnesses.



STEP 7

Fit the new tail light into the vehicle bed, and secure into place using the original (2) 8mm screws. The screws will create threads in the new tail light housing when tightening.



STEP 8

Repeat Steps 1-7 to install the remaining LED tail light.

Installation is now complete.