



---

# ACCESS POWER RUNNING BOARDS

(2015-2025+ F-150 SUPERCREW CAB)  
(2017-2025+ F-250 / F-350 SUPERCREW CAB)

---

## INSTALLATION INSTRUCTIONS

### CONTENTS

---

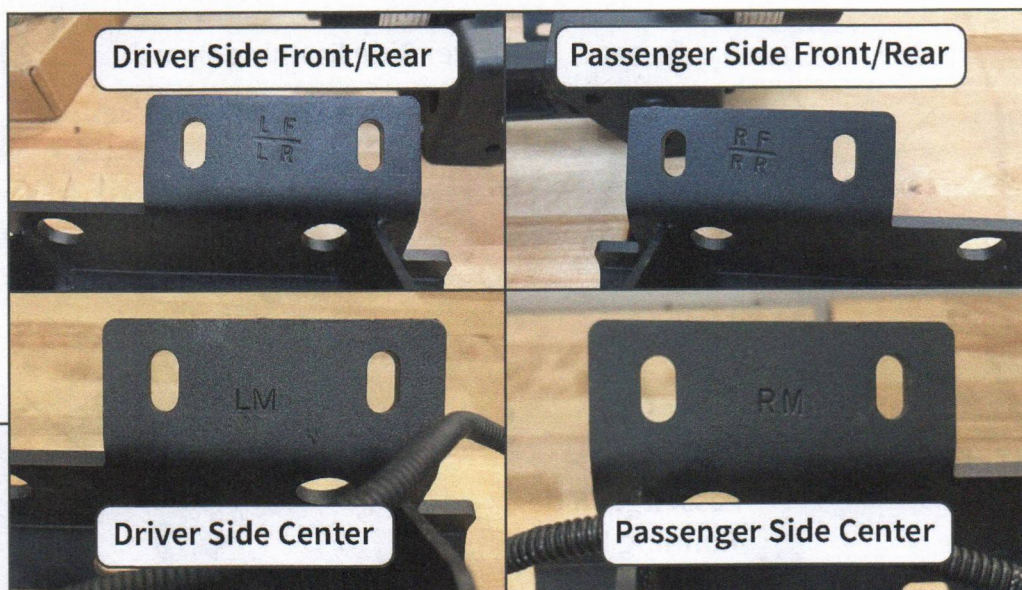
- |   |   |
|---|---|
| (1) LH Running Board                    | (1) Control Module w/ M6 Hardware       |
| (1) RH Running Board                    | (1) Wire Harness Fishing Lead           |
| (2) LH Front/Rear Mounting Brackets     | (6) Wire Retainers w/ 6 Phillips Screws |
| (1) LH Center Mounting Bracket w/ Motor | (18) M8x1.25 Flange Nuts                |
| (2) RH Front/Rear Mounting Brackets     | (18) M8 Lock Washers                    |
| (1) RH Center Mounting Bracket w/ Motor | (18) M8 Flat Washers                    |
| (1) Main Wiring Harness                 | (10) Mounting Shims                     |
| (4) Door Switches w/ Magnets            | (20) Cable Ties                         |
| (1) LH Motor Harness Lead               |   |
| (1) RH Motor Harness Lead               |   |

### TOOLS REQUIRED

---

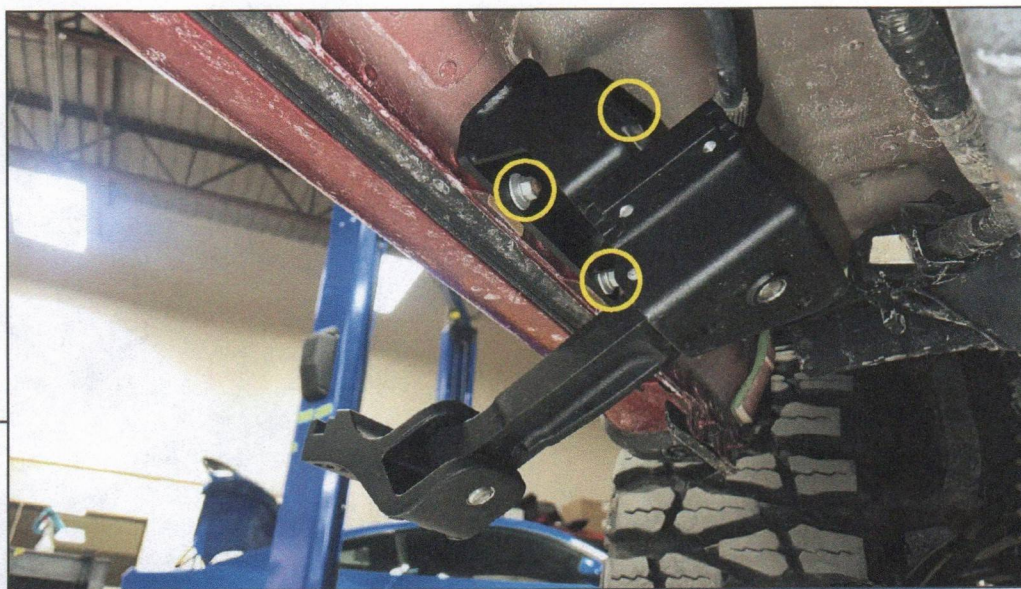
- 13mm Wrench/Socket
- 6mm Allen Socket/Key
- Ratchet
- Phillips Screwdriver
- Plastic Pry Tool
- Electrical Tape
- Razor Knife

SKU # T626637 / T626638

**STEP 1**

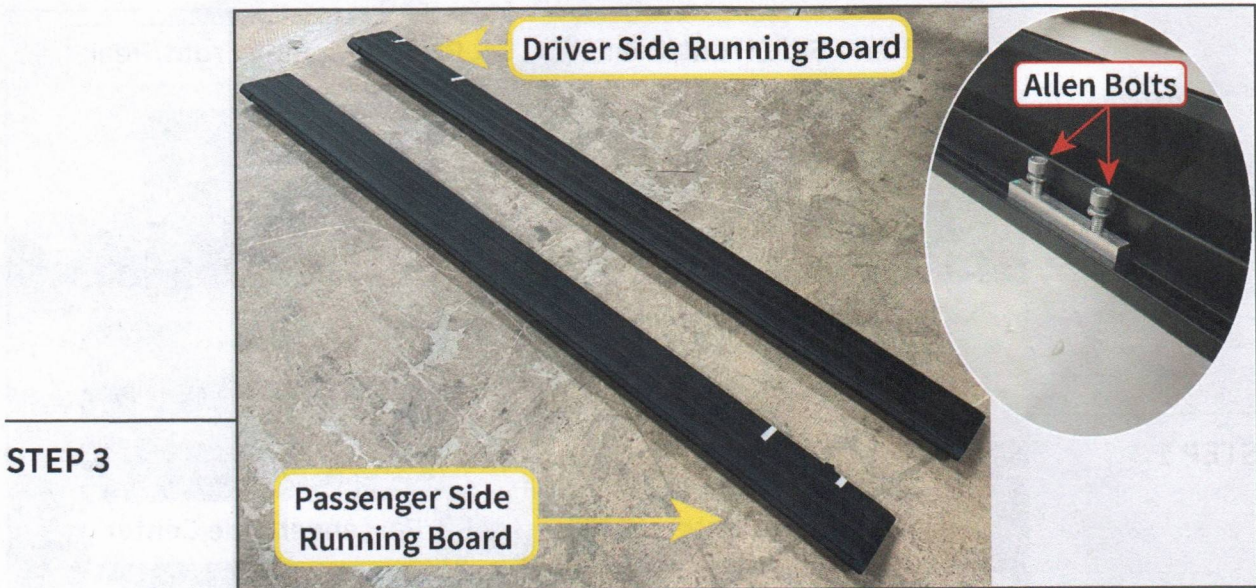
Lay out and identify all components. Identify the LH/RH, as well as Front/Rear mounting brackets using the diagram above.

The bracket will bolt directly to the vehicle mounting points.

**STEP 2**

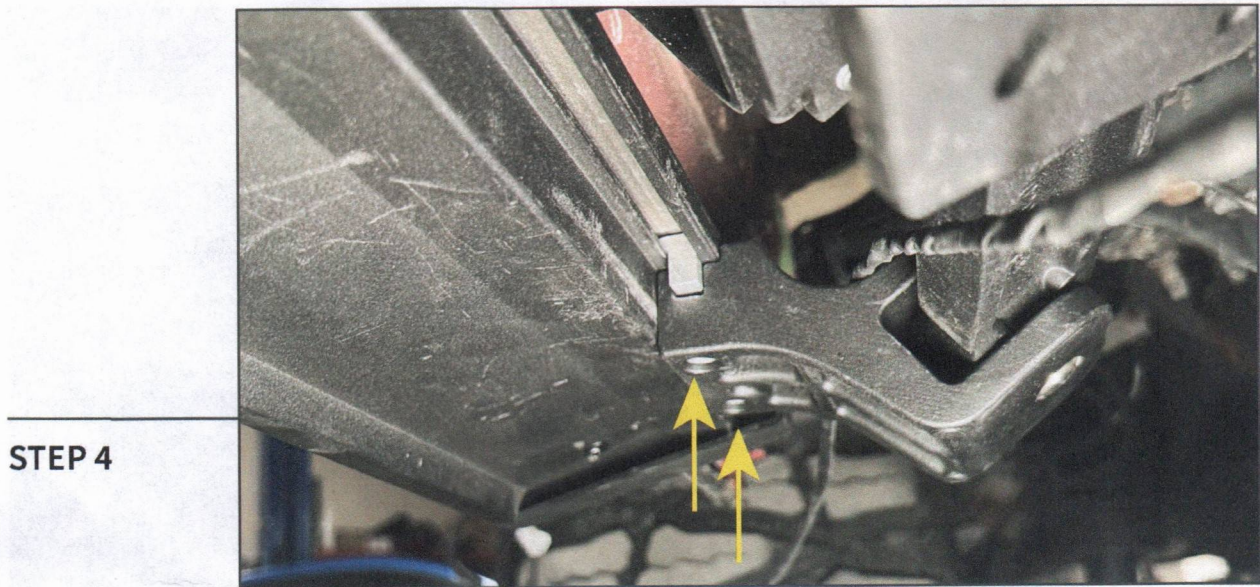
Using the included (3) M8 flange nuts, (3) M8 lock washers, and (3) M8 flat washers, loosely secure each mounting bracket to the vehicle M8 mounting studs in the vehicle rocker panels. Allow the brackets to remain loose to allow for adjustability later.

Note: Do not force the center mounting bracket to fold down. The running board will mount to the brackets in the folded up position.

**STEP 3**

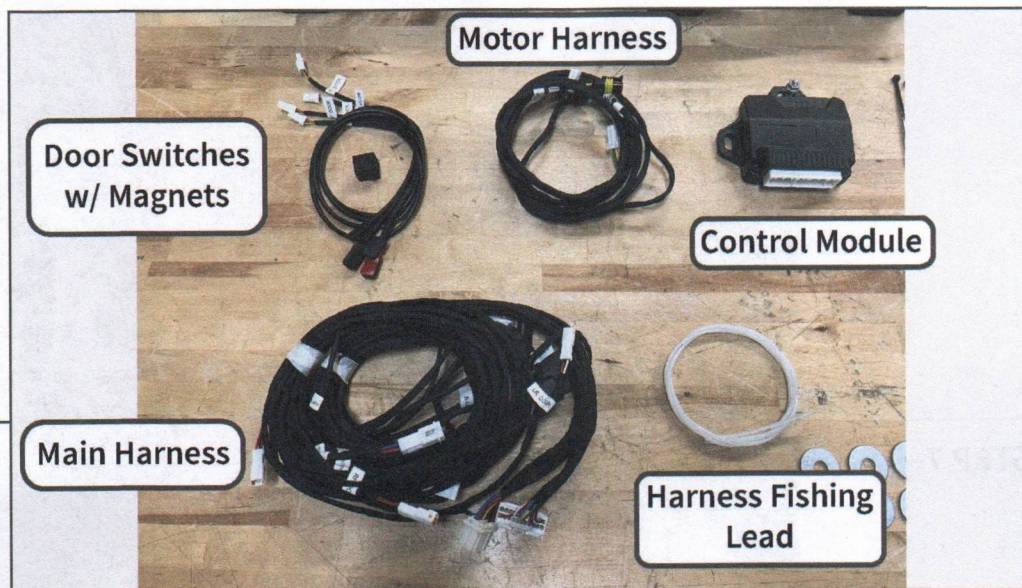
Lay out and identify the running boards. Each running board is side specific. The side of the running board with the wire leads will fit towards the front of the vehicle.

Remove the pre-installed (6) Allen bolts from the sliding mounting blocks.

**STEP 4**

With a helper, fit the running board to the mounting brackets. Align the sliding mounting blocks on the running board into the mounting bracket, and loosely secure using the previously removed (6) Allen bolts. The running board can be adjusted to best fit the vehicle. Adjust as necessary for best fit and tighten the Allen bolts. The running board LED wiring will be close to the center mounting bracket.

If necessary, the (10) M8 shims can be used between the body and the mounting brackets to space the running board mounting brackets away from the body to allow better fitment.

**STEP 5**

Lay out and identify the wiring components. Each connector of the harness is labeled for the specific mounting point on the vehicle.

When routing each wire lead, take your time to neatly route each wire lead. This is crucial to proper harness fitment.

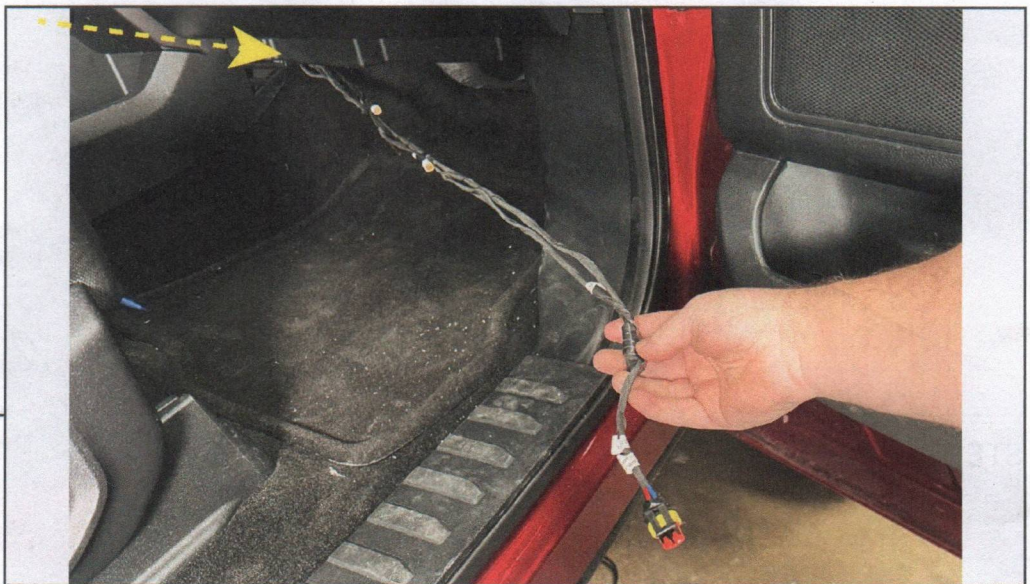
**STEP 6**

Using a panel removal tool, lift the door entry panel from the vehicle and set aside. Repeat this step for the remaining (3) vehicle door entry panels.

The trim panels are only secured using press-in metal clips. Moderate force will be required to dislodge the panel from the body.

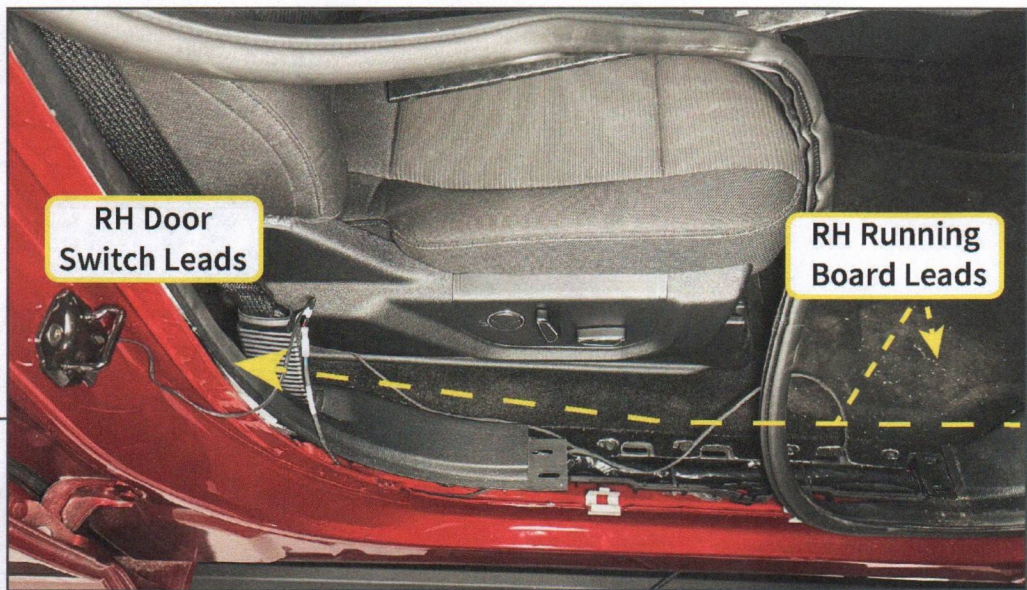
**STEP 7**

Behind the front running board mounting brackets, locate the rubber grommets in the floorboards on each side of the vehicle. Cut a small 'X' in the grommets to allow the door switch wiring leads to route into the vehicle interior. The running board wire leads will route through these grommets.

**STEP 8**

Begin with the main wiring harness on the driver side of the vehicle. Route the RH labeled wire leads along the vehicle floor behind the dashboard.

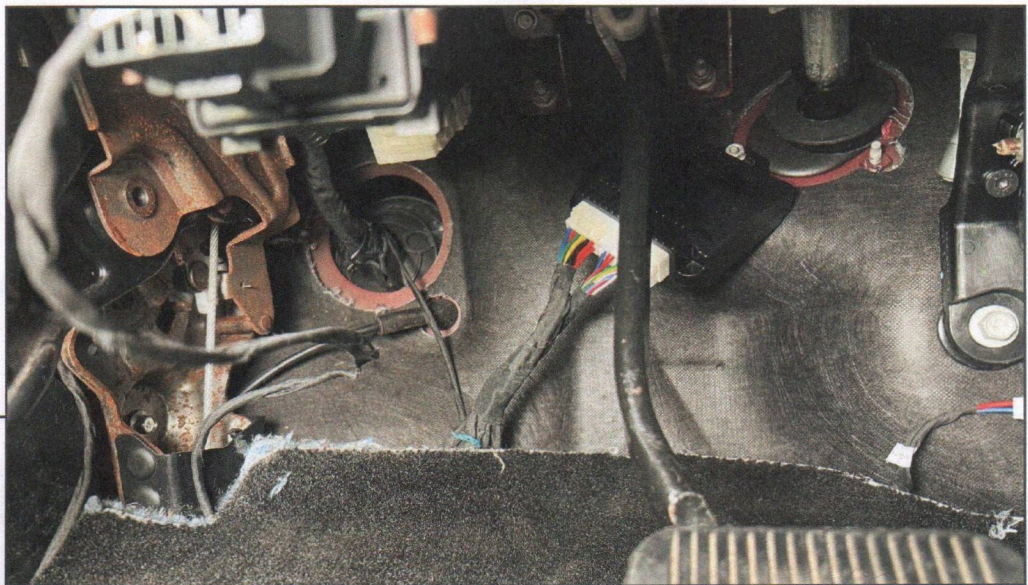
For easiest routing method, push the included (1) harness fishing lead from the passenger side of the dashboard to the driver side of the dashboard. Once the fishing lead is accessible on the driver side, use electrical tape to secure the RH wire leads to the fishing lead, and then pull the fishing lead towards the passenger side to pull the wire leads.

**STEP 9**

Pull the door entry weatherstripping upwards to gain access below the trim panels. Neatly route the wiring harnesses under the carpet.

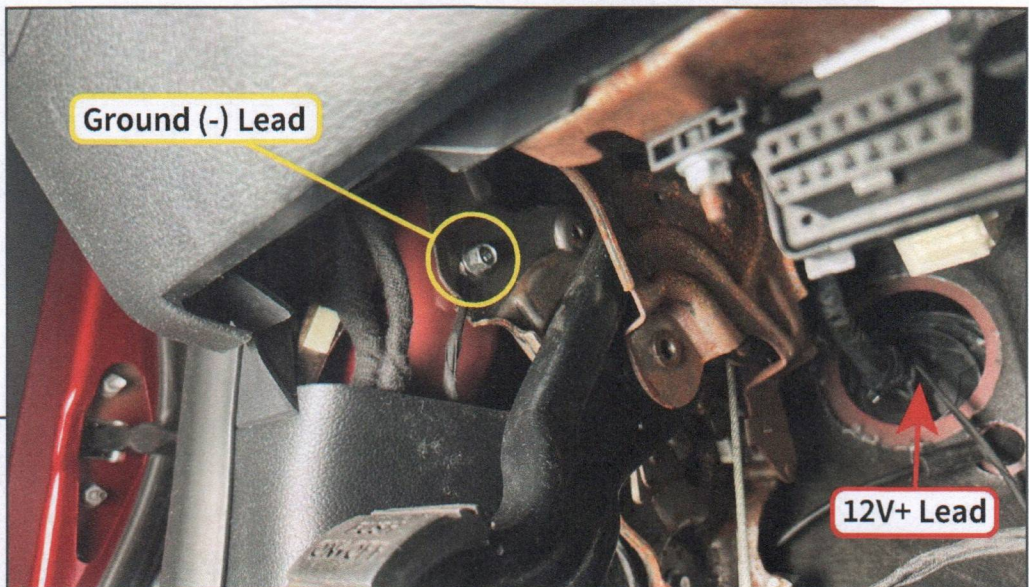
- Route the door switch wire leads to the appropriate door along the B-Pillar. Both of the RH side magnet switches will secure to the B-Pillar.
- Route the running board power leads through the floorboard grommet.

Repeat this step on the driver side of the vehicle once the passenger side is fully routed.

**STEP 10**

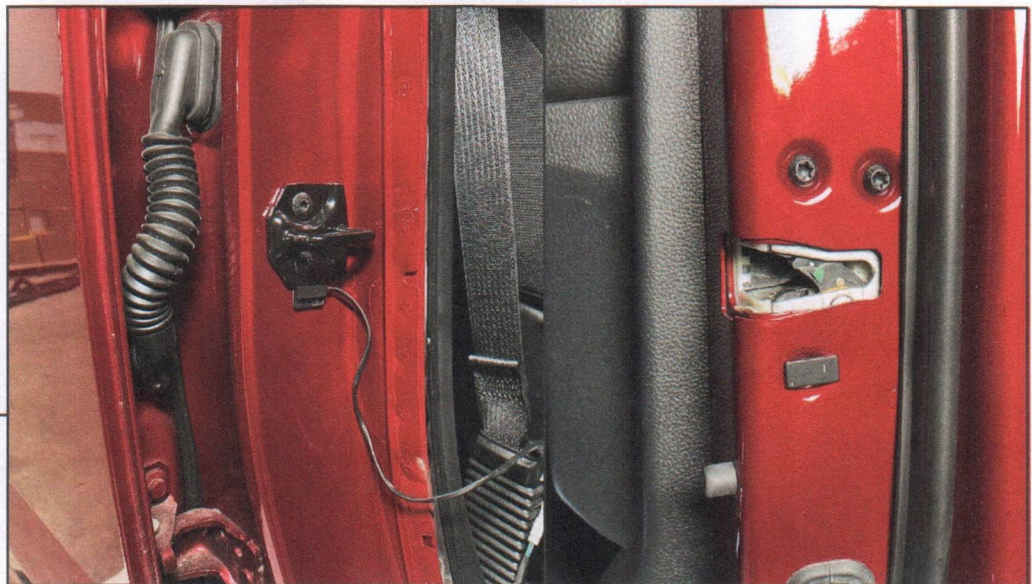
Under the dashboard, secure the module to the vehicle steering shaft stud using the module pre-installed M6 flange nut.

Cut a small slit in the firewall grommet to prepare for the 12V+ wire lead routing to the battery.

**STEP 11**

-Route the 12V+ lead through the previously cut firewall grommet. Then, plug in the fused section of the lead, and route the lead to the battery.

-Route the Ground lead to the vehicle parking brake along the floor. Loosen (1) 10mm bolt, fit the terminal connector into the bolt, and tighten the bolt into place.

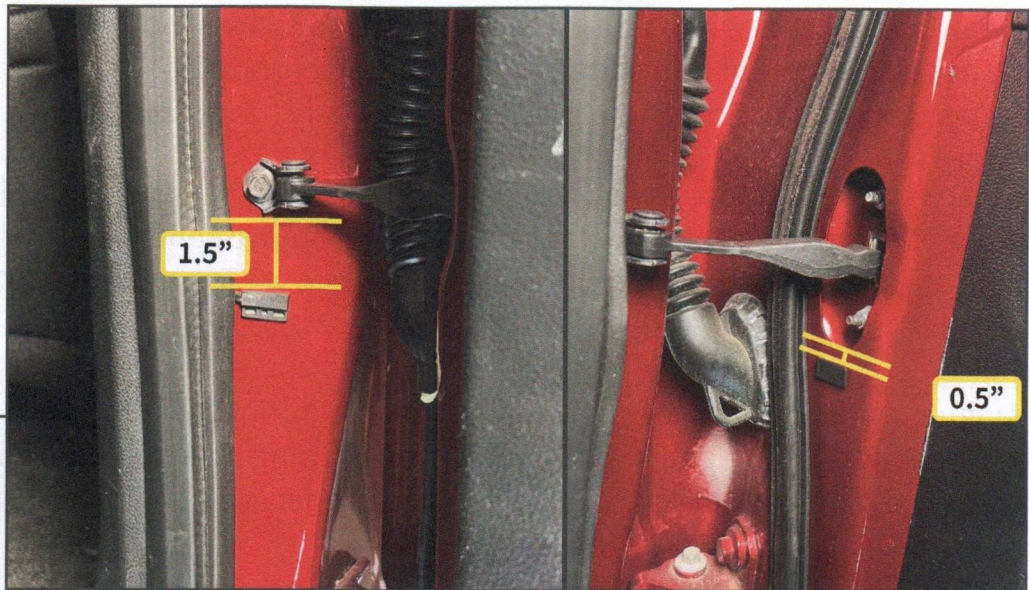
**STEP 12**  
**[Front Door]**

Clean the vehicle door opening under the striker & the vehicle door under the latch assembly using (1) alcohol prep pad, and allow to fully dry.

**Door Switch:** Peel the tape backing, and adhere the switch to the door under the striker.

**Magnet:** Peel the tape backing, and adhere the magnet to the lower bolt on the door latch.

Plug in the door switch, and re-install the weatherseal and door sill trim to the door opening.

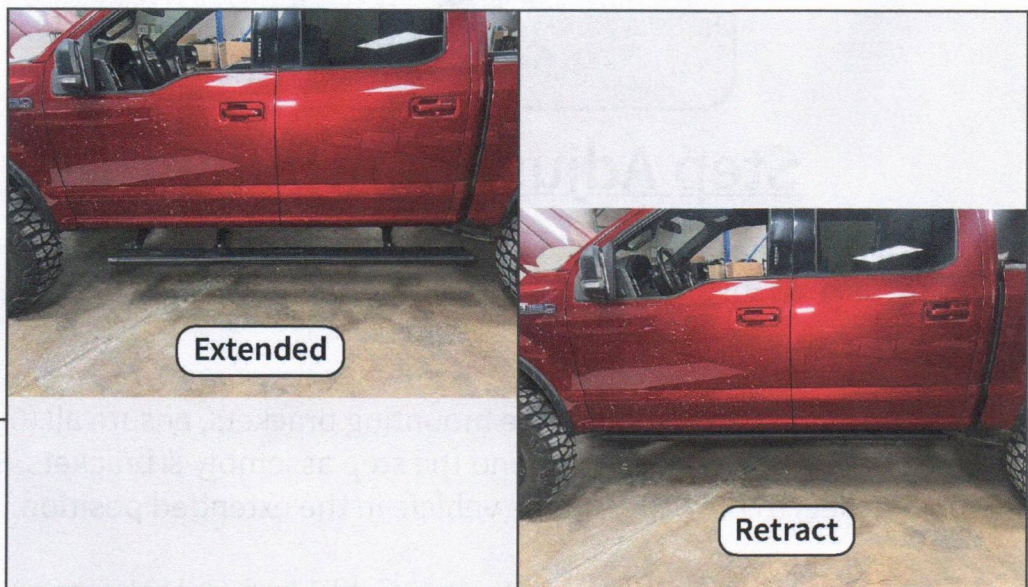
**STEP 13**  
[Rear Door]

Clean the vehicle door opening & vehicle door under the door limiting bar using (1) alcohol prep pad, and allow to fully dry.

**Door Switch:** Peel the tape backing, and adhere the switch 1.5" under the door limiting bar.

**Magnet:** Peel the tape backing, and adhere the magnet 0.5" below the door limiting bar cutout.

Plug in the door switch, and re-install the weatherseal and door sill trim to the door opening.

**STEP 14**

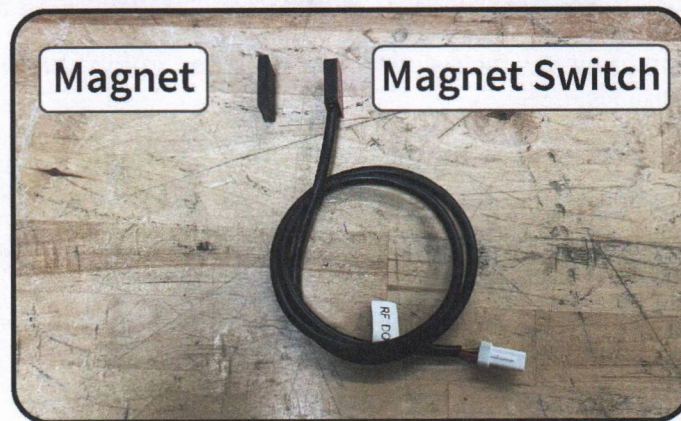
Connect the 12V+ wire lead to the Positive (+) battery terminal. Test each door to ensure side step functionality. Route all wiring using the included cable ties and wire retainers.

Installation is now complete.

# Installation Notes

## Magnet Switches

- With the magnet switches plugged into the main harness, the step assembly will extend downwards. The steps will retract to the vehicle body when the magnets meet the switches.  
Magnet & Switch Together = Step Retract to Body (Door Closed)  
Magnet & Switch Apart = Step Extended from Body (Door Open)
- If the magnets & switches are not properly aligned, the step assembly will remain in the extended position even with the doors closed. The step assembly will retract when all magnets align to each switch on the same side of the vehicle with the entire step harness plugged in.
- The magnet switches may need slight adjustments during installation. It is recommended to install the switches & magnets to the vehicle body using masking tape initially, and then testing the step functionality to ensure proper magnet switch alignment before permanently adhering the magnets and switches to the vehicle.



## Step Adjustment/Alignment

- Aligning the step/brackets is critical for motor life. The following steps will ensure the brackets are aligned for smooth motor operation. Failure to do so can cause premature motor failure.
- During the side step installation to the mounting brackets, ensure all (6) Allen bolts are loose, and then open the door to extend the step assembly & brackets. Slide the assembly along the brackets to best align to the vehicle in the extended position.
- Close the vehicle door to retract the step assembly, but while the step is retracting, assist the step into position while pushing/pulling the step to ensure the mounting points are fully engaged in each bracket. Occasionally, the step assembly needs these adjustment to fully seat to provide smooth movement.
- Once the step is fully seated into the vehicle brackets, fully tighten the (6) Allen bolts.