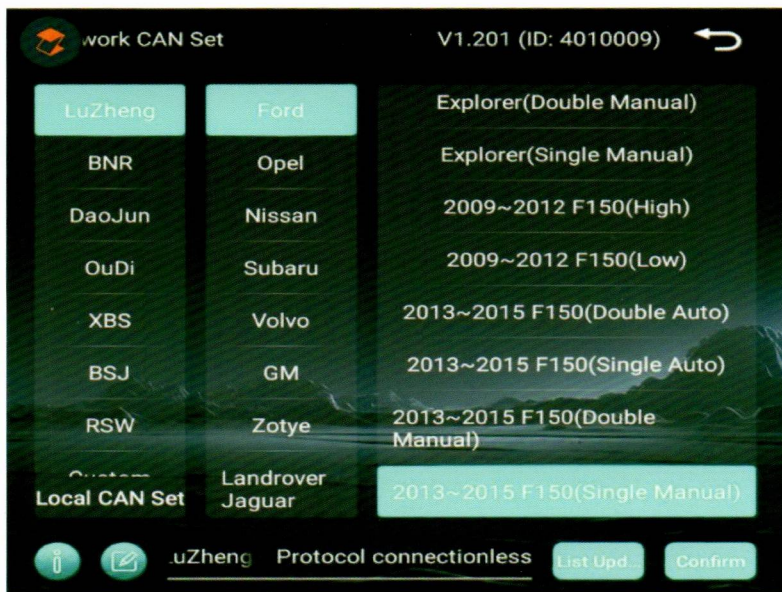
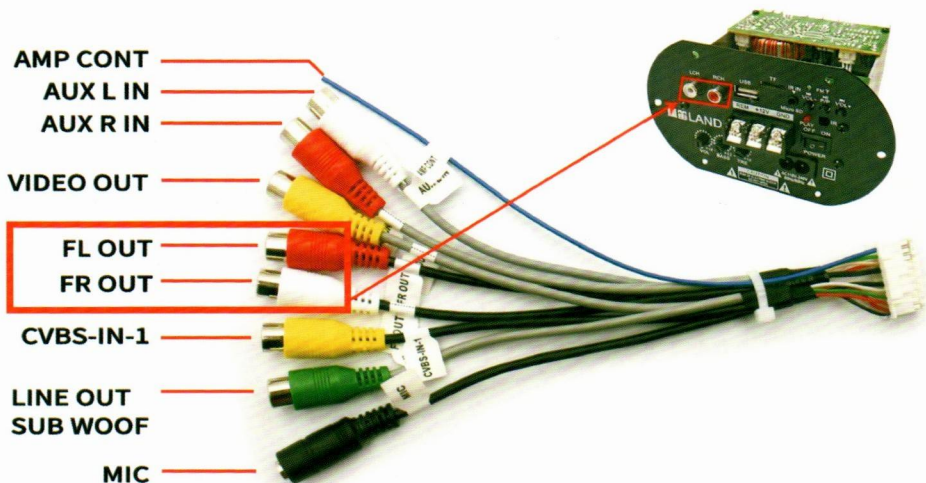


## ■ Canbus setting

Please connect wifi to your radio. Then go to setting---factory setting(password 8888)---canbus setting. Press list update, then choose from Luzheng--Ford--2013-2015 F150  
There are 4 options in 2013-2015 F150, please select based on your car AC Type.



## ■ RCA Jacks



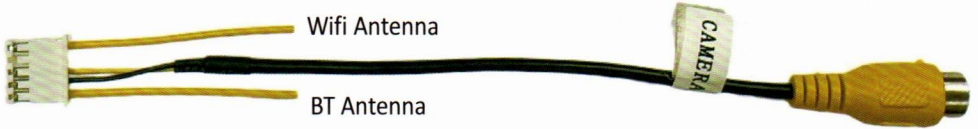
If you need Tech Support or have any question with the Device, please connect us

Email: [ustopdisplay@gmail.com](mailto:ustopdisplay@gmail.com) TEL: 5857107939

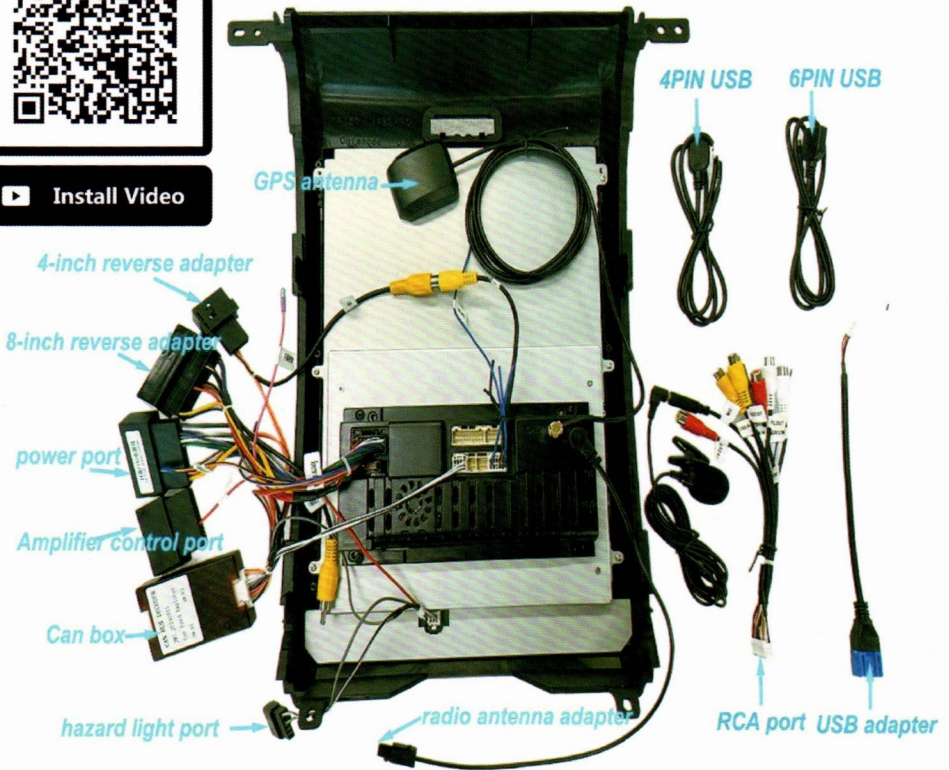
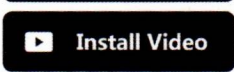
For Ford F150 2013-2014 models

## Important

- This is the reverse camera signal wire. It has the bluetooth and Wifi antenna on it.  
**So MUST CONNECT IT TO RADIO**, to have better performance for BT and Carplay/AA.



## ■ Wire Diagram



For original 4inch and 8inch will need to use different adapter for OEM camera

If you need Tech Support or have any question with the Device, please connect us

Email: [ustopdisplay@gmail.com](mailto:ustopdisplay@gmail.com) TEL: 5857107939