

PLEASE NOTED:

REMOVE POWER CONNECTION BEFORE START THE INSTALLATION.

**If you are not familiar with the radio, please find a professional car shop for installation.**



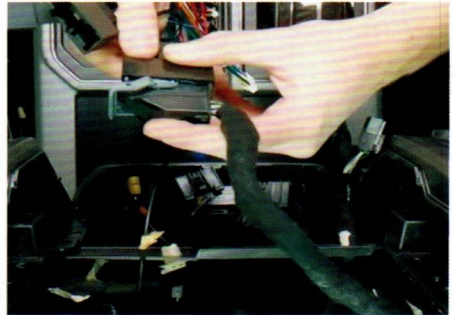
Use Pry tool remove the top cover and remove 4screws, then use Pry tool to remove all front Cover.



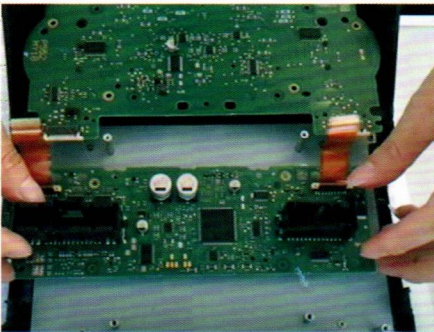
Remove the display but the green marked control unit must keep where it is.



Remove the harness on back of the display.



Connect it with main wire come in package.



Fix the Climate control panel on new stereo.



Connect the climate control harness back to control panel.

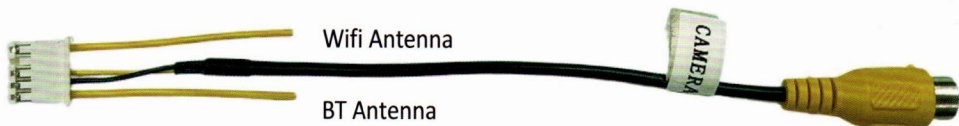
If you need Tech Support or have any question with the Device, please connect us

Email: [ustopdisplay@gmail.com](mailto:ustopdisplay@gmail.com)

Tel: 5857107939

## Important

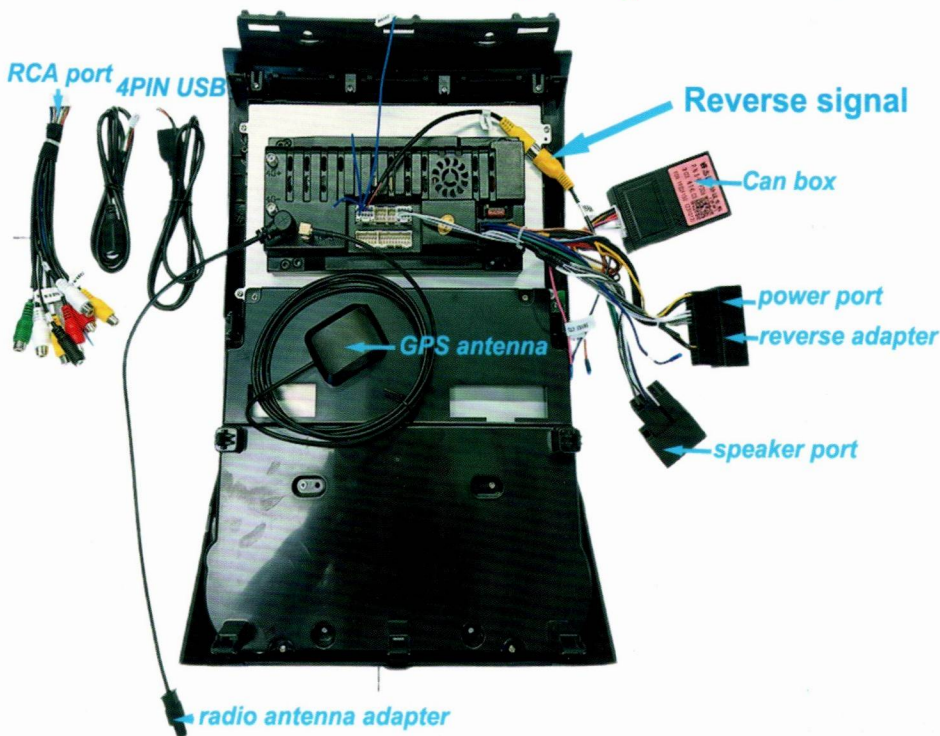
- This is the reverse camera signal wire. It have the bluetooth and Wifi antenna on it.  
**So MUST CONNECT IT TO RADIO**, to have better performance for BT and Carplay/AA.



- Wire Diagram

If your car is 2019-2020 or 2015-2018 with B/O AMP, please use this set of wire.

**Please set the volume on the max with your original radio before install.**



If your car is 2019-2020 or your car have B/O or OEM amplifier. Please use this set of wire harness. And need to select the canbus protocol  
Go to setting---factory setting(password 8888)--canbus setting--Raise--Ford--2019 F150

If you need Tech Support or have any question with the Device, please connect us

Email: [ustopdisplay@gmail.com](mailto:ustopdisplay@gmail.com) Tel: 5857107939

REMOVE POWER CONNECTION BEFORE START THE INSTALLATION.

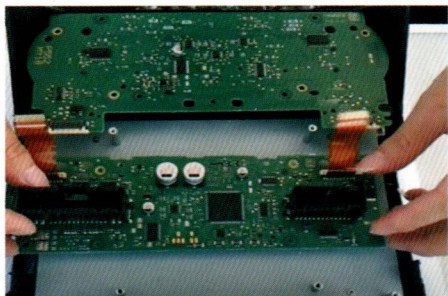
If you are not familiar with the radio, please find a professional car shop for installation.



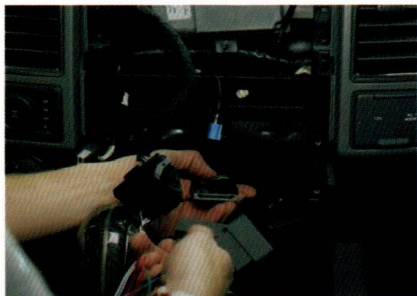
Use Pry tool remove the top cover and remove 4screws, then use Pry tool to remove all front Cover.



Remove the display and CD player.



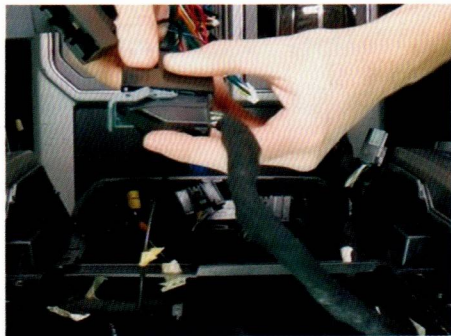
Fix the Climate control panel on new stereo  
It is the harness from the back of CD player.



Connect the main harness to get power,  
It is the harness from the back of CD player



Factory back camera for 4inch and 8inch are different, please use the corresponding wire to connect the harness behind old screen.

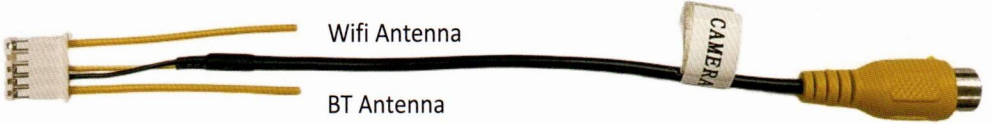


If you need Tech Support or have any question with the Device, please connect us

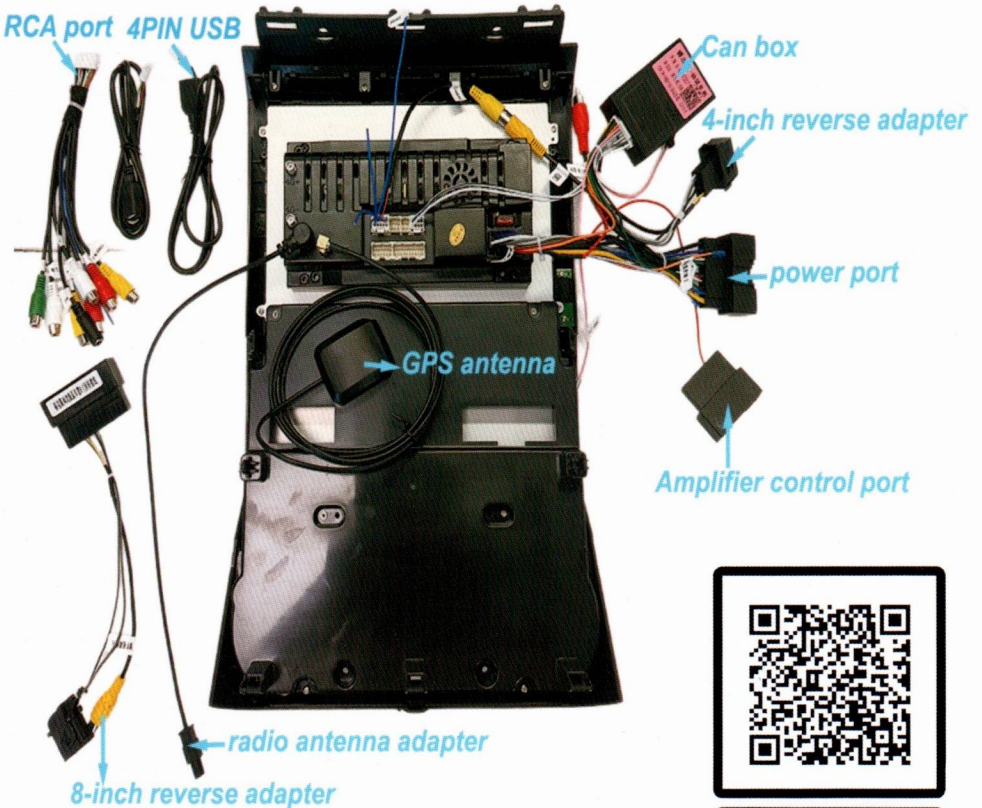
Email: [ustopdisplay@gmail.com](mailto:ustopdisplay@gmail.com) Tel: 5857107939


# Important

- This is the reverse camera signal wire. It have the bluetooth and Wifi antenna on it.  
**So MUST CONNECT IT TO RADIO**, to have better performance for BT and Carplay/AA.



- Wire Diagram (Note: B/O amplifier not included)



 **Install Video**