



---

# DUAL EXHAUST SYSTEM

(2004-2008 F-150)

---

## INSTALLATION INSTRUCTIONS

### CONTENTS

---

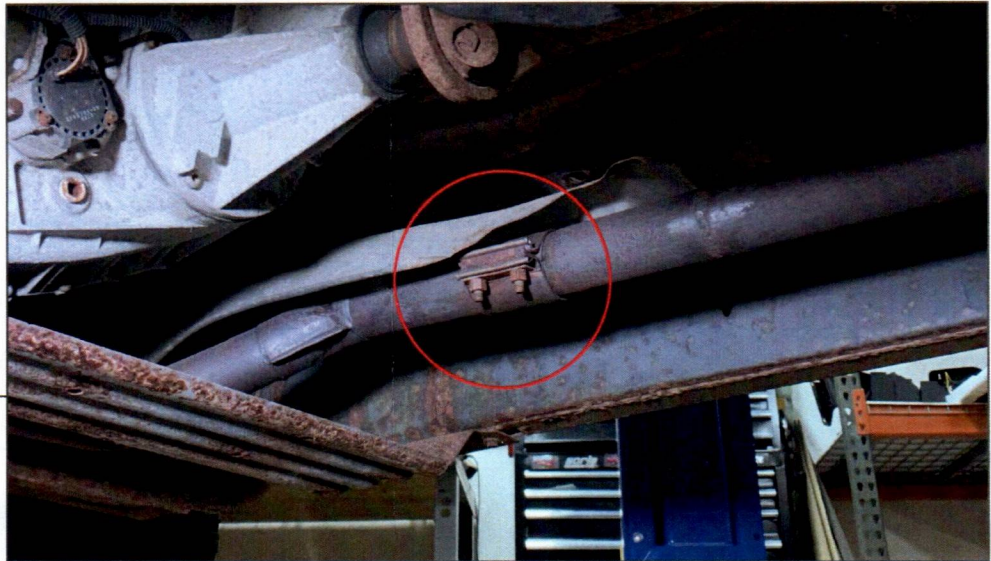
- (1) Front Pipe
- (1) Intermediate Pipe
- (1) Muffler
- (1) RH Over Axle Pipe
- (1) LH Over Axle Pipe
- (1) LH Exit Pipe
- (2) Rear Exit Pipes
- (2) Side Exit Pipes
- (2) Exhaust Tips w/ Clamps
- (1) Hanger Clamp
- (1) Hanger Bracket
- (1) Rubber Hanger
- (1) 5/16-18 x 1.25" Bolt
- (1) Lock Washer
- (2) Flat Washers
- (2) Star Washers
- (1) 5/16-18 Nut
- (2) 3" Exhaust Clamps
- (6) 2.5" Exhaust Clamps

### TOOLS REQUIRED

---

- 10mm, 15mm Sockets
- Ratchet
- Spray Lubricant
- Floor Jack & Jack Stands
- Magnet Tool
- Reciprocating Saw

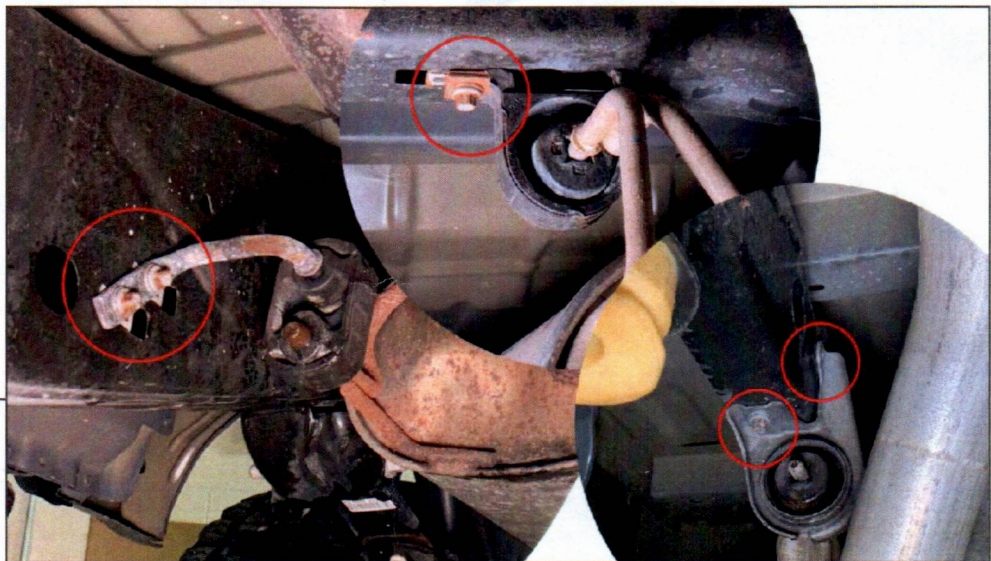
SKU # T633566 / T633567



### STEP 1

Safely lift the vehicle from the ground using a floor jack and jack stands.

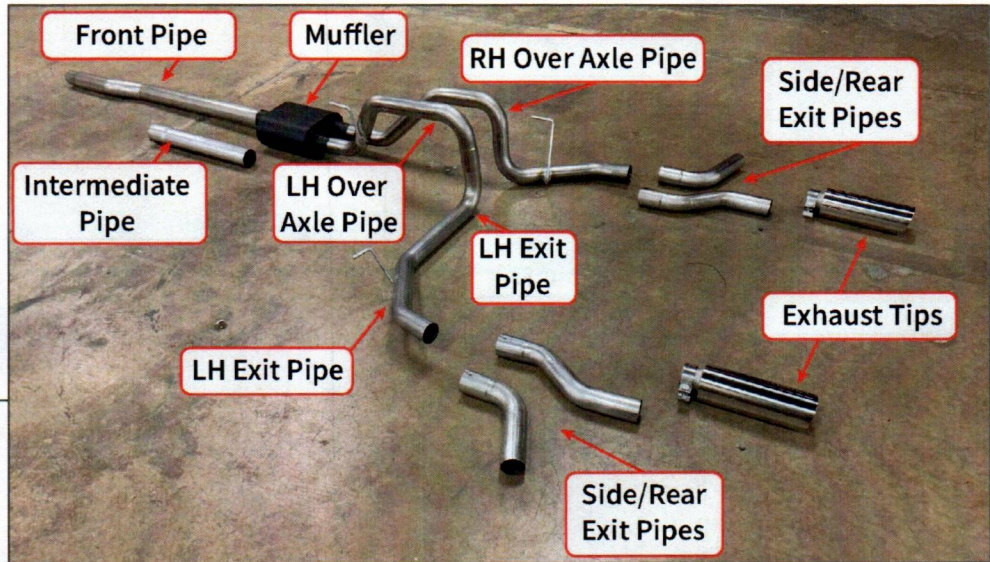
Locate and loosen the front clamp securing the exhaust system from the vehicle Y-pipe.



### STEP 2

Locate the (3) exhaust hangers. Use spray lubricant on each rubber hanger, and slide the exhaust from the OEM rubber hangers. Remove the exhaust system from the vehicle and set aside.

Note: Unbolting the (3) exhaust hangers from the vehicle frame can also allow the exhaust to be removed. Ensure to replace the



**STEP 3**

Lay out and identify the included exhaust components.



**STEP 4**

Depending on vehicle cab/bed length, the rear of the front pipe OR the intermediate pipe may need to be cut to the appropriate length. Trim additional material as necessary during installation.

Regular Cab  
6.5' Bed: Cut 16" of front pipe  
8' Bed: No Cutting

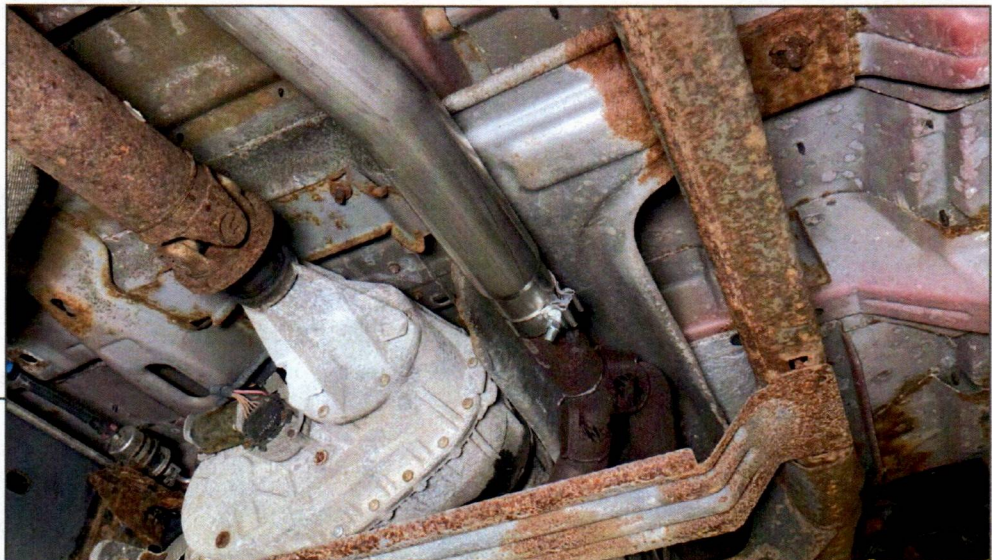
SuperCab  
5.5' Bed: Cut 10" of front pipe  
6.5' Bed: No Cutting  
8' Bed: No Cutting

SuperCrew  
5.5' Bed: Cut 4"  
6.5' Bed: Cut 10" from Intermediate Pipe



#### STEP 5

Locate the holes along the LH side frame rail. Fit the (1) 5/16 bolt with (1) flat washer through the round frame hole with a magnet tool. Then, fit the hanger bracket into place. Secure the hanger bracket into place using (1) flat washer, (1) lock washer, and (1) nut. Tighten until secure.



#### STEP 6

Fit (1) 2.5" exhaust clamp onto the vehicle Y-pipe, then fit the included front pipe to the vehicle Y-pipe.

Fit the included hanger clamp to the end of the front pipe and fit the hanger into the vehicle rubber hanger. Fit the intermediate pipe and loosely secure to the front pipe using (1) 3" exhaust clamp if necessary. Place (1) 3" exhaust clamp onto the front/intermediate pipe to prepare for the muffler.



**STEP 7**



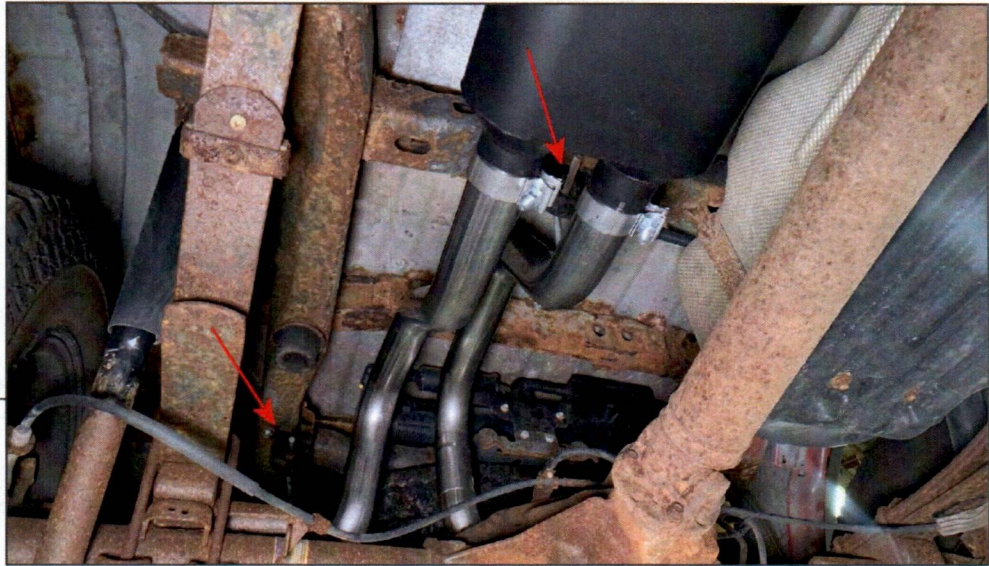
Fit the included hanger clamp to the front pipe. If necessary, relocate the OEM rubber exhaust hanger from the side of the frame to the crossmember above the front pipe using the OEM hardware. Then, fit the hanger clamp into the hanger and tighten into place.

**STEP 8**



Fit the muffler to the front/intermediate pipe, and loosely secure using the previously placed 3" exhaust clamp.

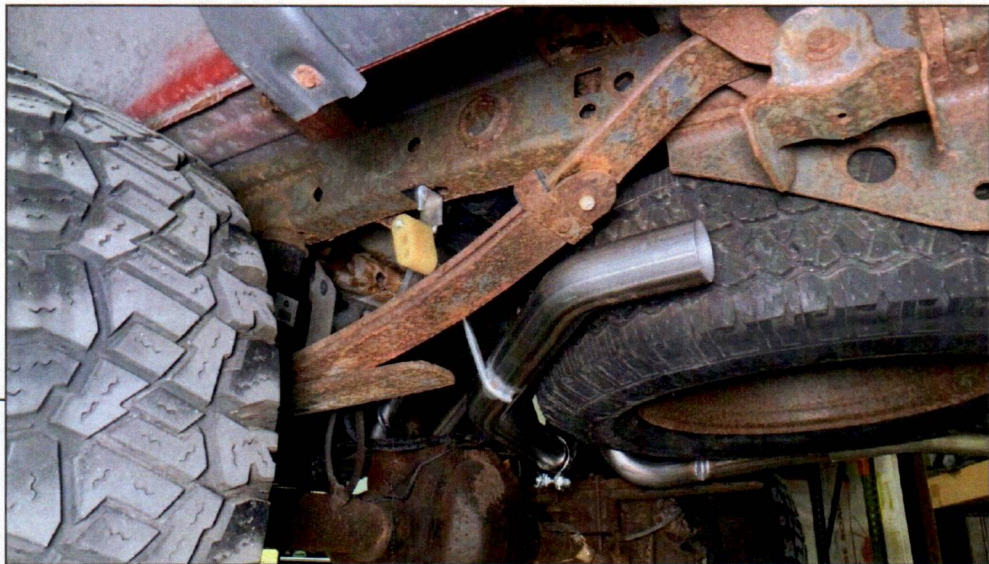
Fit (1) 2.5" exhaust clamp onto each muffler outlet to prepare for the over-axle pipes.



### STEP 9

Fit the LH and RH over-axle pipes into the muffler, and fit each pipe into the vehicle rubber hangers in the vehicle frame. Loosely secure the pipes to the muffler using the previously placed clamps.

Fit (1) 2.5" exhaust clamp onto each over-axle pipe to prepare for the next exhaust pipes.



### STEP 10

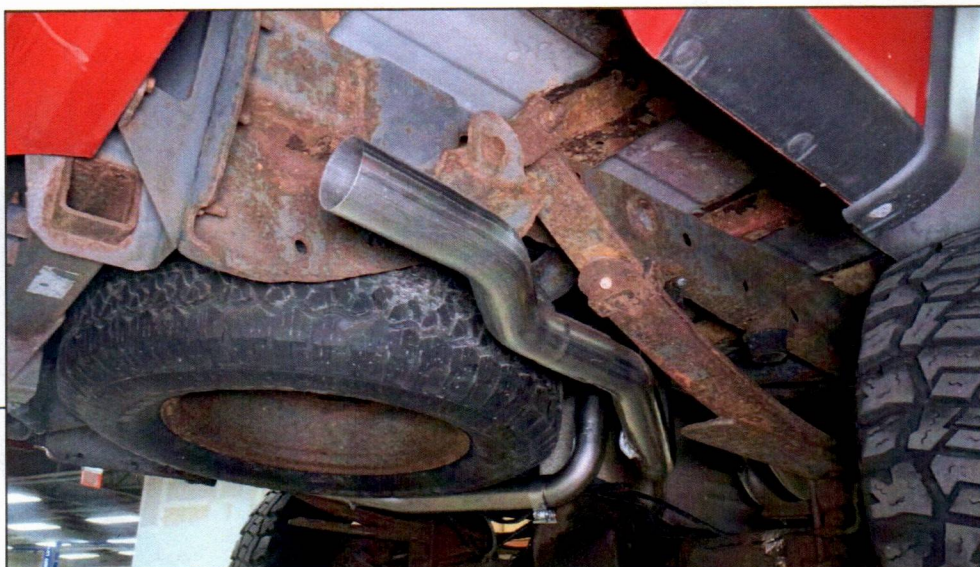
Fit the LH exit pipe into the LH over-axle pipe, then fit the pipe hanger into the previously placed rubber hanger along the frame. Loosely secure the pipes together using the previously placed exhaust clamp.

Fit (1) 2.5" exhaust clamp onto the end of the each pipe to prepare for the side/rear exit pipe.



---

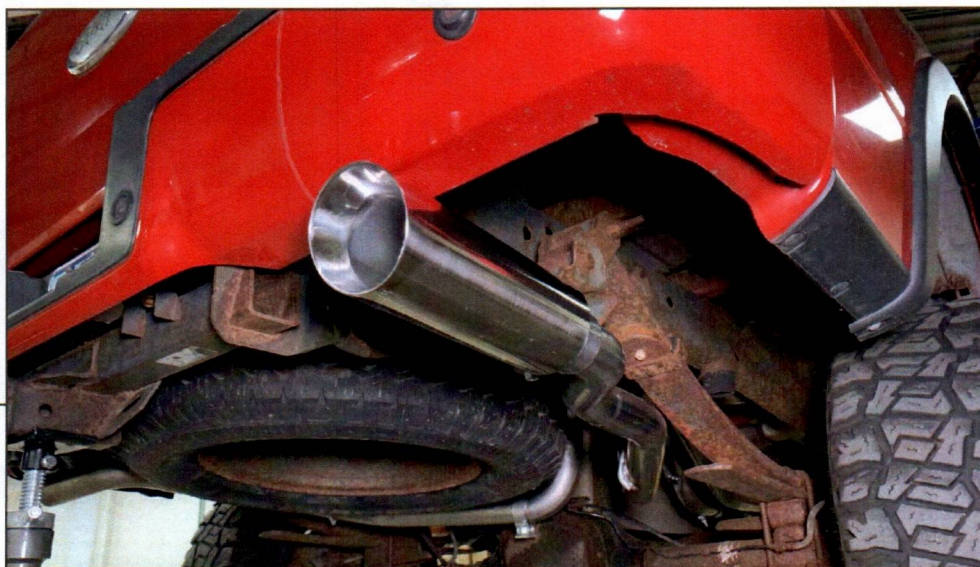
**STEP 11**



Fit the desired exit pipe to the exhaust system, and loosely secure using the previously placed exhaust clamp.

---

**STEP 12**



Fit the exhaust tip to each side exit pipe, and loosely secure using the included exhaust tip clamp.

Adjust the exhaust as necessary for the desired fit. Once properly adjusted, tighten all exhaust clamps to 45ft. lbs.

Installation is now complete.