



DUAL EXHAUST SYSTEM SPLIT REAR EXIT

(2009-2014 F-150)

INSTALLATION INSTRUCTIONS

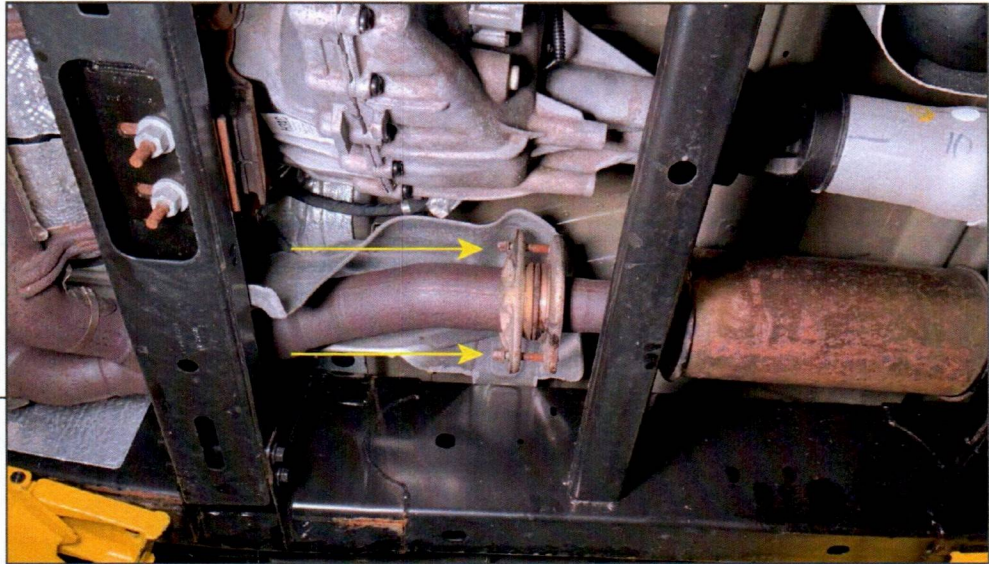
CONTENTS

- | | |
|------------------------------|-------------------------------|
| (1) Front Pipe (Trim to Fit) | (2) M10x1.50 x 70mm Hex Bolts |
| (1) Mid-Pipe (Trim to Fit) | (4) M10 Flat Washers |
| (1) Muffler | (2) M10 Lock Washers |
| (1) Left Side Pipe | (2) M10 Nuts |
| (1) Right Side Pipes | (1) M8 Threaded Clip |
| (2) Rear Exit Pipes | (1) M8 x 30mm Hex Bolt |
| (2) Side Exit Pipes | (1) M8 Lock Washer |
| (2) Exhaust Tips | (1) M8 Flat Washer |
| (2) 3" Exhaust Clamps | (1) Metal Exhaust Hanger |
| (1) 3" Exhaust Clamp Hanger | (2) Star Washers |
| (5) 2.5" Exhaust Clamps | (1) Rubber Hanger |

TOOLS REQUIRED

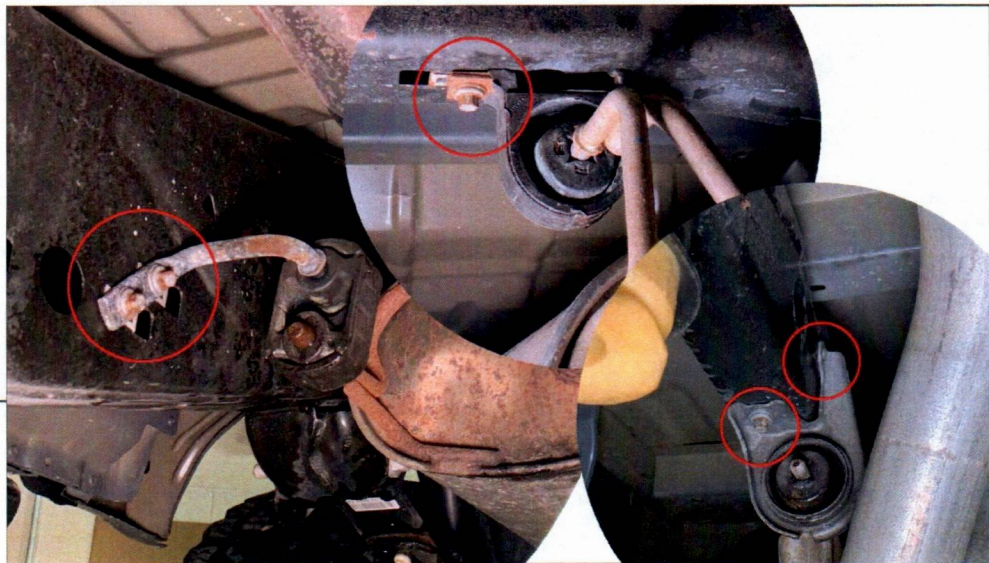
-
- 10mm, 13mm, 15mm Socket /Wrench
 - Ratchet
 - Extensions
 - Large Flat Blade Screw Driver
 - Cut Off Tool

SKU # T633568 / T633569



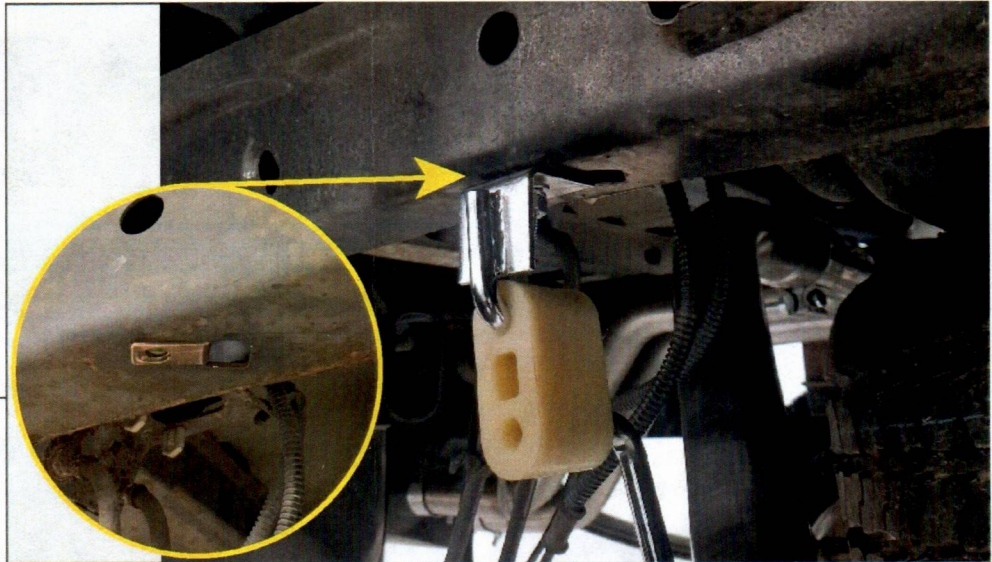
STEP 1

Begin by raising and supporting the vehicle to gain better access to the factory exhaust system. Locate the factory (2) bolt exhaust flange located to the right of the transmission/transfer case. Use a 13mm socket to remove the factory bolts. **Note: Factory hardware will not be reused.



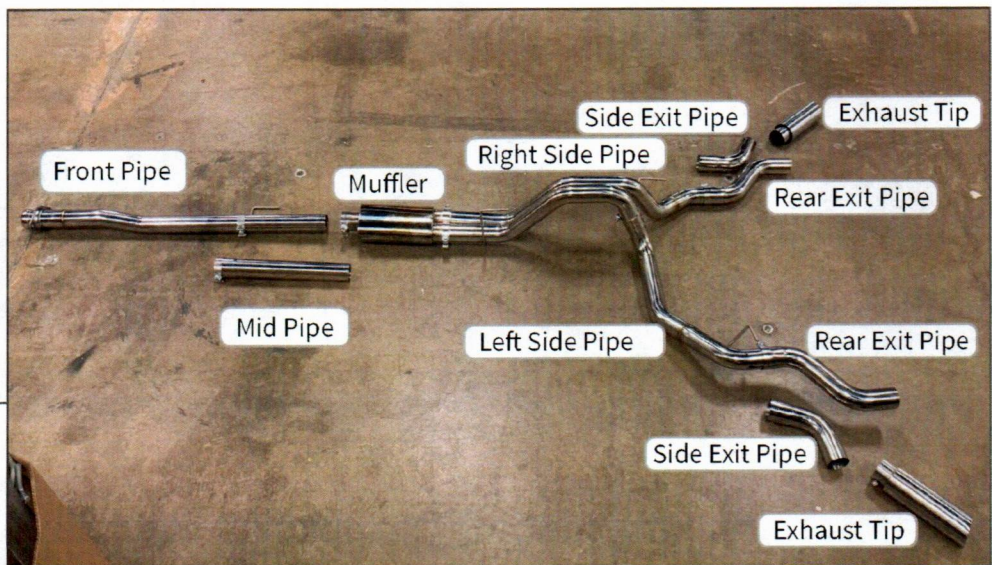
STEP 2

Using a 10mm socket, locate and remove the various exhaust hangers that secure the exhaust to the vehicle. Location and quantity may vary depending on cab style and bed length.



STEP 3

Install the supplied exhaust hanger on the driver side of the frame. Insert the supplied clip nut on the driver side of the frame rail from the square hole into the round hole. Then, install the supplied exhaust hanger using the provided (1) M8 x 30mm bolt, flat washer, lock washer. Torque to 18ft.lbs.

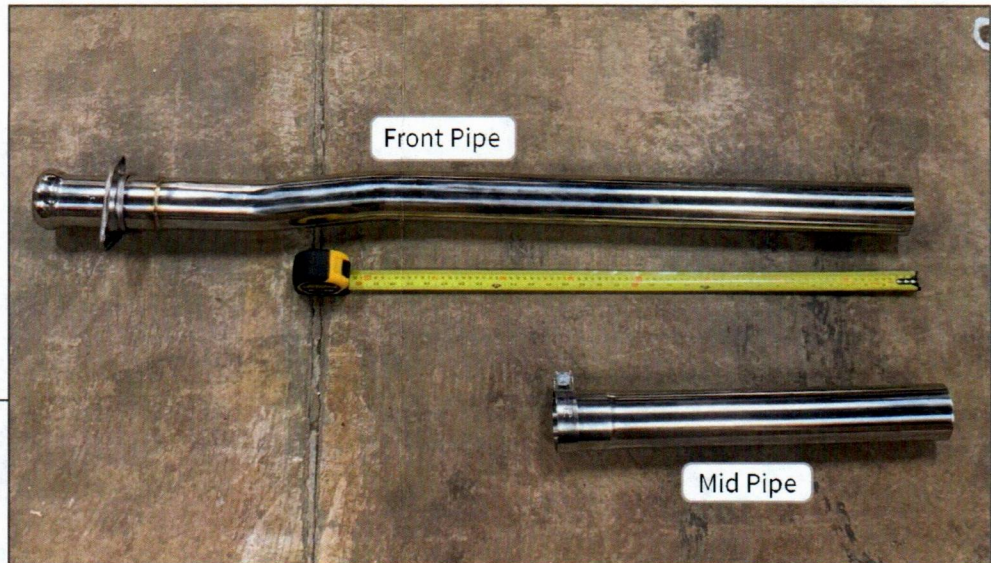


STEP 4

Identify the different exhaust components. Depending on your vehicles configuration you may need to trim the front/mid pipe.



STEP 5



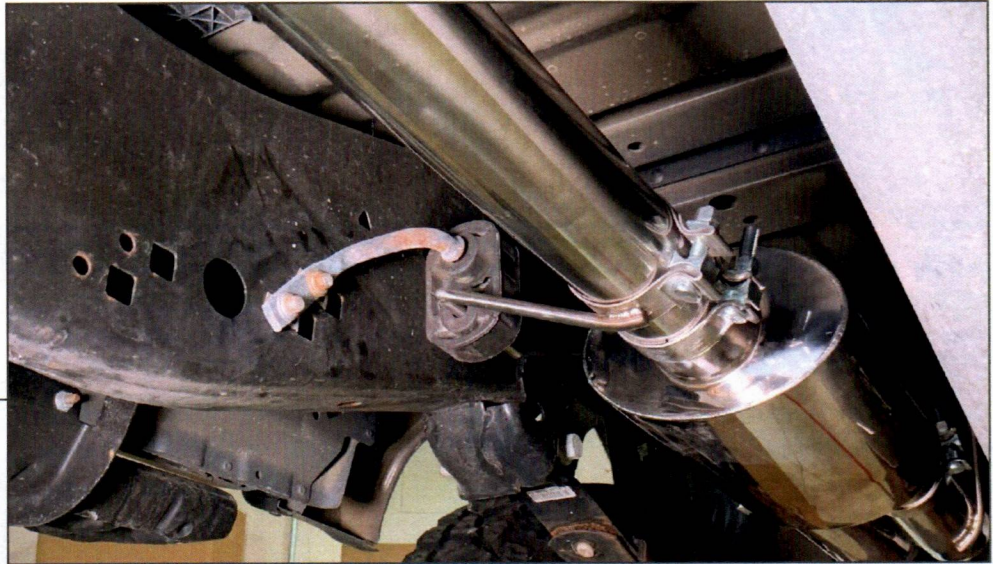
Trim the Front/ Mid pipe depending on your vehicles configuration. Use the chat below as reference.

<u>Wheel Base</u>	<u>Cab Style</u>	<u>Box Size</u>	<u>Front Pipe</u>	<u>Mid Pipe</u>
126"	Regular	6.5'	Remove 18"	Not Used
133"	Super Cab	5.5'	Remove 12"	Not Used
145"	Super Crew	5.5'	Do Not Cut	Not Used
145"	Regular Cab	8'	Do Not Cut	Not Used
145"	Super Cab	6.5'	Do Not Cut	Not Used
157"	Super Crew	6.5'	Do Not Cut	Remove 6"
163"	Super Cab	8'	Do Not Cut	Do Not Cut

STEP 6



Begin by loosely installing the front pipe using (2) of the supplied M10 x 70mm bolts, lock washers, flat washers, and nuts.



STEP 7

If required, slide the mid pipe onto the front pipe with an exhaust clamp. Then, install the clamp hanger so that it aligns with the factory frame mounted exhaust hanger right before the muffler. Reuse the factory rubber isolator and bolts.

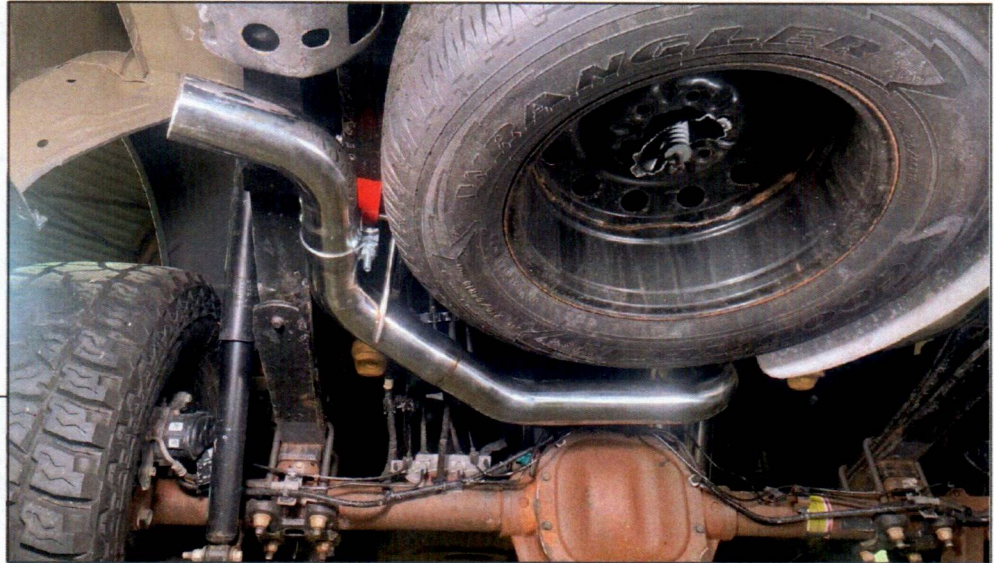


STEP 8

Loosely install the muffler and rear left and right exhaust pipes. Ensure all joints have an exhaust clamp. Do not fully tighten the clamps at this time.

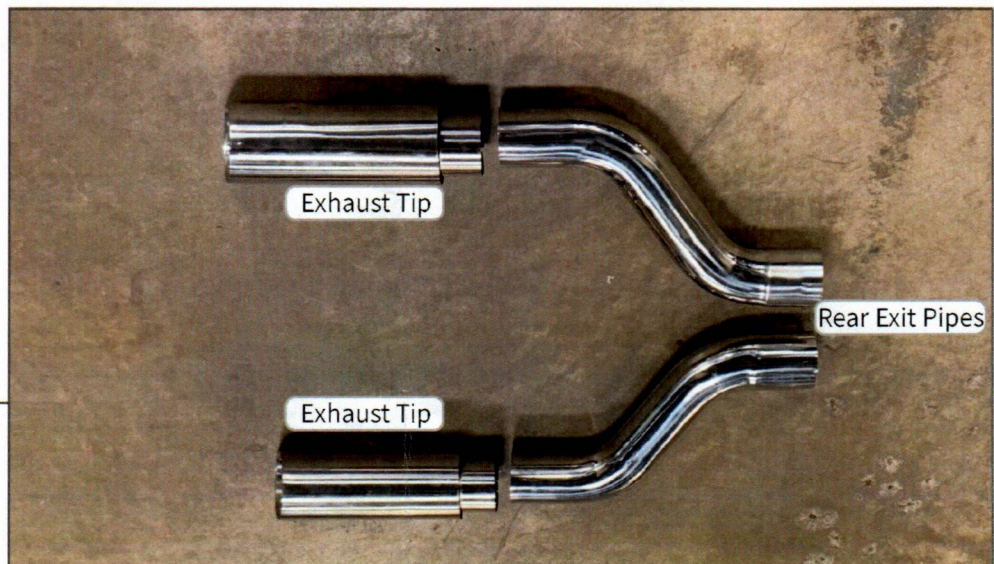


STEP 9



Hang the left side exhaust pipe using the provided isolator and hanger installed in step 3.

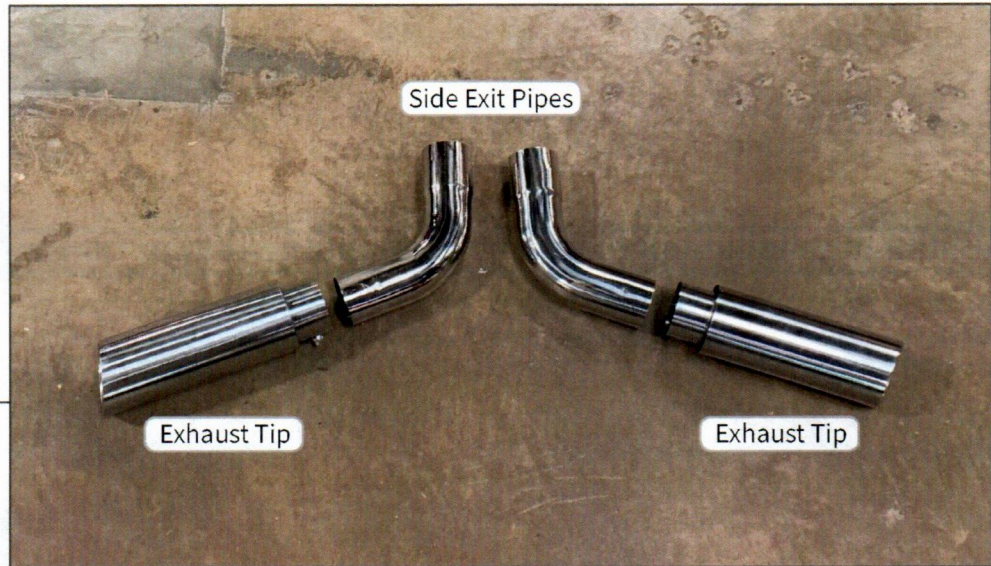
STEP 10



If the vehicle does not come equipped with a trailer hitch, the rear exit pipes may be installed. If the vehicle has a trailer hitch, skip to step 11



STEP 11



If the vehicle is equipped with a trailer hitch, the side exit pipes must be used as shown above.

STEP 12



With the exhaust loosely installed, begin tightening the exhaust clamps. Work from the 2 bolt flange towards the exhaust tips. Rotate the muffler/pipes as needed for best fit. Torque the M10 bolts to 30 ft.-lbs. and M8 bolts to 18 ft.-lbs. Tighten the exhaust clamps to 45 ft.-lbs.