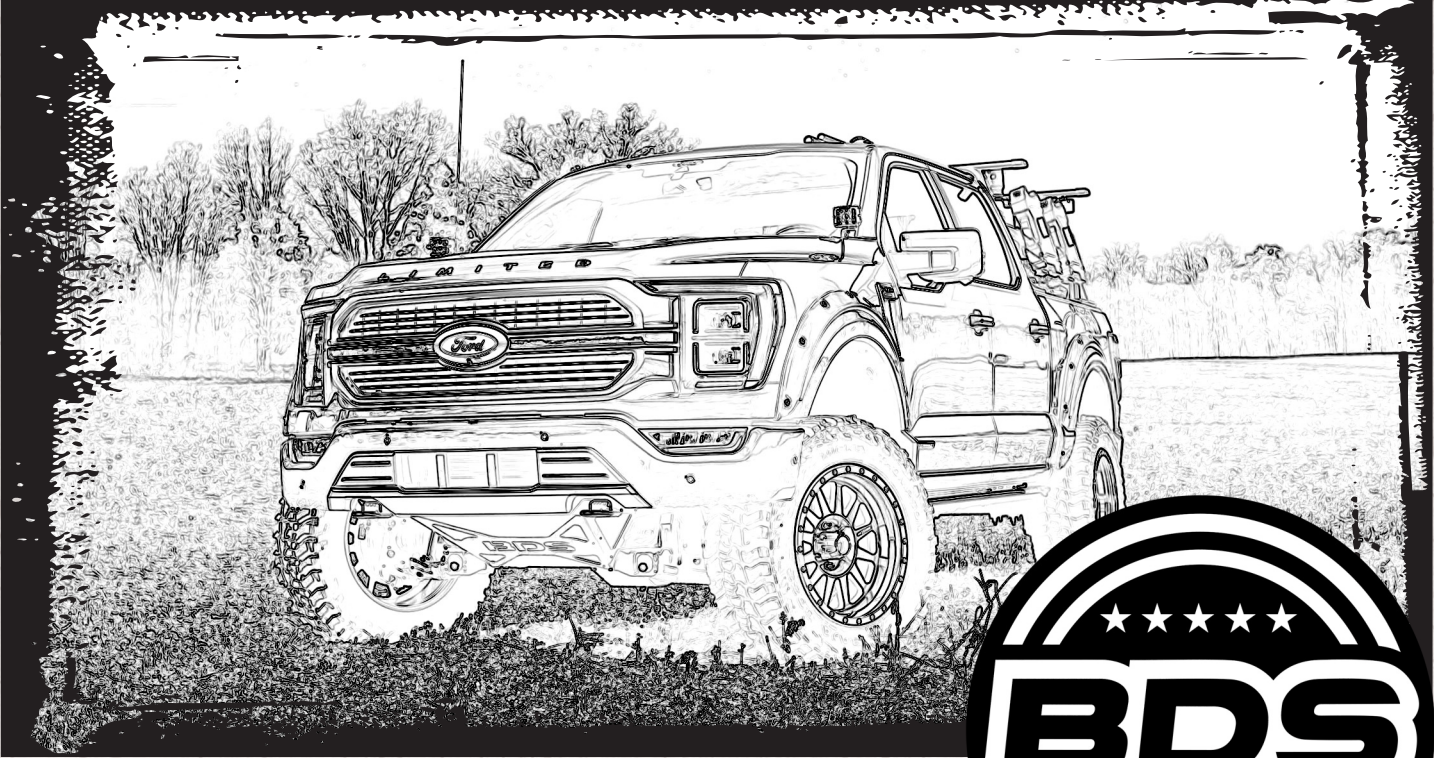


INSTALLATION GUIDE



Part#: 123621-123622



HARDCORE LIMITED LIFETIME WARRANTY

Front Skid Plate

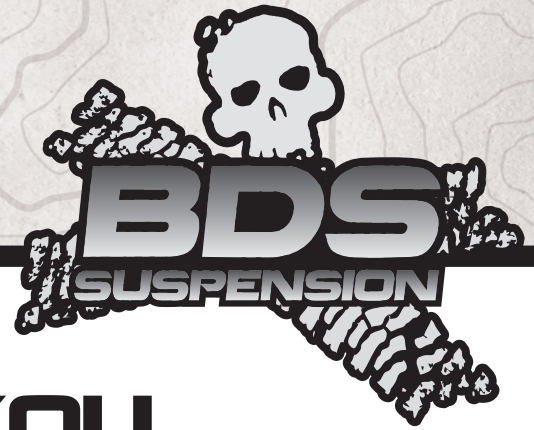
Ford F150 4WD | 2021-2025

Rev. 052725

491 W. Garfield Ave., Coldwater, MI 49036 • Phone: 517-279-2135

Web: www.bds-suspension.com • E-mail: tech-bds@ridefox.com

Read And Understand All Instructions And Warnings Prior To Installation Of System And Operation Of Vehicle.



THANK YOU

Your truck is about to be fitted with the best suspension system on the market today. That means you will be driving the baddest looking truck in the neighborhood, and you'll have the warranty to ensure that it stays that way for years to come. Thank you for choosing BDS Suspension!

BEFORE YOU START

BDS Suspension Co. recommends this system be installed by a professional technician. In addition to these instructions, professional knowledge of disassembly/ reassembly procedures and post installation checks must be known.

FOR YOUR SAFETY

Certain BDS Suspension products are intended to improve off-road performance. Modifying your vehicle for off-road use may result in the vehicle handling differently than a factory equipped vehicle. Extreme care must be used to prevent loss of control or vehicle rollover. Failure to drive your modified vehicle safely may result in serious injury or death. BDS Suspension Co. does not recommend the combined use of suspension lifts, body lifts, or other lifting devices. You should never operate your modified vehicle under the influence of alcohol or drugs. Always drive your modified vehicle at reduced speeds to ensure your ability to control your vehicle under all driving conditions. Always wear your seat belt.

BEFORE INSTALLATION

Special literature required: OE Service Manual for model/year of vehicle. Refer to manual for proper disassembly/reassembly procedures of OE and related components.

Adhere to recommendations when replacement fasteners, retainers and keepers are called out in the OE manual.

Larger rim and tire combinations may increase leverage on suspension, steering, and related components. When selecting combinations larger than OE, consider the additional stress you could be inducing on the OE and related components.

Post suspension system vehicles may experience drive line vibrations. Angles may require tuning, slider on shaft may require replacement, shafts may need to be lengthened or trued, and U-joints may need to be replaced.

Secure and properly block vehicle prior to installation of BDS Suspension components. Always wear safety glasses when using power tools.

If installation is to be performed without a hoist, BDS Suspension Co. recommends rear alterations first.

Due to payload options and initial ride height variances, the amount of lift is a base figure. Final ride height dimensions may vary in accordance to original vehicle attitude. Always measure the attitude prior to beginning installation.



Visit 560plus.com for more information.

BEFORE YOU DRIVE

Check all fasteners for proper torque. Check to ensure for adequate clearance between all rotating, mobile, fixed, and heated members. Verify clearance between exhaust and brake lines, fuel lines, fuel tank, floor boards and wiring harness. Check steering gear for clearance. Test and inspect brake system.

Perform steering sweep to ensure front brake hoses have adequate slack and do not contact any rotating, mobile or heated members. Inspect rear brake hoses at full extension for adequate slack. Failure to perform hose check/ replacement may result in component failure. Longer replacement hoses, if needed can be purchased from a local parts supplier.

Perform head light check and adjustment.

Re-torque all fasteners after 500 miles. Always inspect fasteners and components during routine servicing.

CONTENTS OF YOUR KIT

2021 Ford F150 Front Skid Plate- EcoBoost		
<i>Part #</i>	<i>Qty</i>	<i>Description</i>
05066	1	Ford F150 Front Skid Plate Main
05067	1	Ford F150 Front Skid Plate Logo Plate
05103	1	Ford F150 Front Skid Plate Radiator Support DRV
05104	1	<i>Ford F150 Front Skid Plate Radiator Support PASS</i>
BP1028	1	<i>2021 Ford F150 Skid Plate Bolt Pack</i>
	20	<i>10-24 x 5/8" BHCS - Black Stainless Steel</i>
	20	<i>10-24 Nylock Nut- Clear Stainless Steel</i>
	20	<i>#10 Flat washer - Clear Stainless Steel</i>
	1	<i>1/2"-13 x 1-1/4" Bolt, Grade 8, Yellow Zinc</i>
	1	<i>1/2" SAE Washer, Yellow Zinc</i>
	1	<i>Rubber Stripping 26in</i>

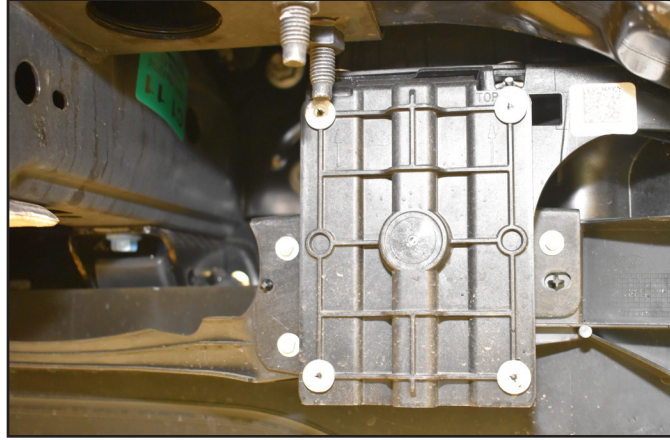
2021 Ford F150 Front Skid Plate		
<i>Part #</i>	<i>Qty</i>	<i>Description</i>
05066	1	Ford F150 Front Skid Plate Main
05067	1	Ford F150 Front Skid Plate Logo Plate
BP1028	1	<i>2021 Ford F150 Skid Plate Bolt Pack</i>
	20	<i>10-24 x 5/8" BHCS - Black Stainless Steel</i>
	20	<i>10-24 Nylock Nut- Clear Stainless Steel</i>
	20	<i>#10 Flat washer - Clear Stainless Steel</i>
	1	<i>1/2"-13 x 1-1/4" Bolt, Grade 8, Yellow Zinc</i>
	1	<i>1/2" SAE Washer, Yellow Zinc</i>
	1	<i>Rubber Stripping 26in</i>

INSTALLATION INSTRUCTIONS

INSTALLATION INSTRUCTIONS

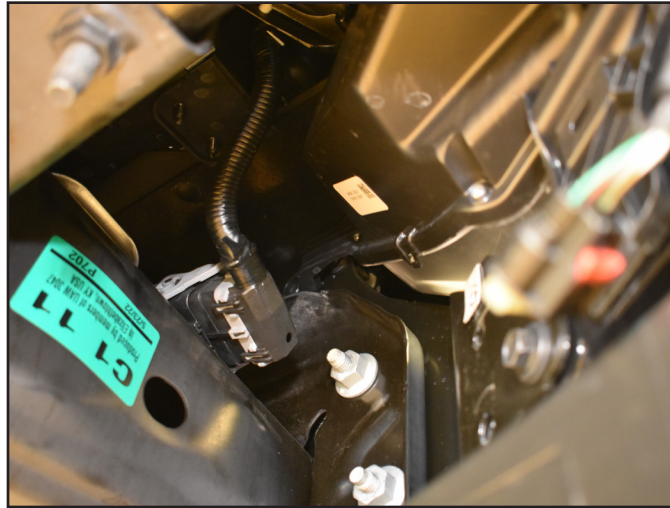
1. Park vehicle on clean flat and level surface.
2. Remove 3 bolts from active air dam attaching air dam to active air dam motor. (Both Sides) Tool: 7mm Socket (**Fig. 1**)

FIGURE 1



3. Remove 2 - 13mm bolts from air dam motor attaching dam motor to the front bumper. Note: To gain slack remove wire harness from point where it attaches to the bumper.
4. Unplug motors and set aside. Make not of drivers side and passenger side.
5. Unplug wire harness (**Fig. 2**) on passenger side above bumper. Note: To unplug wire harness push down locking tab, then lift and release gray lever.

FIGURE 2



6. Remove inner cooler support bracket by removing the 2 - 15mm bolts (**Fig. 3, Fig. 4**)

FIGURE 3

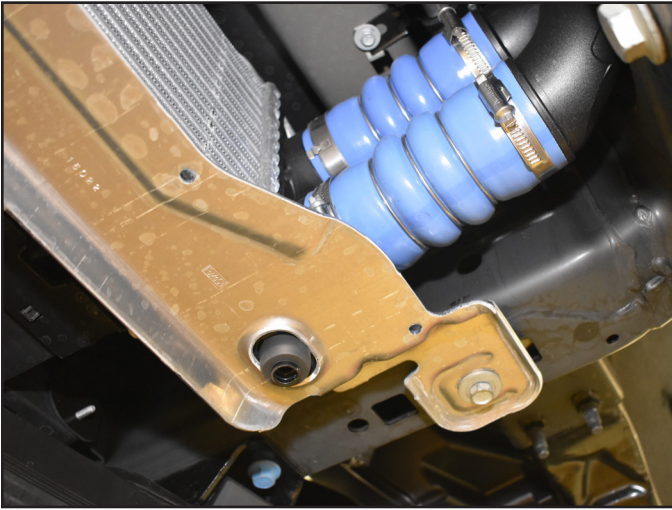
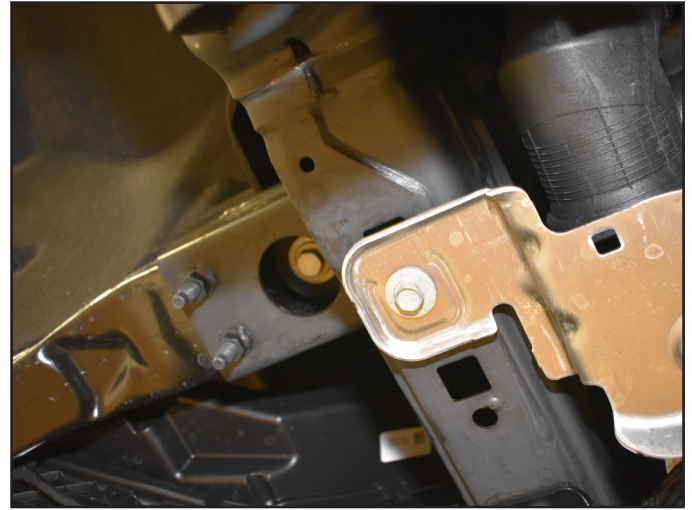


FIGURE 4



7. Remove 6 - 21mm nuts from inner bumper, 3 per side. Inner driver side may be difficult to get to if your vehicle is back-up alarm equipped.
8. Unplug passenger side grill shutter actuator. (**Fig. 5**)

FIGURE 5



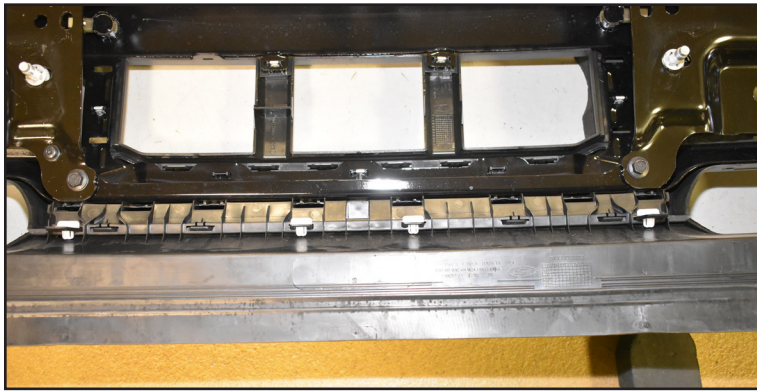
9. To remove bumper, pull away from vehicle slightly and find wire harness inside top of bumper. Unplug wire harness on driver side, then detach 4 harness retainer clips. (**Fig. 6**)

FIGURE 6



10. Remove the 4 clips keeping the lower air dam in place. (**Fig. 7**)

FIGURE 7



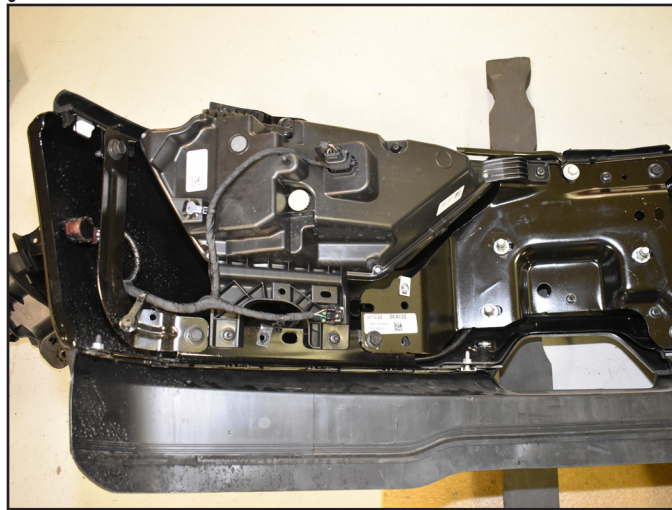
11. Remove the 4 - T30 Torx screws attaching the fog lights to the bumper. Disconnect from wire harness. Both sides. Remove the 4 - 13mm bolts from the bumper mounting brackets. (**Fig. 8**)

Models with Radar - do not remove - move off to side



Tip

FIGURE 8



12. Remove 2 - 13mm bracket bolts from both sides of the inside of the bumper as indicated in (**Fig. 9**)

FIGURE 9



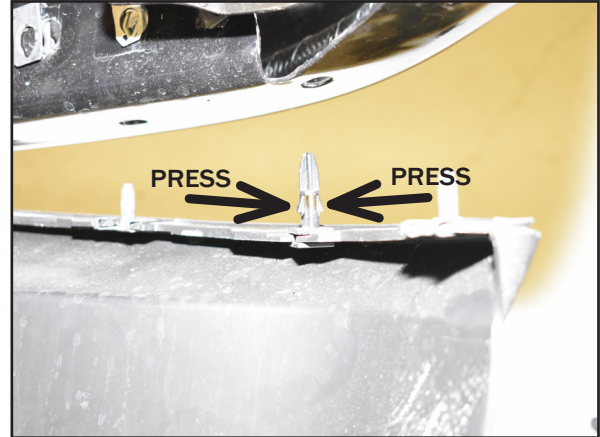
13. Remove 16 - 10mm bolts and 2 retainer fasteners from bumper as indicated to remove lower air dam. (**Fig. 10**)

Note: To remove 2 lower retainer fastener, press sides of fastener. (Fig.11)

FIGURE 10



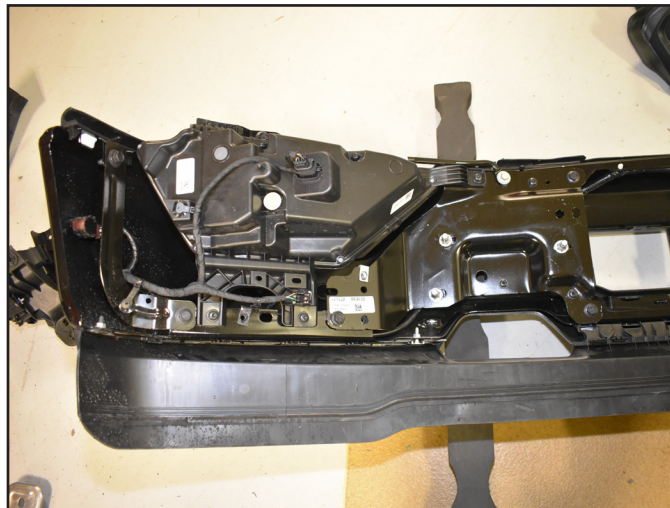
FIGURE 11



RE-ASSEMBLY

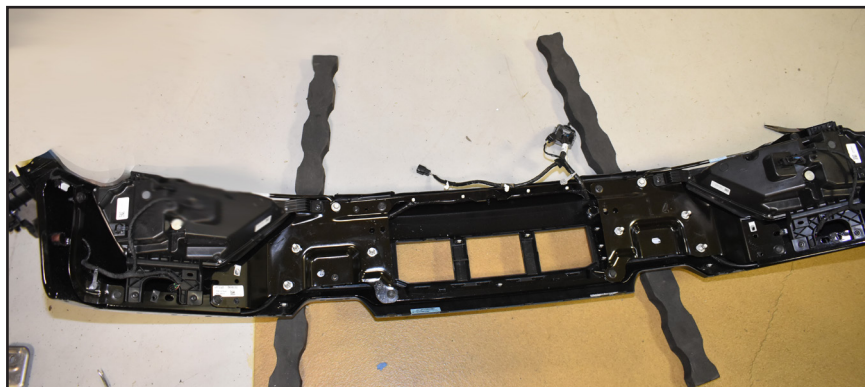
14. Re Install bumper brackets and fog light assemblies. (Fig. 12)

FIGURE 12



15. Re attached wire harness and wire harness attachment clips.
16. See fully re-assembled bumper. (Fig. 13)

FIGURE 13



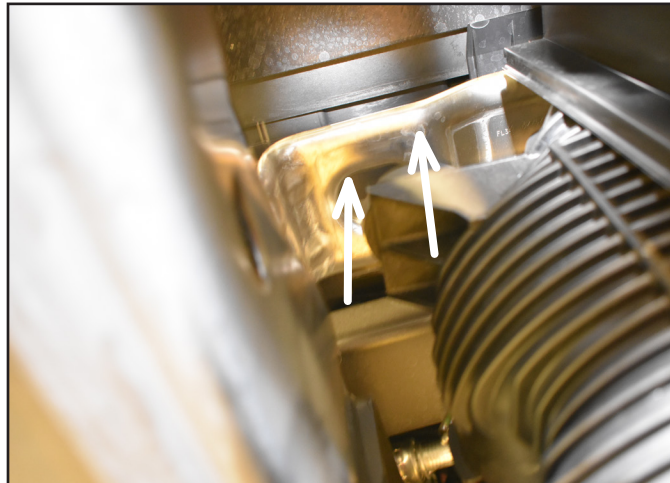
17. Remove tow hooks from the front drivers and passenger sides of the vehicle. (Fig.14)

FIGURE 14



NOTE: Upper inner cooler isolator alignment is important when re-installing inner cooler bracket. (Fig. 15)

FIGURE 15



18. Re Install Bumper.
19. Attach overlay plate to base using the 20 included button head bolts. (Fig. 16)

FIGURE 16



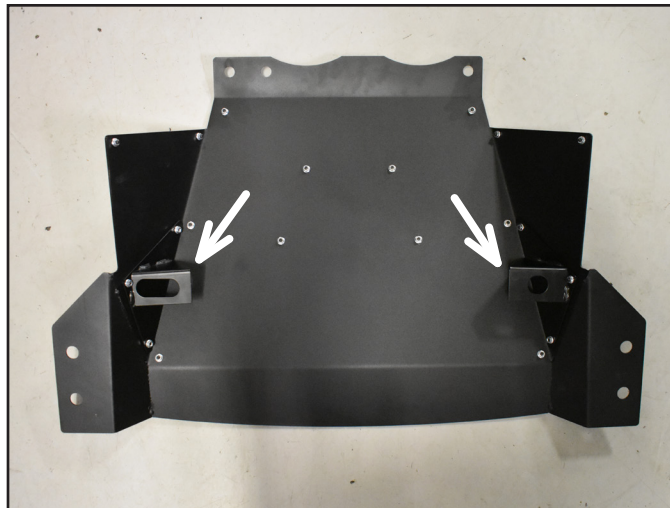
20. Install rubber edging to trim front edge of skid plate. (Fig. 17)

FIGURE 17



21. Install Intercooler brackets to inside of skid plate for those models equipped with an intercooler. (Fig. 18)

FIGURE 18



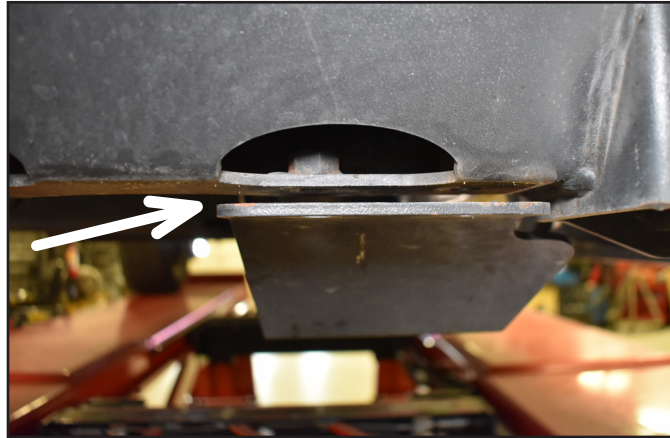
22. Check factory nut tabs for alignment prior to bolt installation. Both Sides. (Fig. 19)

FIGURE 19



- 23. Check alignment of upper and lower intercooler tabs to ensure proper installation.
- 24. Install Skid plate at rear first by fitting skid plate between the two plates as shown. **(Fig. 20)**

FIGURE 20



- 25. Install 4 bolts as shown in **(Fig. 21-22)** Do not tighten bolts to allow some play for aligning and attaching the front.

FIGURE 21

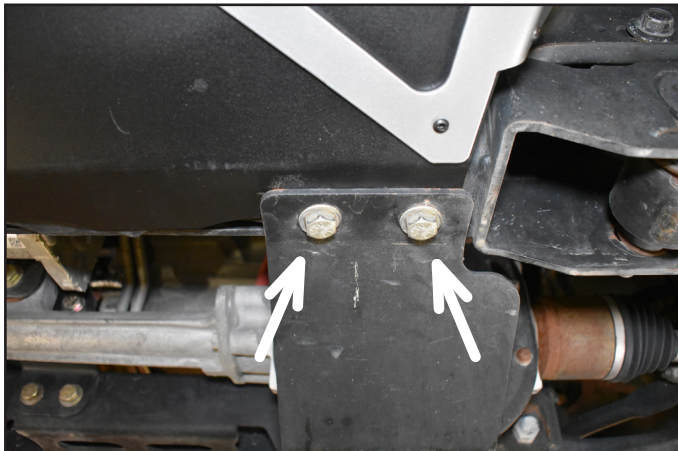
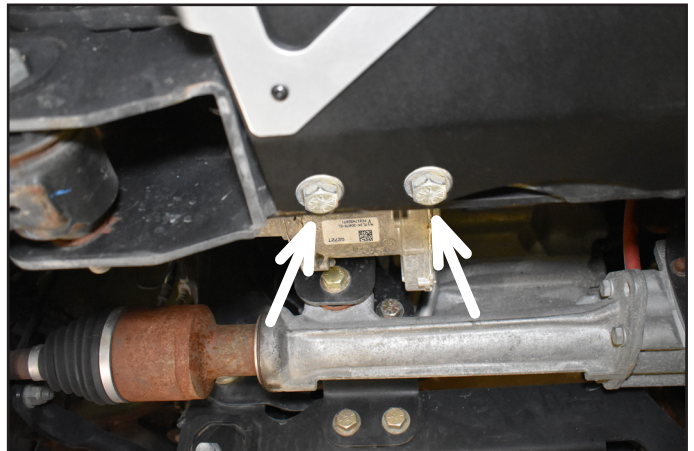
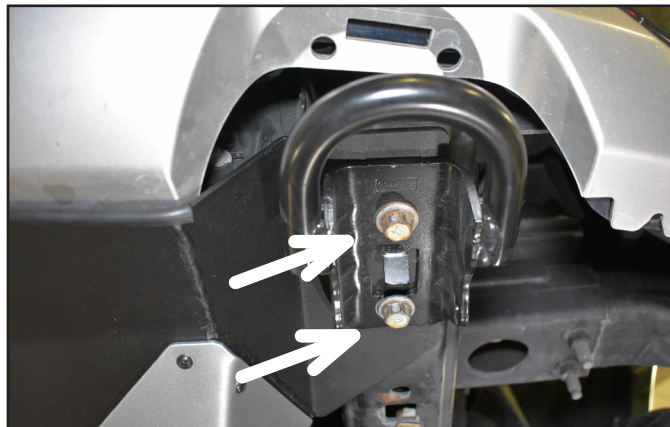


FIGURE 22



- 26. Lift front of skid plate, make sure to align intercooler brackets to tabs on intercooler(if equipped)
- 27. Reinstall factory tow hooks by attaching bolts through tow hook brackets first, then through the skid plate and into the nut tabs in the frame. **(Fig. 23)**

FIGURE 23





WE WANT TO SEE YOUR RIDE!

Grab photos of your BDS-equipped truck in action and send them in for a chance to be featured. Send it in to our Bad Ass Rides customer gallery at bds-suspension.com/bar and post them on the BDS Fan Page on Facebook at facebook.com/BDSSuspensions. Don't forget about your BDS swag! BDS offers t-shirts, hoodies, decals and more available on the BDS website or through your local BDS distributor.

TIME TO HAVE SOME FUN

Thank you for choosing BDS Suspension.

For questions, technical support and warranty issues relating to this BDS Suspension product, please contact your distributor/installer before contacting BDS Suspension directly.