



Installation Guide

Raptor Style Mesh Grille
For 2004-2008 Ford F150

SKU # AMFMAA00158

STEP 1



Remove the two 10mm bolts on either side and this series of 10mm nut along the top as well as the old bracket to remove the old grille.

STEP 2



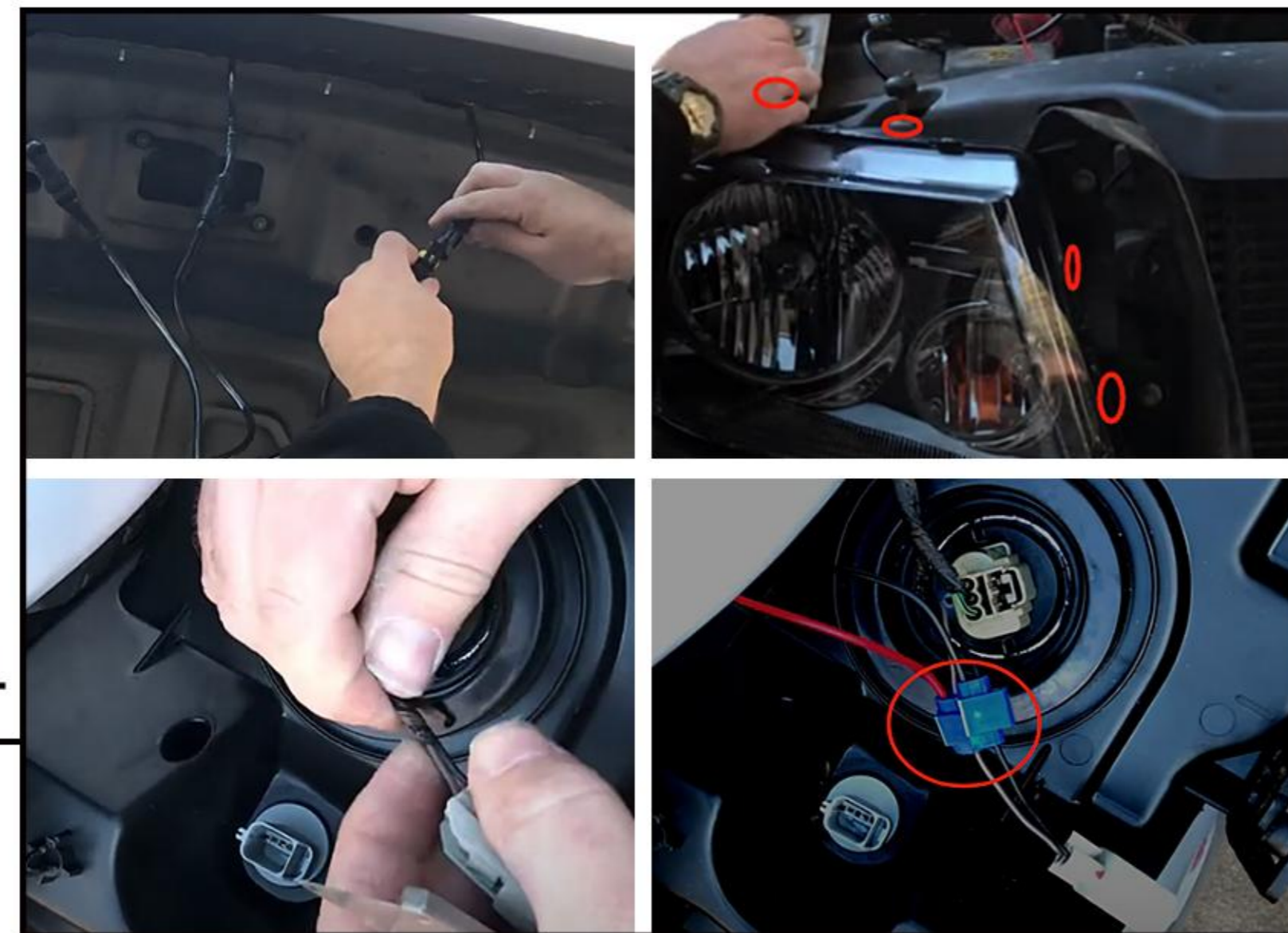
Take out the new grille, loosen 5 screws to remove the horizontal bar. Remove the "Ford" label from the original car and install it on the horizontal bar. Finally, tighten 5 screws again to install the horizontal bar.

STEP 3



Put the new bracket that comes in the package onto the new grille. Then tighten all screws and bolts to reinstall the new grille onto the car.

STEP 4



Connect each amber light to the wiring harness. Remove the screws on the top and right sides to remove the headlights. Use a small knife to remove some tape of the connector inside the headlight. Use quick connects to connect the red wire that comes from the amber lights to the brown wire and black to black.

STEP 5



Plug back into the Blinker and reinstall the headlights to finish the installation.