



3” SINGLE EXIT EXHAUST SYSTEM

(2015-2020 F-150)

INSTALLATION INSTRUCTIONS

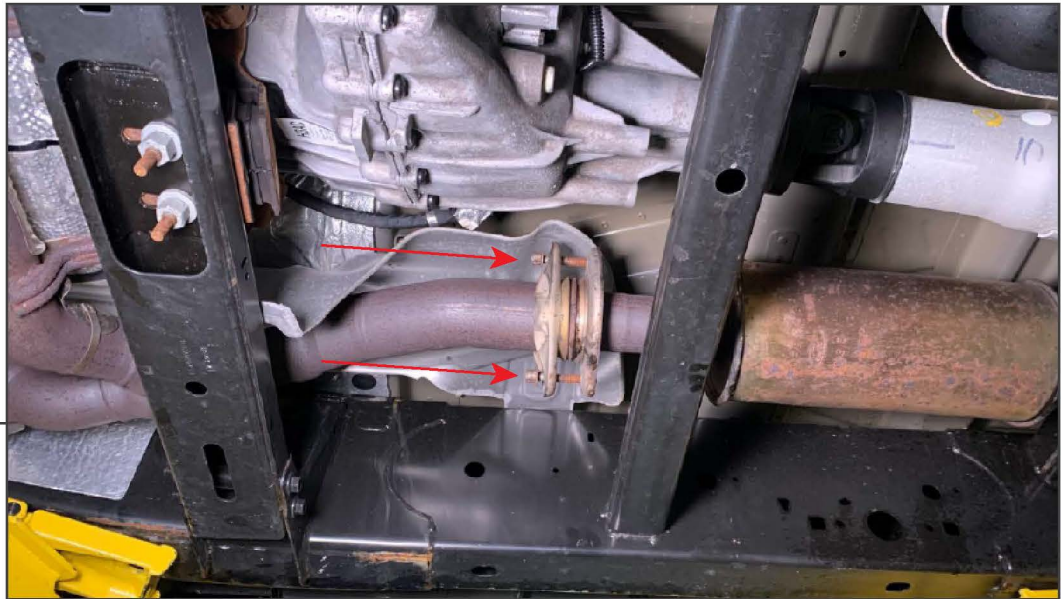
CONTENTS

- (1) Front Flange Pipe
- (1) Front Pipe
- (1) Mid Pipe
- (1) Muffler
- (1) Over-Axle Pipe
- (1) Exhaust Tip
- (2) 3/8-16 x 2” Bolts
- (2) Lock Washers
- (4) Flat Washers
- (2) 3/8-16 Nuts
- (5) 3” Band Clamps
- (1) Hanger Clamp

TOOLS REQUIRED

- 10mm, 13mm, 15mm Sockets
- Ratchet
- Spray Lubricant
- Floor Jack
- Jack Stands

SKU # T638170



STEP 1

Lift and support the vehicle using a jack and jack stands. Remove (2) 13mm bolts at the front flange next to the vehicle transmission/transfer case.

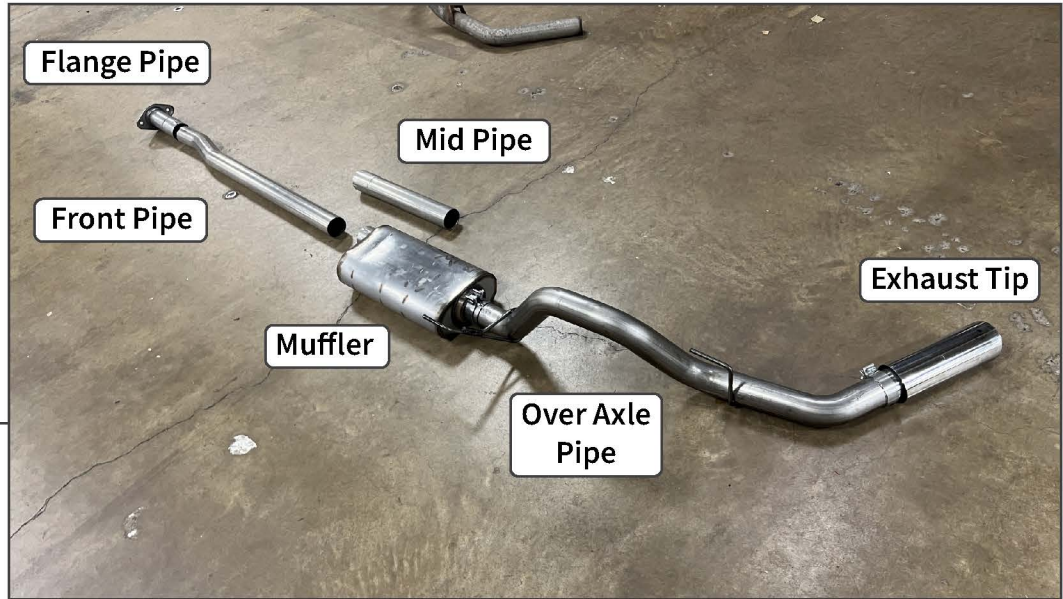
Note: Flange hardware will not be reused.



STEP 2

Using a 10mm socket, locate and remove the various exhaust hangers that secure the exhaust to the vehicle. Location and quantity may vary depending on cab style and bed length.

Note: Hardware will be reused.



STEP 3

Lay out and identify the different exhaust components. See Step 4 regarding intermediate pipes.

Transfer the previously removed exhaust hangers to the new exhaust pipes in the original orientation.



STEP 4

Depending on the vehicle cab/bed configuration, a variation of the front/mid pipes will be used/modified. See the following chart.

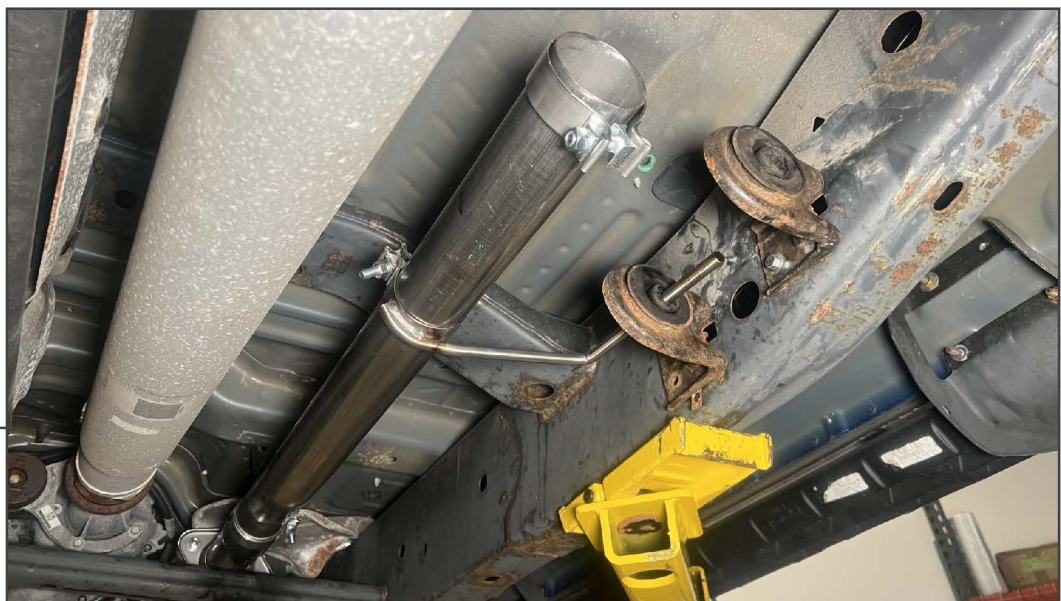
Wheel Base	Body Style	Bed Length	A	B
141"	Regular Cab	8'	Trim 4"	Not Installed
145"	Super Crew	5.5'	Required	Not Installed
145"	Super Cab	6.5'	Required	Not Installed
157"	Super Crew	6.5'	Required	Trim 6"
163"	Super Cab	8'	Required	Required



STEP 5

Using (2) 3/8 Bolts, (2) Lock Washers, (4) Flat Washers, and (2) Nuts, loosely secure the flange pipe to the vehicle Y-Pipe. Do not fully tighten to allow for adjustments later.

Place (1) 3" exhaust clamp on the end of the pipe in preparation for the front pipe.



STEP 6

Install the front pipe onto the flange pipe. Slide (1) hanger clamp onto the front pipe and place the hanger into the vehicle frame mounted rubber hanger.

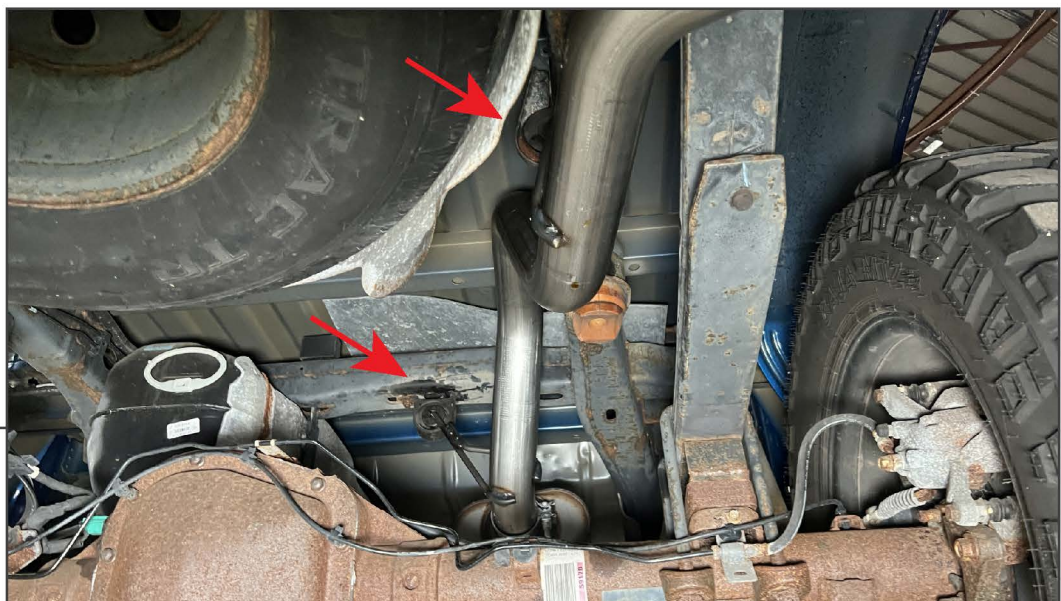
Place (1) 3" exhaust clamp on the end of the front pipe in preparation for the mid pipe / muffler.



STEP 7

Install the muffler onto the front pipe and loosely secure using (1) previously placed 3" exhaust clamp. *Depending on application, install the mid pipe between the front pipe and muffler if necessary.

Place (1) 3" exhaust clamp on the end of the muffler in preparation for the following over axle pipe.



STEP 8

Install the over-axle pipe onto the muffler, and loosely secure using (1) previously placed 3" exhaust clamp. Fit the over-axle pipe hangers into the vehicle hangers. If necessary, fit the vehicle hangers to the over-axle pipe first, and then bolt the vehicle hangers with the pipe to the frame.

Place (1) 3" exhaust clamp on the end of the over-axle pipe in preparation for the exhaust tip.



STEP 9

Install the exhaust tip onto the tail pipe using (1) 3" exhaust clamp. Adjust the exhaust as necessary, and tighten all bolts/clamps until secure. Tighten all exhaust clamps until 45 ft./lbs.

Installation is now complete.