

# LED HALO SURROUND HEADLIGHTS

(2018-2020 F-150)

---

## INSTALLATION INSTRUCTIONS

### CONTENTS

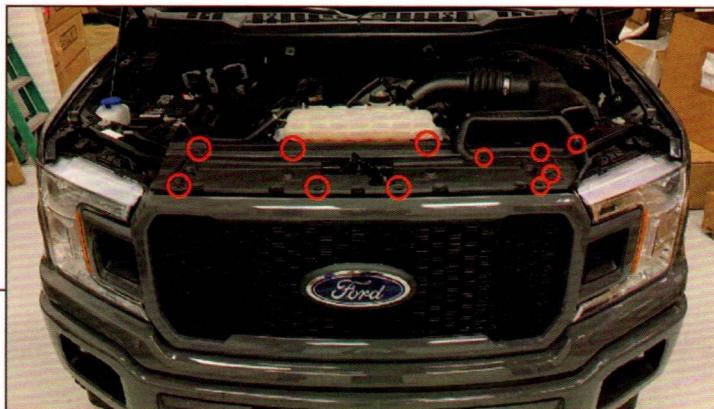
---

- (1) Pair of LED Headlights
- (2) Adapter Harnesses

### TOOLS REQUIRED

---

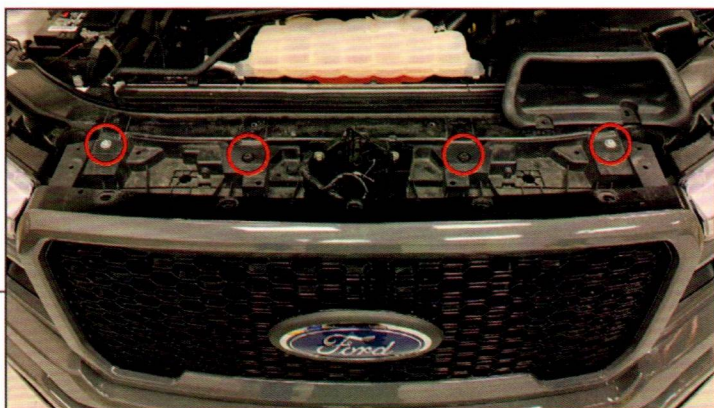
- Panel Removal Tool
- 7mm, 8mm, 10mm Sockets
- T-25 Torx Socket
- Socket Wrench



---

**STEP 1**

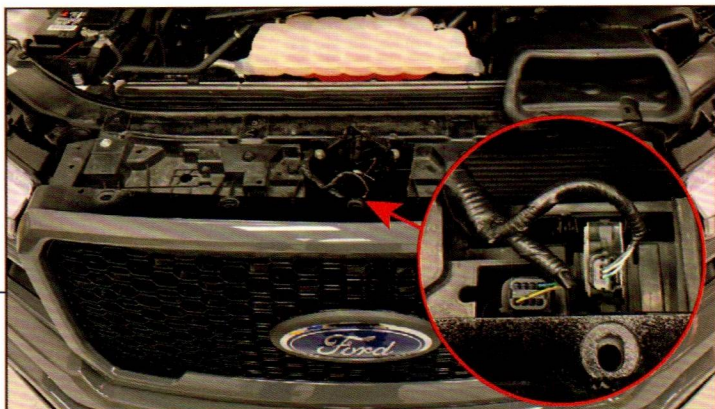
Remove (11) push clips from the upper grille cover. Remove the cover from vehicle.



---

**STEP 2**

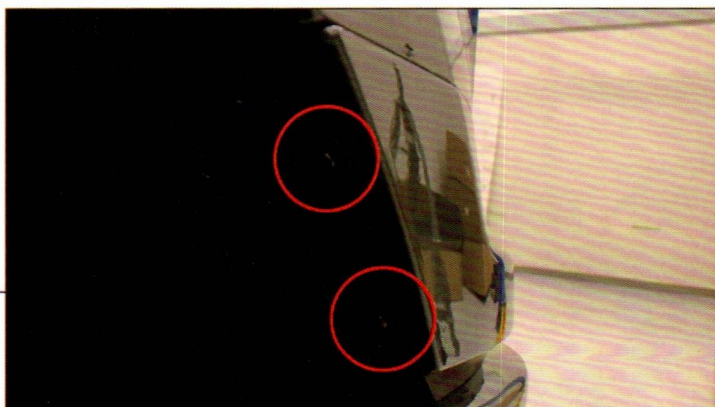
Remove (4) 10mm bolts from the top of the grille.



---

**STEP 3**

Unplug the (2) electrical connectors from the top of the grille by pushing in the plastic tab on each connector.



---

**STEP 4**

Remove (2) 7mm bolts from inside the fender well.

Repeat this step for the opposite side of the vehicle.

**STEP 5**



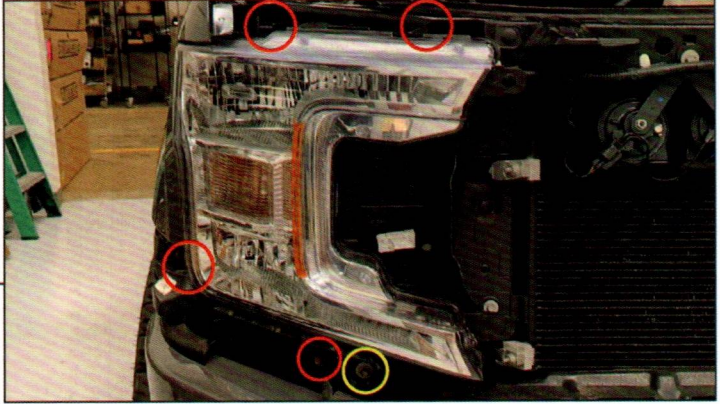
Firmly pull the trim panel away from the vehicle to dislodge the clips. Repeat this procedure to the opposite side. Remove the trim panel from the vehicle.

**STEP 6**



Remove (2) 8mm bolts from the bottom of the grille assembly. Remove the grille assembly from the vehicle.

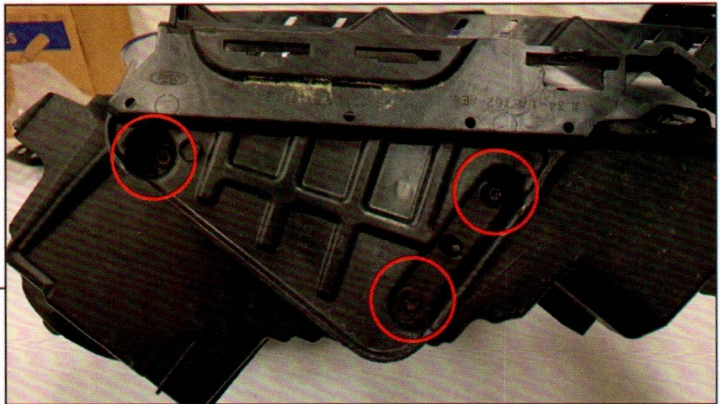
**STEP 7**



Remove (4) 10mm bolts, and (1) 8mm bolt from the headlight assembly. Remove and unplug the connectors from the headlight assembly.

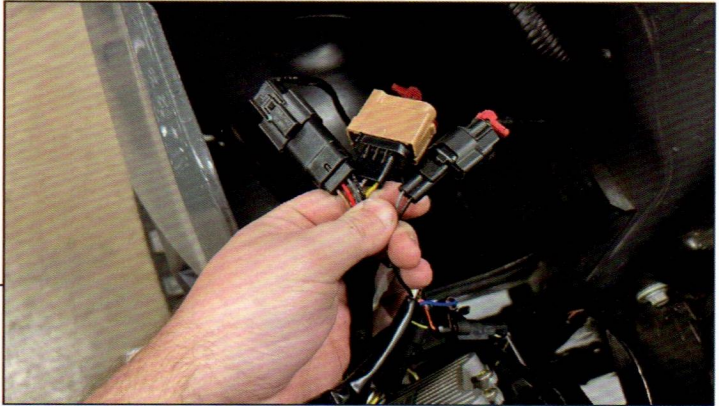
Repeat this step for the opposite side of the vehicle.

**STEP 8**



Remove the lower headlight mount from the headlight assembly by removing (3) T-25 Torx screws. Transfer the lower headlight mount to the new headlight assembly reusing the original T-25 Torx screws.

**STEP 9**



Plug the included adapter harness into the vehicle headlight harnesses. Plug the adapter harness & resistor harness into the headlight assembly.

Repeat this step for the opposite side of the vehicle.

**STEP 10**



Fit the headlight assembly into the vehicle, and secure the headlight using the OEM headlight mounting hardware.

Repeat this step for the opposite side of the vehicle.



---

**STEP 11**

Install all vehicle body panels and covers following steps 1-7 in reverse order.

Installation is now complete.