



SPARE TIRE CARRIER

UNIVERSAL FIT ALL TRUCK BED

(Fit Spare Tire Up to 40" Diameter and 13.5" Width)

INSTALLATION INSTRUCTIONS

CONTENTS

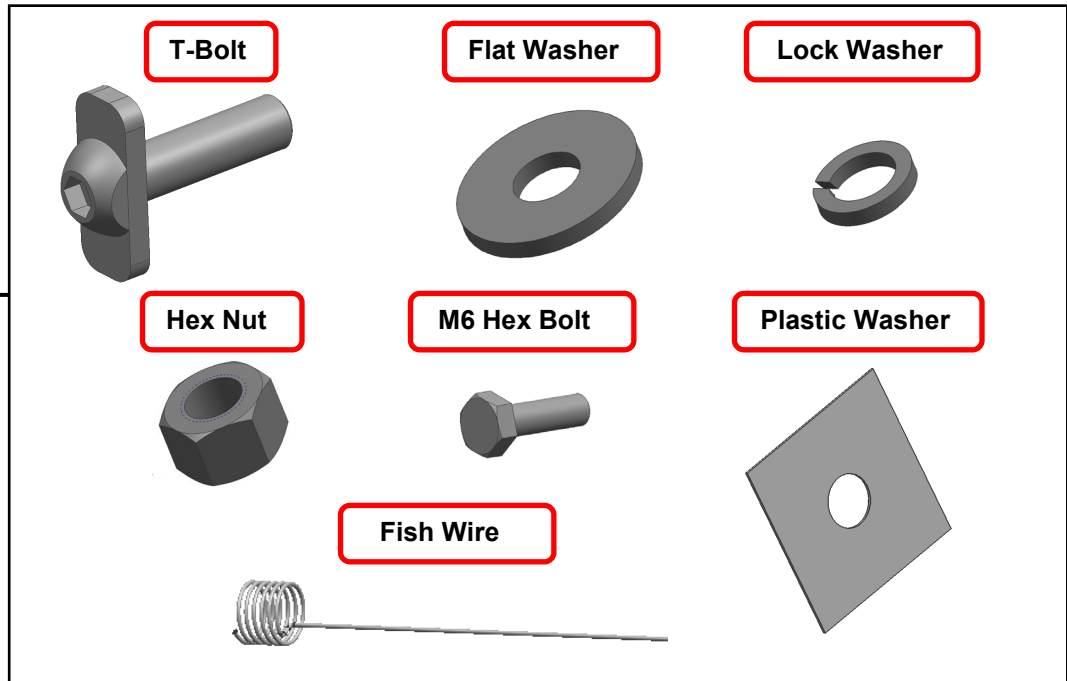
- (1) Spare Tire Carrier
- (4) M12 x 45mm T-Bolts
- (4) M12 x 32mm OD x 3mm Flat Washers
- (4) M12 Lock Washers
- (4) M12 Hex Nuts
- (8) 12mm Plastic Washers
- (4) M12 Fish Wires
- (2) M6 x 20mm Hex Bolts
- (1) Y-Strap

TOOLS REQUIRED

- 10mm/18mm/19mm
Wrench/Socket
- Ratchet

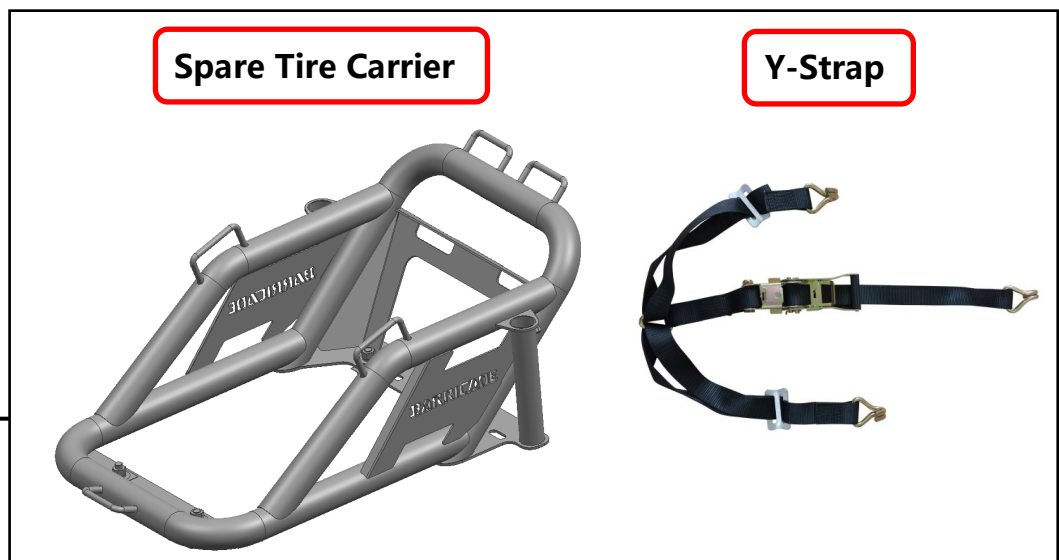
SKU # U19056-AT
Edited: 03/24/2025

STEP 1



Please identify various mounting hardware from the image above.

STEP 2



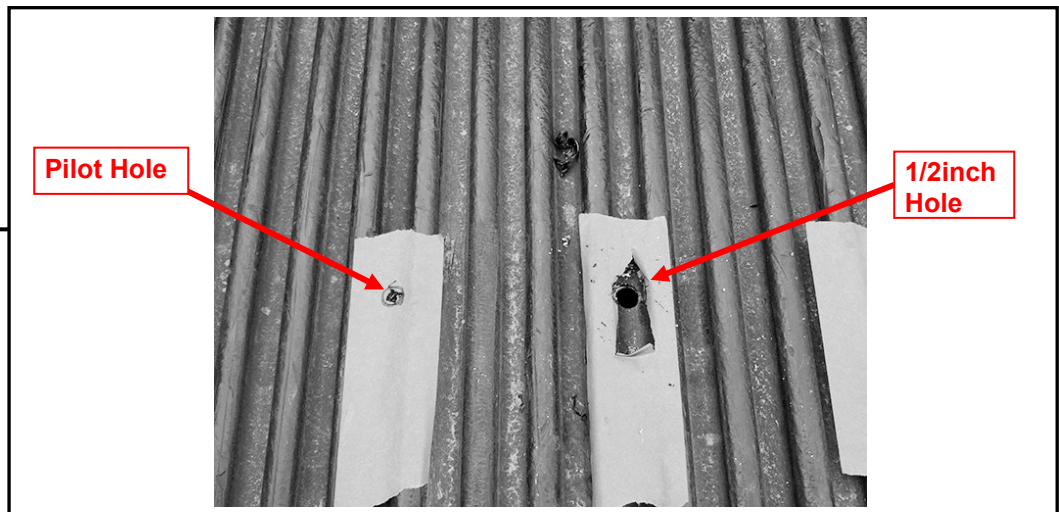
Identify the Spare Tire Carrier and Y Shape Strap above.

STEP 3



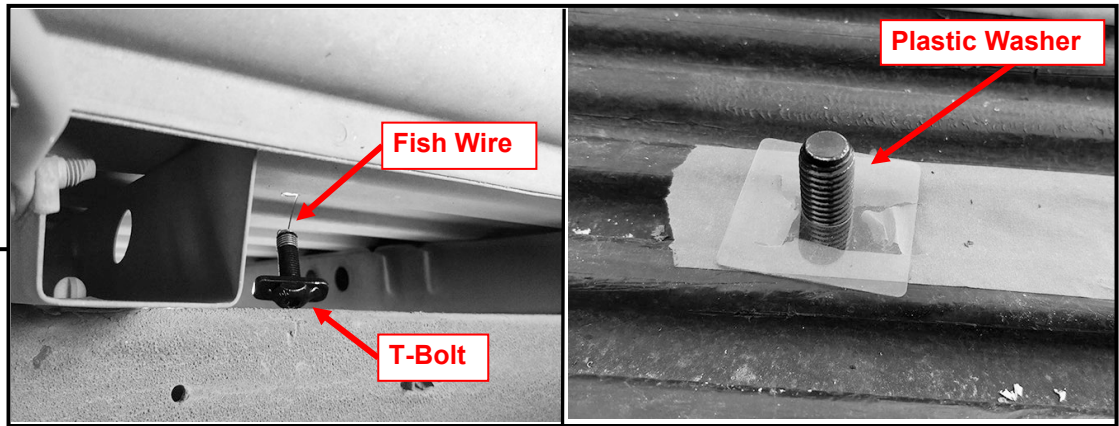
****Before drilling any mounting holes, check underneath the bed to avoid drilling through gas lines or other important fixtures under the bed.** Place the Tire Carrier onto the bed floor in the desired location. Place tape underneath the desired slots and mark the slots for drilling. **NOTE:** For corrugated beds. Only mark drill holes in the center of highest point of the corrugation as to not bend the metal.

STEP 4



Drill a pilot hole into the marked locations, **(Left Hole Above)**. Use a 1/2inch drill bit to clear the 12mm T-Bolts, **(Right Hole Above)**.

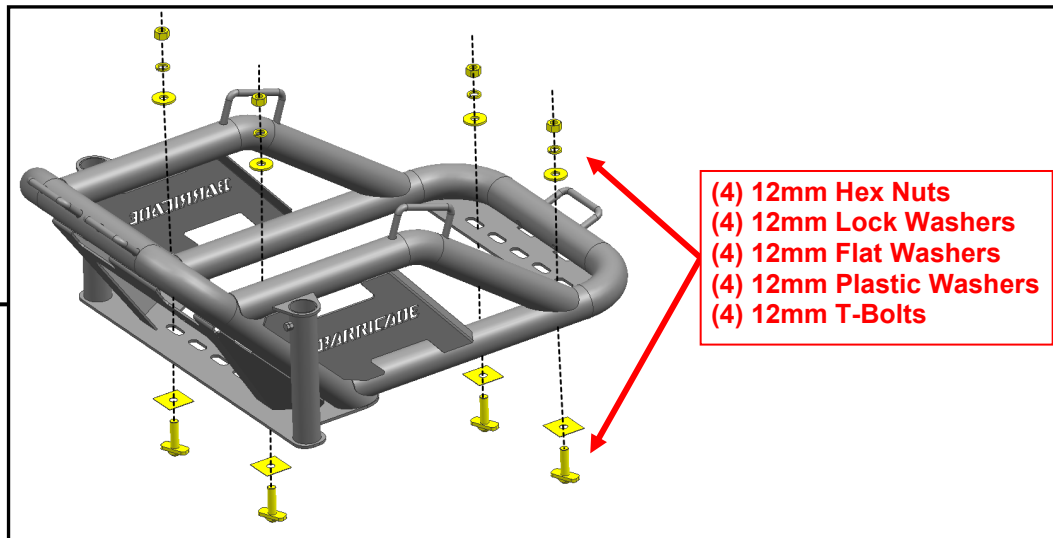
STEP 5



Select (1) 12mm T-Bolt and (1) 12mm Fish Wire. Thread the Fish Wire onto the T-Bolt, slide the end of the Fish Wire into the drilled-out hole from the bottom of the bed, **(Left Image Above)**. Guide the T-Bolt into the newly drilled hole, Remove the fish wire and thread (1) 12mm Plastic Washer onto the T-Bolt to hold it in place, **(Right Image Above)**.

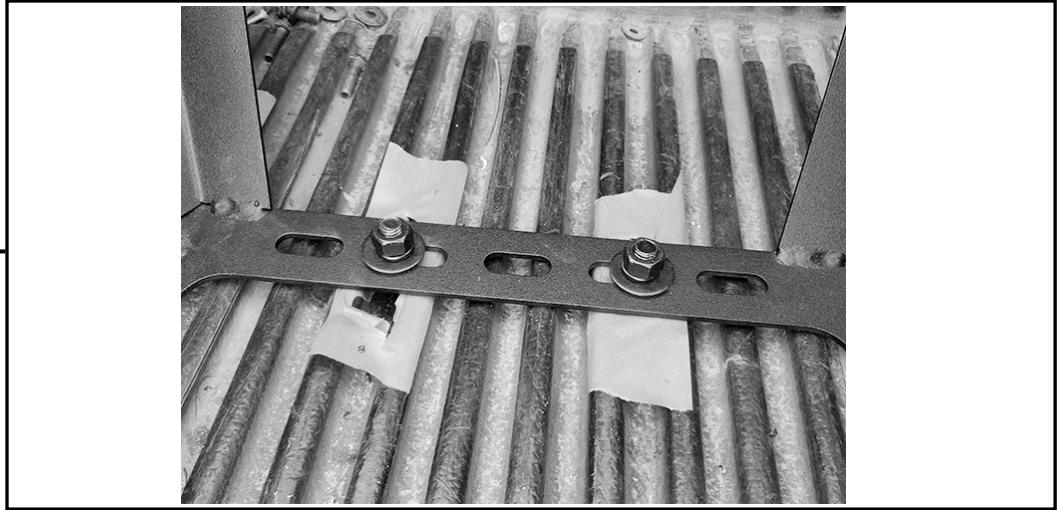
IMPORTANT: For aluminum vehicle bodies, it is necessary to thread another (1) 12mm Plastic Washer onto the 12mm T-Bolts before being inserted into the bed to prevent corrosion. Repeat this Step for the remaining (3) 12mm T-Bolts.

STEP 6



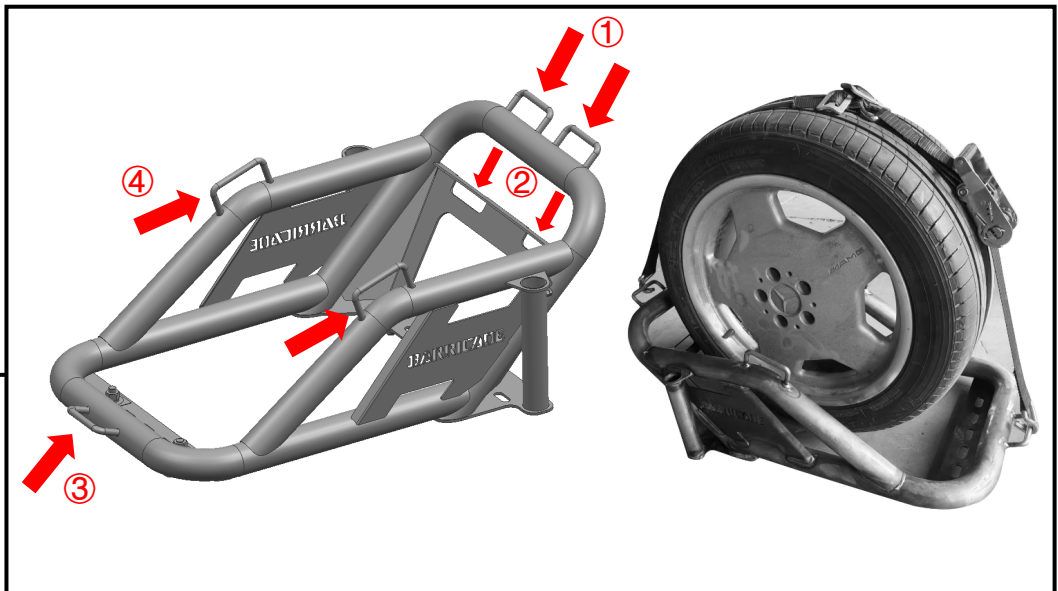
Place the Spare Tire Carrier onto the (4) T-Bolts and secure with (4) 12mm Flat Washers, (4) 12mm Lock Washers and (4) 12mm Hex Nuts. Do not tighten hardware.

STEP 7

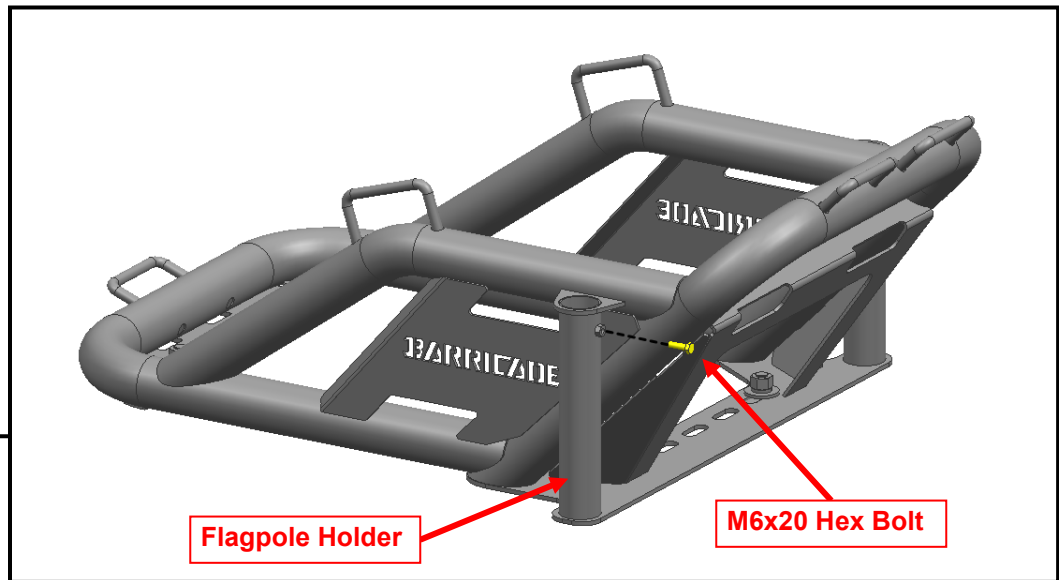


Adjust and level the Spare Tired Carrier, then fully tighten all hardware.

STEP 8



Place the tire into the Spare Tire Carrier. Use the Y-Strap to secure spare tire on the Carrier. Determine the locations (**No. ①③ or No. ②③**) to attach the strap hooks. Once the Y-Strap hooks mounting on place, pull the ratchet to tighten the spare tire on the carrier. For a more secure fit, use the side hoops (**No. ④**) on the Tire Carrier to add more strap down the tire cross ways.



STEP 9

The Tire Carrier include two Flagpole Holders on both side. The holder can fit for flagpoles with tube diameter up to 1.35 inches. Once the flagpoles insert to the holder, secure the flagpoles with (1) M6 x 20mm Hex Bolt each side.

Installation is now complete.